

NYSDOT Functional Classification Change Request Form

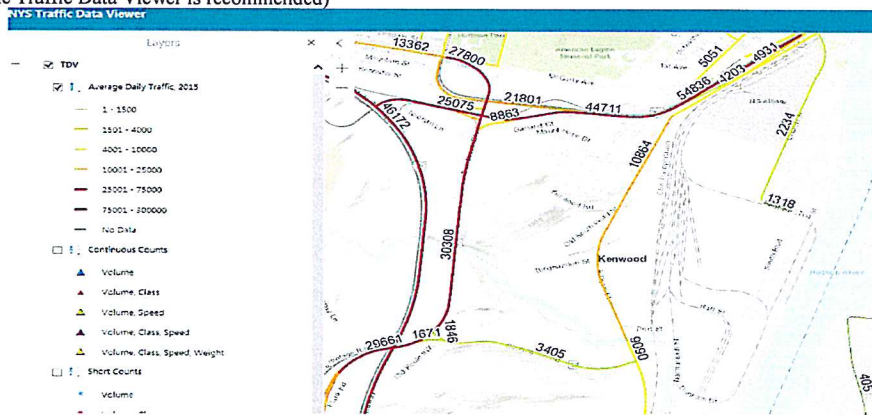
Date Request Initiated	Region 1	County Albany	DOTID 276905
Roadway Name (Include RT#/CR#)	Smith Blvd		
Municipality(s)	City of Albany		
Begin Description	Boat St	End Description	Raft St
Total Miles to be Re-classified	.43	Current Classification	19 Urban Local
Begin Point	0	End Point	0.43
Proposed Classification	17 Urban Major Collector		
Proposed or Existing Route (Specify)	Existing		Proposed NHS (YES or NO) (Specify)
NO			

Reason for Change in Classification (Justification)

CDTC staff recommends changing the functional class of South Port St, for the following reasons:

1. The importance of freight and goods movement are identified as key principles in CDTC's New Visions 2040 Plan. The roadways, by providing access to the Port of Albany, serve an important function vital to the region's economy.
2. The re-classification would be consistent with functional classifications on eastern shore of the Hudson River/ City of Rensselaer side of the Port, where all of the roadways are currently classified as Urban Major Collectors.
3. The roadways provide a connection to the NHS Intermodal Connector (Church St) and the greater NHS/Interstate System.
4. The connections of the roadways through the Port of Albany provide for a system of continuity by allowing continuous access to, from, and through port via the arterial and interstate roadway networks. The system of continuity is achieved by providing connections to the greater transportation network via the Urban Major Collectors currently serving the Port of Albany.
5. The Port of Albany and their tenants are served by a network of roadways that connect from the south and north. The north side of the Port is accessed via Church St, with the functional classification of Urban Major Collector and designated as a National Highway System (NHS) Intermodal Connector; and Boat St/South Seventh St, also with a functional classification of Urban Major Collector. Access to the Port from the south side, and through the Port, is achieved through a network of local streets including Smith Blvd, Raft St, Normanskill St, and South Port St, accessed via S. Pearl St./NY 32. All of the roadways are 1 lane in each direction. Total pavement width varies between approximately 24' and 30'. There are eleven (11) rail crossings along the roadways; one (1) CSX main line crossing, and ten (10) are minor in nature, serving the tenants of the Port. There is one (1) pedestrian facility, a crosswalk, on Smith Blvd from the Albany Port District Commission building to the Port of Albany. The crosswalk is the only pavement marking along the subject roadways. There are no bicycle facilities. Stormwater is collected via a closed drainage system.

AADT of Facility and parallel/connecting facilities (Screen shot from the Traffic Data Viewer is recommended)



Next Steps for the Region:

1. Collect local/MPO concurrences and supporting documentation for change requests
2. Email PDF files to

- NYSDOT Functional Classification Change contact Michael Fay: Michael.Fay@dot.ny.gov

The NYSDOT contact should also receive a copy of the map (paper or electronic) showing the classification change and traffic counts)

NYSDOT Functional Classification Change Request Form

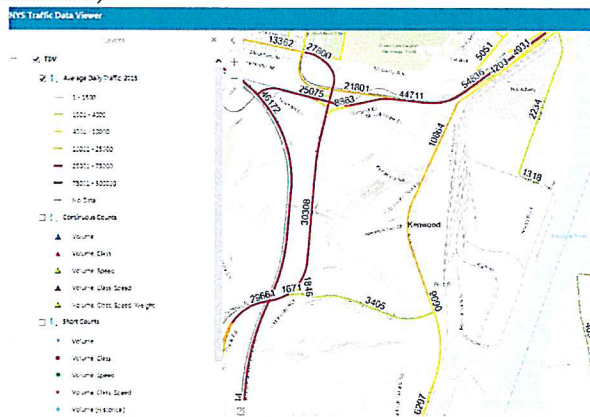
Date Request Initiated	Region 1	County Albany	DOTID 276906
Roadway Name (Include RT#/CR#) Raft St		Municipality(s) City of Albany	
Begin Description NORMANSKILL ST		End Description SMITH BLVD	
Total Miles to be Re-classified .19		Current Classification 19 Urban Local	
Begin Point 0	End Point .19	Proposed Classification 17 Urban Major Collector	
Proposed or Existing Route Existing (Specify)		Proposed NHS (YES or NO) NO (Specify)	

Reason for Change in Classification (Justification)

CDTC staff recommends changing the functional class of South Port St, for the following reasons:

1. The importance of freight and goods movement are identified as key principles in CDTC's New Visions 2040 Plan. The roadways, by providing access to the Port of Albany, serve an important function vital to the region's economy.
2. The re-classification would be consistent with functional classifications on eastern shore of the Hudson River/ City of Rensselaer side of the Port, where all of the roadways are currently classified as Urban Major Collectors.
3. The roadways provide a connection to the NHS Intermodal Connector (Church St) and the greater NHS/Interstate System.
4. The connections of the roadways through the Port of Albany provide for a system of continuity by allowing continuous access to, from, and through port via the arterial and interstate roadway networks. The system of continuity is achieved by proving connections to the greater transportation network via the Urban Major Collectors currently serving the Port of Albany.
5. The Port of Albany and their tenants are served by a network of roadways that connect from the south and north. The north side of the Port is accessed via Church St, with the functional classification of Urban Major Collector and designated as a National Highway System (NHS) Intermodal Connector; and Boat St/South Seventh St, also with a functional classification of Urban Major Collector. Access to the Port from the south side, and through the Port, is achieved through a network of local streets including Smith Blvd, Raft St, Normanskill St, and South Port St, accessed via S. Pearl St./NY 32. All of the roadways are 1 lane in each direction. Total pavement width varies between approximately 24' and 30'. There are eleven (11) rail crossings along the roadways; one (1) CSX main line crossing, and ten (10) are minor in nature, serving the tenants of the Port. There is one (1) pedestrian facility, a crosswalk, on Smith Blvd from the Albany Port District Commission building to the Port of Albany. The crosswalk is the only pavement marking along the subject roadways. There are no bicycle facilities. Stormwater is collected via a closed drainage system.

AADT of Facility and parallel/connecting facilities (Screen shot from the Traffic Data Viewer is recommended)



Next Steps for the Region:

1. Collect local/MPO concurrences and supporting documentation for change requests
2. Email PDF files to
 - NYSDOT Functional Classification Change contact Michael Fay: Michael.Fay@dot.ny.gov

The NYSDOT contact should also receive a copy of the map (paper or electronic) showing the classification change and traffic counts)

NYSDOT Functional Classification Change Request Form

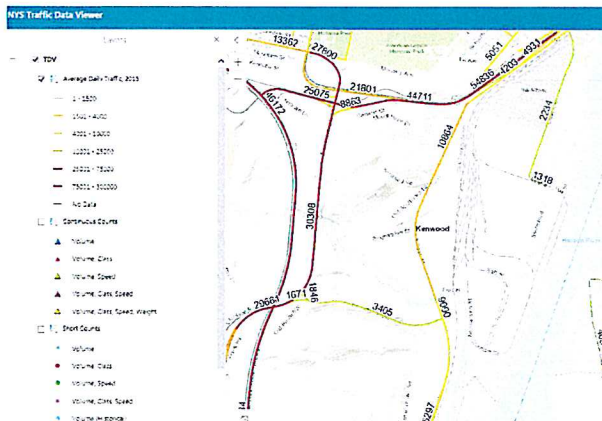
Date Request Initiated	Region 1	County Albany	DOTID 276907
Roadway Name (Include RT#/CR#) Normanskill St		Municipality(s) City of Albany	
Begin Description SO PORT ST		End Description RAFT ST	
Total Miles to be Re-classified 0.11		Current Classification 19 Urban Local	
Begin Point 0	End Point 0.11	Proposed Classification 17 Urban Major Coll	
Proposed or Existing Route Existing (Specify)		Proposed NHS (YES or NO) NO (Specify)	

Reason for Change in Classification (Justification)

CDTC staff recommends changing the functional class of South Port St, for the following reasons:

1. The importance of freight and goods movement are identified as key principles in CDTC's New Visions 2040 Plan. The roadways, by providing access to the Port of Albany, serve an important function vital to the region's economy.
2. The re-classification would be consistent with functional classifications on eastern shore of the Hudson River/ City of Rensselaer side of the Port, where all of the roadways are currently classified as Urban Major Collectors.
3. The roadways provide a connection to the NHS Intermodal Connector (Church St) and the greater NHS/Interstate System.
4. The connections of the roadways through the Port of Albany provide for a system of continuity by allowing continuous access to, from, and through port via the arterial and interstate roadway networks. The system of continuity is achieved by proving connections to the greater transportation network via the Urban Major Collectors currently serving the Port of Albany.
5. The Port of Albany and their tenants are served by a network of roadways that connect from the south and north. The north side of the Port is accessed via Church St, with the functional classification of Urban Major Collector and designated as a National Highway System (NHS) Intermodal Connector; and Boat St/South Seventh St, also with a functional classification of Urban Major Collector. Access to the Port from the south side, and through the Port, is achieved through a network of local streets including Smith Blvd, Raft St, Normanskill St, and South Port St, accessed via S. Pearl St./NY 32. All of the roadways are 1 lane in each direction. Total pavement width varies between approximately 24' and 30'. There are eleven (11) rail crossings along the roadways; one (1) CSX main line crossing, and ten (10) are minor in nature, serving the tenants of the Port. There is one (1) pedestrian facility, a crosswalk, on Smith Blvd from the Albany Port District Commission building to the Port of Albany. The crosswalk is the only pavement marking along the subject roadways. There are no bicycle facilities. Stormwater is collected via a closed drainage system.

AADT of Facility and parallel/connecting facilities (Screen shot from the Traffic Data Viewer is recommended)



Next Steps for the Region:

1. Collect local/MPO concurrences and supporting documentation for change requests
2. Email PDF files to

- NYSDOT Functional Classification Change contact Michael Fay: Michael.Fay@dot.ny.gov

The NYSDOT contact should also receive a copy of the map (paper or electronic) showing the classification change and traffic counts)

NYSDOT Functional Classification Change Request Form

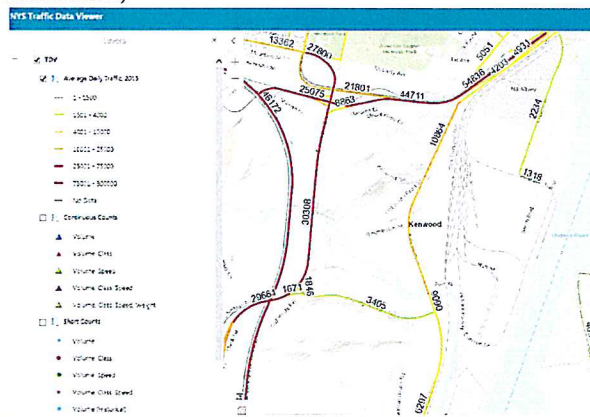
Date Request Initiated	Region 1	County Albany	DOTID 276908
Roadway Name (Include RT#/CR#) S Port St (Port Rd)		Municipality(s) City of Albany	
Begin Description NY32 S PEARL ST		End Description NORMANSKILL ST	
Total Miles to be Re-classified 0.16		Current Classification 19 Urban Local	
Begin Point 0 End Point .16		Proposed Classification 17 Urban Major Collector	
Proposed or Existing Route Existing (Specify)		Proposed NHS (YES or NO) NO (Specify)	

Reason for Change in Classification (Justification)

CDTC staff recommends changing the functional class of South Port St, for the following reasons:

1. The importance of freight and goods movement are identified as key principles in CDTC's New Visions 2040 Plan. The roadways, by providing access to the Port of Albany, serve an important function vital to the region's economy.
2. The re-classification would be consistent with functional classifications on eastern shore of the Hudson River/ City of Rensselaer side of the Port, where all of the roadways are currently classified as Urban Major Collectors.
3. The roadways provide a connection to the NHS Intermodal Connector (Church St) and the greater NHS/Interstate System.
4. The connections of the roadways through the Port of Albany provide for a system of continuity by allowing continuous access to, from, and through port via the arterial and interstate roadway networks. The system of continuity is achieved by proving connections to the greater transportation network via the Urban Major Collectors currently serving the Port of Albany.
5. The Port of Albany and their tenants are served by a network of roadways that connect from the south and north. The north side of the Port is accessed via Church St, with the functional classification of Urban Major Collector and designated as a National Highway System (NHS) Intermodal Connector; and Boat St/South Seventh St, also with a functional classification of Urban Major Collector. Access to the Port from the south side, and through the Port, is achieved through a network of local streets including Smith Blvd, Raft St, Normanskill St, and South Port St, accessed via S. Pearl St./NY 32. All of the roadways are 1 lane in each direction. Total pavement width varies between approximately 24' and 30'. There are eleven (11) rail crossings along the roadways; one (1) CSX main line crossing, and ten (10) are minor in nature, serving the tenants of the Port. There is one (1) pedestrian facility, a crosswalk, on Smith Blvd from the Albany Port District Commission building to the Port of Albany. The crosswalk is the only pavement marking along the subject roadways. There are no bicycle facilities. Stormwater is collected via a closed drainage system.

AADT of Facility and parallel/connecting facilities (Screen shot from the Traffic Data Viewer is recommended)



Next Steps for the Region:

1. Collect local/MPO concurrences and supporting documentation for change requests
2. Email PDF files to

- NYSDOT Functional Classification Change contact Michael Fay: Michael.Fay@dot.ny.gov

The NYSDOT contact should also receive a copy of the map (paper or electronic) showing the classification change and traffic counts)