

COMMUNITY PLANNER FORUM

Date: March 16, 2023

Start Time: 9:30 AM

End Time: 10:30 AM

Facilitator: Jen Ceponis

Study/Project/Task: 1.75: Linkage Admin

Attendance

Name & Organization/Agency

Audrey Burneson, NYSDOT Region 1
Planning Unit
Catherine Lawson, UAlbany
Chris Bauer, CDTC
Jen Ceponis, CDTC
Teresa LaSalle, CDTC
Stephen Maples, CDTC
Rima Shamieh, CDTC
Liz Kormos, Village of Ballston Spa
Meg Grenier, Village of Menands
Todd Fabozzi, CDRPC
Austin Erickson, Schenectady
Lauren Axford, Town of Bethlehem

Rob Leslie, Town of Bethlehem
Anna Feltham, Town of East Greenbush
Corneil Smith, Town of East Greenbush
Susan Barden, Saratoga Springs
Kim Lambert, Saratoga County
Rebecca O'Dell, CDTC
Ryan Riper, Town of Wilton
Floria Huizinga, Town of Malta
Mark Castiglione, CDRPC
Kathleen Bell, EPA Region 2
Linda von der Heide, Rensselaer County

Agenda Items:

1. Welcome and Introductions

Not streaming live today. Meeting is being recorded and will be posted on YouTube.

2. Land Use Hot Topic: Learning from Bethlehem's Farms & Forests Conservation Program, Rob Leslie and Lauren Axford

The presentation focused on the Town's tools for open space conservation.

Conservation Easement Exemption Program – not common in New York State because it requires state legislative action. The owner foregoes development in exchange for a reduced assessed value. The reduction depends on how long the easement is in place. A challenge is getting all the taxing jurisdictions to agree to reduce the tax reduction.

Parkland Set Aside Fund – All municipalities can do this. Bethlehem imposes a fee on new residential development, then uses the money to fund parkland purchases, studies, and improvements.

Farms and Forests Fund – This fund was created to purchase land and agricultural easements, to leverage state and federal programming, and to help pay for transaction costs such as land surveys. Funded through earmarks in the Town’s capital reserve fund end of year surplus.

U.S. Census Updates

a. Urban Area Boundaries

Updates were released in December, 2022. Our boundaries have shifted in places. Irregularly shaped boundaries can lead to issues with road segment functional classifications where roads switch between an urban and a rural status many times along their length. Roadway functional classification can affect federal aid funding eligibility.

b. 2020 Census Results status (CDRPC)

Still waiting for the data release we need to do population projections. Capital Region Indicators website has been updated with ACS 5-year data 2017-2021. We now have 15 years of building permit data on the CDRPC website (most recent year is 2021).

Demographic multipliers by housing type have also been updated. This is a model that estimates the number of children that live in each housing type. Updated consumer price indices on website. Indices began to fall in 2022, good news.

3. CDRPC Planning Updates

a. Climate Smart Communities Program Updates

Clean Energy Community Program and Climate Smart Community Program. Reach out to Todd Fabozzi if you’re interested in learning more about the programs or in Government Operations Inventories, Climate Action Plans, Community Energy Inventories, Facility Energy Usage documentation, Resilience Plans, and more. CDRPC applied for an EPA grant to develop Climate Action Plan for the region and work with stakeholders to work towards reducing their carbon footprint and implementing strategies for reduction.

b. Other

We will be issuing a Broadband Buildout Analysis RFP to identify where infrastructure upgrades would have the greatest impact.

A NOFA was issued for funding opportunities for public works, targeting areas of distress. We will share additional information with communities through email.

Working on an analysis of regional communities to determine level of existing compliance with the Governor’s proposed [New York State Housing Compact](#).

4. CDTC Planning Updates

a. 2023-24 Unified Planning Work Program (UPWP)

Safe Streets for All regional project will be CDTC-led project

b. Complete Streets Design Guide

If you haven't received a copy or your office hasn't received a copy, please let us know

c. Equity Policy Development

CDTC has focused on equity for some time. Additionally, BIL has increased emphasis on equity. Policy will be shared with Forum once it is developed.

d. Metropolitan Transportation Plan update schedule

New Visions Virtual Learning Series is being retired, but you can still request a virtual training. The MTP is getting a major retooling. Work will begin in 2023 with an expected adoption date in 2025. Related to this, CDTC will be rebranded and renamed this year.

e. [CDTC/CDRPC Technical Assistance Program](#)

Opening in April. Reach out to techassit@CDRPC.org with ideas.

f. [Bipartisan Infrastructure Law \(BIL\)](#)

The CDTC webpage continues to be updated. Charging & Fueling Infrastructure Program – just released. PROTECT program is expected to open in Winter/ Spring 2023. Reconnecting Communities program is expected to reopen late Spring 2023. The statewide plan is underway with funding expected late Spring 2023. Safe Streets for All is expected to open in April, 2023.

[Transportation Disadvantaged Census Tracts \(Historically Disadvantaged Communities\) Map](#) – we are working on a table to summarize which map to use for which grant resource.

g. Planning Study Status

See summary table for all projects (included). Smart Mobility Toolbox is complete and includes some good peer studies. The Bus Lane Feasibility Study and the Village of Menands Linkage are both complete. Rensselaer and Troy Linkage studies, the Albany County Loop Trail Feasibility Study, the Regional Truck Parking Study, and the Albany ADA Transition Plan are all wrapping up soon.

5. Training/Workshops

a. [CDRPC Spring Webinar Series](#), every Wednesday from March 15 – May 3, 2023. Registration is free. AICP CM credits are offered for all sessions.

b. American Planning Association

i. [National Planning Conference](#), April 1-4, 2023, in Philadelphia, PA
NY Upstate Chapter is offering free registration to students.

ii. [NY Upstate APA Mini Conference](#), September 15, 2023 in Syracuse, NY.

c. [NYSAMPO Conference](#), May 9-10, 2023, in Syracuse, NY

d. NYS LTAP Center – Cornell Local Roads Program: Register for upcoming workshops: <https://nysltapclrp.regfox.com/2023-engineering-workshops>

i. ADA in the Public Right-of-Way, July 12, 2023 in Schenectady County, NY

ii. Low Volume Road Pavement Design, August 1, 2023 in Albany, NY

iii. Federal Aid 101 Virtual Workshop, September 12, 2023

e. Visit the **News & Events** Pages on both the [CDTC](#) and [CDRPC](#) websites for additional updates on training and workshops.

6. Other Regional, State and Local Planning Updates

TAP/CMAQ – Audrey Burneson of NYSDOT Region 1 Planning Unit reported that they are expecting a late spring/ early summer release, as usual

Next Meeting:

2023 Meeting Schedule: June 15; September 21; December 21



Capital Region Community Planner Forum

March 16, 2023

You know the drill!



CDTC Hybrid Meeting Guidelines

- Mute your microphone
- You can choose to use just the phone function
- You can choose to turn your camera off if you want
- Use Zoom’s chat function or “raise hand” if you have a question during the presentation
- Zoom meetings and chats (even private messages) are recorded; Zoom provides a transcript of the chat
- CDTC is live streaming the meeting to YouTube

Agenda

1. **Welcome**
2. **Featured Presentation** Land Use Hot Topic: Learning from Bethlehem's Farms & Forests Conservation Program
3. **U.S. Census Updates**
4. **CDRPC Planning Updates**
5. **CDTC Planning Updates**
6. **Training/Workshops**
7. **Other Regional, State and Local Planning Updates**
8. **2023 Meeting Schedule:** June 15, September 21, December 21





Featured Presentation

Land Use Hot Topic:
Learning from Bethlehem's
Farms & Forests
Conservation Program, Rob
Leslie

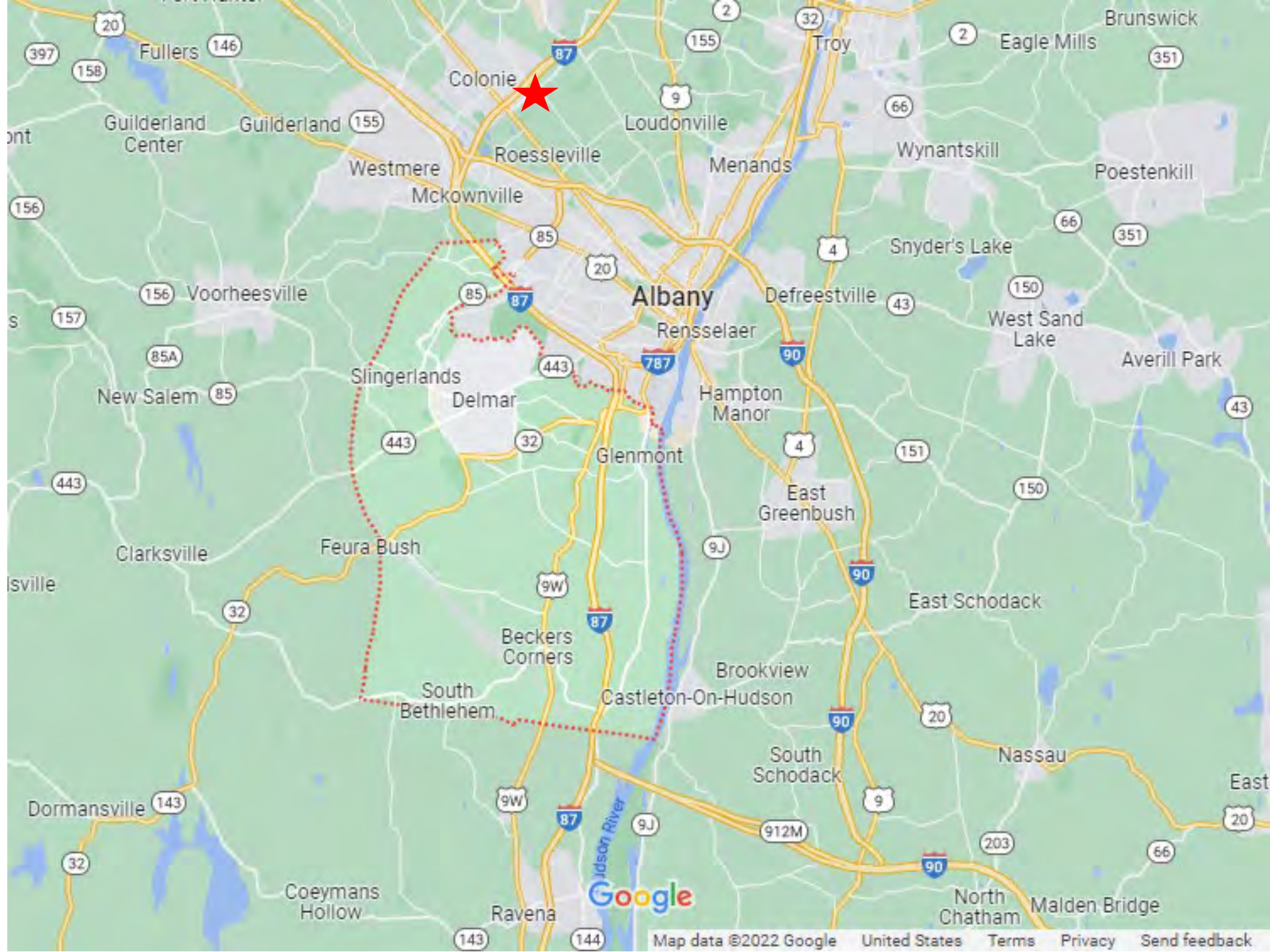


Bethlehem Farms and Forests Conservation Program

March 16, 2023



Robert Leslie, AICP
Director of Planning
Town of Bethlehem



Open Space/Farmland conservation are well supported

- Comprehensive Plan Update (2022)
- Open Space and Farmland Conservation Opinion Survey (2018)
- Open Space Plan (2017)
- Parks and Recreation Master Plan (2015)
- Recommendations on Open Space Needs and Opportunities (2009)
- Normans Kill Riparian Corridor Study (2007)



Implementation



<https://townofbethlehem.org/783/Farms-and-Forests-Conservation-Program>

Landowner options. Community benefits.



Bethlehem's
Farms and Forests
Conservation
Program



Public Education and Engagement

Bethlehem Scenic Photo Survey (2017)

Bethlehem Open Space and Farmland Opinion Survey (2018)

Hudson Kayak Eco-Tours (3/summer)

Land Conservation Stories events (2019):

“Meet the People Making Local Conservation Happen: Talks, Tastes, and a Tour”

Part One: Forests and Preserves

Part Two: Farmland

Going to where people gather:

Library, farmers markets, Five Rivers Fall Fest, Walk & Roll...



Public Education and Engagement

Bethlehem Scenic Photo Survey (2017)



Public Education and Engagement

Bethlehem Open Space and Farmland Opinion Survey (2018)

- Online survey received 1,504 responses over 2 months
- 12 multiple choice, 3 open-ended questions
- Overwhelming support for open space and farmland conservation
- Provided ideas about where, geographically, conservation is desired
- Breadth and depth of comments suggest need for continued public engagement

Open Space and Farmland Conservation Survey
www.surveymonkey.com/r/openspacesurvey
Also find the survey at: www.townofbethlehem.org, Open Space Planning page.
(Or, fill out a paper survey at Town Hall or Bethlehem Library.)

Have your phone?
Take the survey now!
Point the phone's camera at the image below and the survey link will pop up, ready for your response!



What do YOU think?
Please take our 5-minute survey online by September 30th!
Thank you for your valued input!

Questions?
Contact Bethlehem's Open Space Coordinator:
Karen Shaw: 518-439-4955 x 1106
kshaw@townofbethlehem.org
Bethlehem Town Hall
445 Delaware Avenue, Delmar, NY 12054



Public Education and Engagement

Bethlehem Open Space and Farmland Opinion Survey (2018)



Summary findings (Questions 3-13):	Rated “highly important” or “somewhat important” (combined score)
Water resource protection benefits of conservation	94%
Conservation of open space and farmland, in general	93%
Public use, parkland, trails	91%
The conservation of farmland for local food and consumables (vegetables, honey, wool, etc.)	91%
Wildlife habitat benefits	91%
Community character	91%
Support existing farmers, attract new farmers, and keep land in active farming	90%
Concerned about development as cause of loss of open space and farms	90%
Scenic views	88%
Open space for hunting and fishing	54%

Public Education and Engagement: Conservation Stories

Meet the People

Making Local Conservation Happen:
Talks, Tastes, and a Tour!

Part One: "Forests and Preserves"

Thursday, February 7th
6:00-8:00 PM

★ Stay for a Guided Crescent Moon Hike @ 8:15! ★



- ✓ Enjoy short talks by local landowners and conservation organizations about their conservation success stories;
- ✓ Warm up with hot apple cider from Indian Ladder Farms and locally grown tastings from farm-to-table chefs at "Field Notes";
- ✓ Tour the snowy trails of Five Rivers to listen for owls and gaze at the crescent moon;
- ✓ Hear stories told by the Open Space Institute, Scenic Hudson, Mohawk Hudson Land Conservancy, Poestenkill Community Forest, Pine Hollow Arboretum, local conservation landowners, and others;
- ✓ Come away with new ideas about how conservation of forests, fields, water, and wildlife can succeed locally!

Questions? www.townofbethlehem.org, 518-439-4955 x 1106
Contact Karen Shaw at kshaw@townofbethlehem.org

See you there!



Local tastes!
Hot apple
cider and
locally grown
bites by
"Field Notes"
chefs!

**All are
welcome!**

Free event!

Five Rivers
Environmental
Education Center,
56 Game Farm Road,
Delmar

★ Stay for a
**Guided Crescent
Moon Hike @
8:15!** ★

Cosponsors: Towns of Bethlehem and
New Scotland, Mohawk Hudson Land
Conservancy, Albany County, Delmar
Farmers Market, NYS Dept. of
Environmental Conservation, and
Friends of Five Rivers.

**Save the date! Part Two:
"Conserving Farmland"
Talks, Tastes, and a Tour!**
June 13th, 6-8 PM
Indian Ladder Farms!

Meet the People

Making Local Conservation Happen:
Talks, Tastes, and a Tour!

Part Two: **Conserving Farmland**

Thursday, June 13th
6:00-8:30 PM

★ Join a Guided Indian Ladder Farm Tour @ 5:00-5:45! ★



- ✓ Enjoy short talks by area farmers and farmland conservation organizations about their conservation stories

- ✓ **Farm speakers include:** Indian Ladder Farms, Laughing Earth Farm, Lovin' Mama Farm, Chaseholm Farm and Creamery, Stanton's Legacy Farm, Lansing Farm, Riverview Orchards, and Tilldale Farm

- ✓ **Sample Indian Ladder Farms Cidery and Brewery craft beverages and locally grown foods (beverages also available for purchase)**

- ✓ **Guided Indian Ladder Farm Tour before the talks @ 5:00PM (please register for the Farm Tour: education@indianladderfarms.com)**

- ✓ **Participating organizations include:** NYS Agriculture Commissioner Richard A. Ball, American Farmland Trust, New York Farm Bureau, Mohawk Hudson Land Conservancy, Cornell Cooperative Extension, Albany County Soil and Water Conservation District, Agricultural Stewardship Association, National Young Farmers Coalition, and others

- ✓ **Come away with new ideas about how the conservation of farmland can succeed locally!**



Enjoy tastes:

Farm-to-table food
and local craft
beverage samples!

**All are
welcome!**

Free event!

**Indian Ladder
Farms**

In the Apple Barn

6:00-8:30PM

★ 342 Altamont Rd
Altamont, NY

★ **Join a Guided Farm
Tour @ 5:00-5:45PM!**

Farm tour spaces limited, register at:
education@indianladderfarms.com

Cosponsors:
Towns of Bethlehem and New
Scotland, Mohawk Hudson Land
Conservancy, Albany County,
Delmar Farmers Market,
and Indian Ladder Farms.

Questions?
Contact Karen Shaw at:
kshaw@townofbethlehem.org
www.townofbethlehem.org
518-439-4955 x 1106



Town of Bethlehem Open Space Plan:

Conservation Criteria Implementation (2017)

Open Space Conservation Values Maps (natural resource inventory)

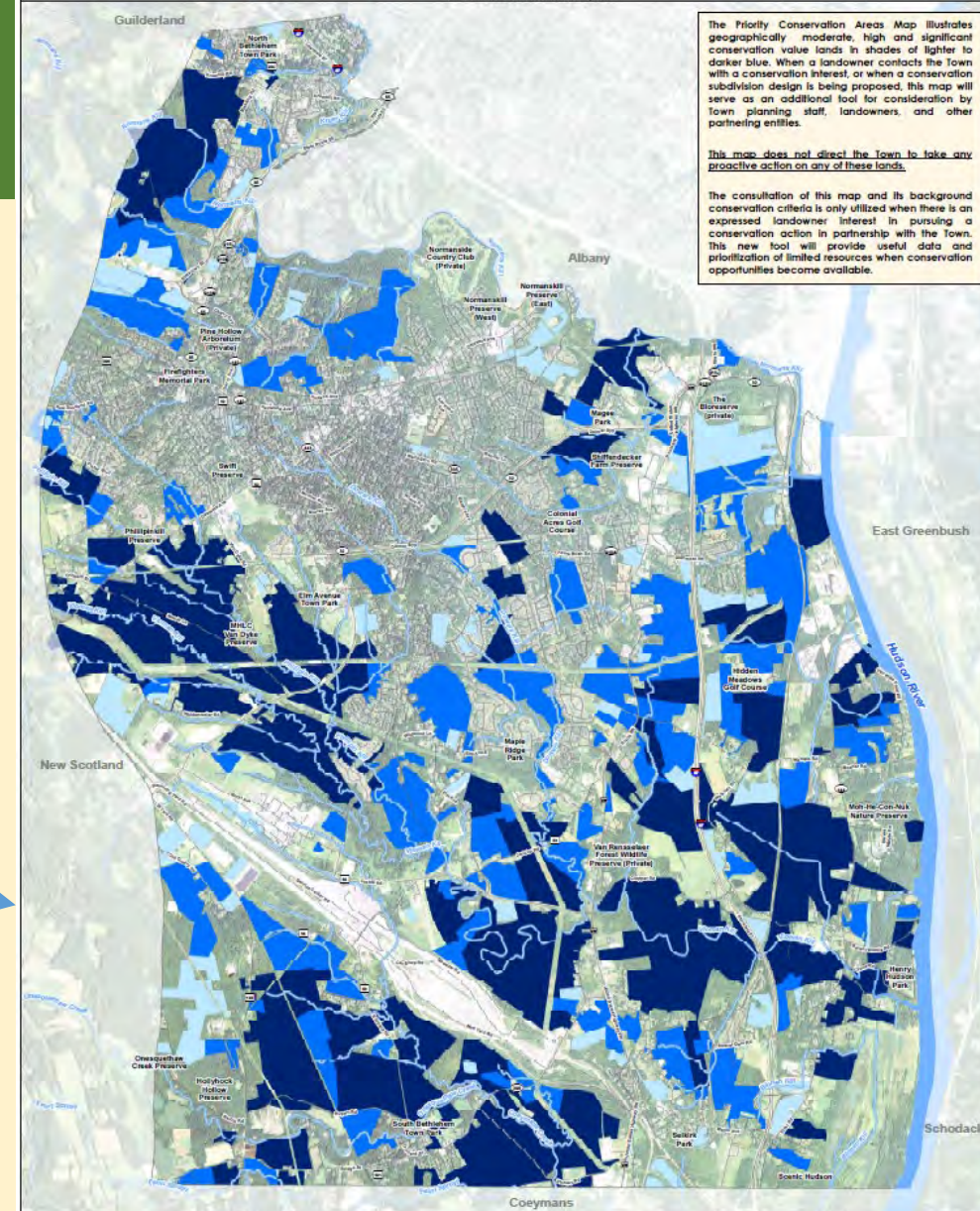
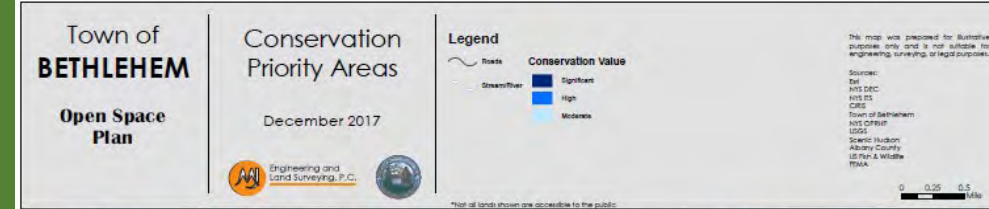
1. Community Character
2. Recreation and Greenways
3. Forests, Fields, and Wildlife Ecosystems
4. Natural Water Systems: Streams, Wetlands, and the Hudson River



Town of Bethlehem Open Space Plan:

Conservation Criteria Implementation (2017)

- Objective Conservation Criteria (25)
- Parcel conservation value: Moderate = 2-7, High = 8-11, Significant = 12-19
- Subjective criteria is also considered: historic value, scenic qualities, etc.
- GIS analysis of data generated Conservation Priority Areas



Initial Town land protection options for landowners

Term Conservation Easement Program

How it works

- 5 acres or more of open land
- Landowner forgoes development for a period they choose (15 yrs. – perpetuity)
- Landowner gets property tax break. The longer the easement period, the greater the savings (50% - 90% reduction)

Challenge

- Farmers can already get larger property tax breaks through the State agriculture exemption program

Parkland Set Aside Fund

How it works

- Revenue from a fee on new developments (new people = new parkland)
- Only for parks, park equipment, or parks planning
- \$ can be used for parkland acquisition

Challenge

- Can't be used on properties where public access won't be allowed, such as active farms and working forests

Need new funding tool to purchase agricultural easements or properties that will continue as active farms or working forests

Conservation Easement Exemption Program (CEE)

- **Term** Conservation Easement (landowner chooses, minimum of 15 years - perpetuity)
- State enabling legislation - 2014
- Bethlehem Central School District and Albany County opted in
- Two other school districts have NOT opted into program – Guilderland, RCS
- Lack of participation from RCS has caused a few applicants to withdraw
- Similar CEE programs: Town of Clifton Park, Guilderland.

Tax Exemptions received by CEE Landowners

Conservation Term (yrs.)	Tax Exemption for landowner
15 – 29	50%
30 – 49	75%
50 – 75	85%
Perpetual (forever)	90%

Conservation Easement Review Board (CERB)

- Serves as advisory body to Town Board
- Staffed by Open Space Coordinator
- Composition dictated by state law
- 5 volunteer board members with tiered 5-year terms
- At least one farmer represented
- Meet as needed (quarterly)
- CEE applications received on rolling basis



Process of CEE

- Voluntary, landowner-driven program
- No cost to landowner
- Town staff completes conservation criteria assessment (objective rating), survey work, pays filing fees, keeps it easy for the landowner
- Conservation Easement Review Board advises Town Board
- Conservation Easement Agreement
- After public hearing, Town Board approves
- Town views voluntary landowner conservation commitment as a community-wide benefit



Current CEE lands enrolled

Many inquiries over the years

Applications received that did not progress: **7**

Completed CEE participants: **6**

Salisbury Rd. – **7 acres**

Barent-Winne Rd. – **14 acres**

Bender Ln. – **11 acres**

Blessing Rd. – **41 acres**

Old Route 9W – **60 acres**

Maple Ave. – **20 acres**

Total – 153 conserved acres

All conserved in perpetuity



Bethlehem's Conservation Easement Exemption Program

March 18th, 2018



Dear Bethlehem Resident,

We are writing to let you know that environmental conservation is happening in your neighborhood!

Here is what's happening and how you can participate:

As you may have heard, Bethlehem's [Conservation Easement Exemption Program](#) is well on its way to preserving natural open spaces in our town through voluntary private landowner participation. We are delighted to report that one of your conservation-minded neighbors at 117 Barent Winne Road (see map) has committed to preserving approximately 14 acres of forested open space in our town that includes approximately 500 feet of wooded land along the Hudson River, which is part of the nationally significant Hudson River Estuary ecosystem. This property owner has agreed to keep this land out of development forever (in perpetuity), so that the land will continue to provide important wildlife habitat, as well as water quality and flood protection values to the town. In exchange for this conservation commitment, the landowner will receive a percentage reduction in their annual local taxes – helping them to save nature while saving money.

Conserving land with property tax savings: Bethlehem's Conservation Easement Exemption Program is intended to conserve open space lands, help maintain the character of the town, and provide financial incentives to those landowners willing to forego development and maintain open space. This cooperative program invites willing private landowners, with five acres or more, to protect their land for conservation purposes. The program provides a financial incentive for landowners by offering a property tax exemption of 50% to 90%, depending on the chosen conservation time commitment. Property owners applying for the exemption choose to commit to a Conservation Easement for a minimum of 15 years and up to perpetuity. The tax exemption currently applies to Town, Albany County, and Bethlehem Central school taxes.

You are invited to:

1. Attend a public hearing on Wednesday, March 28th at 6:00 PM at the Town Hall to learn more about your neighbor's conservation efforts. The Conservation Easement Exemption application in your neighborhood has been recommended by the Town's Conservation Easement Review Board for approval after this public hearing.
2. Consider applying for a Conservation Easement Exemption on your own land. If you own five acres or more of land, and are interested in how conservation can protect nature and save you tax dollars, see below for contact and application information to get you started.

Contact information: Interested landowners with five acres or more of undeveloped land in the town are encouraged to discuss land conservation opportunities with Karen Shaw, the Town's Open Space Coordinator, at 518-439-4955 x 1106, kshaw@townofbethlehem.org. Also, find our Conservation Easement Program Booklet, Frequently Asked Questions and Landowner Application on the Town's website: www.townofbethlehem.org (click on Open Space Planning tab).

Thank you! Implementing this voluntary conservation tool is a cooperative effort; thank you to all landowners who collectively help to make this environmental conservation program a success.

Thank you also to the five voluntary members of the Conservation Easement Review Board, who provide support and expertise in program administration: *Joseph Martens, Chair; Stuart Lyman; Joseph Castiglione; John Sherman, and Francis Sheehan.*

“For us, the Bethlehem Conservation Easement Exemption program was a no-brainer. We enjoy looking out our window and seeing this 11-acre forest, unencumbered by houses, street lights, driveways and cars, knowing that the land is home to countless wildlife and plant species, a pristine creek, wetlands, and tranquil solitude.

We decided to conserve our forest in perpetuity, which gave us a 90% tax exemption on this land.”

- Bethlehem CEE landowner

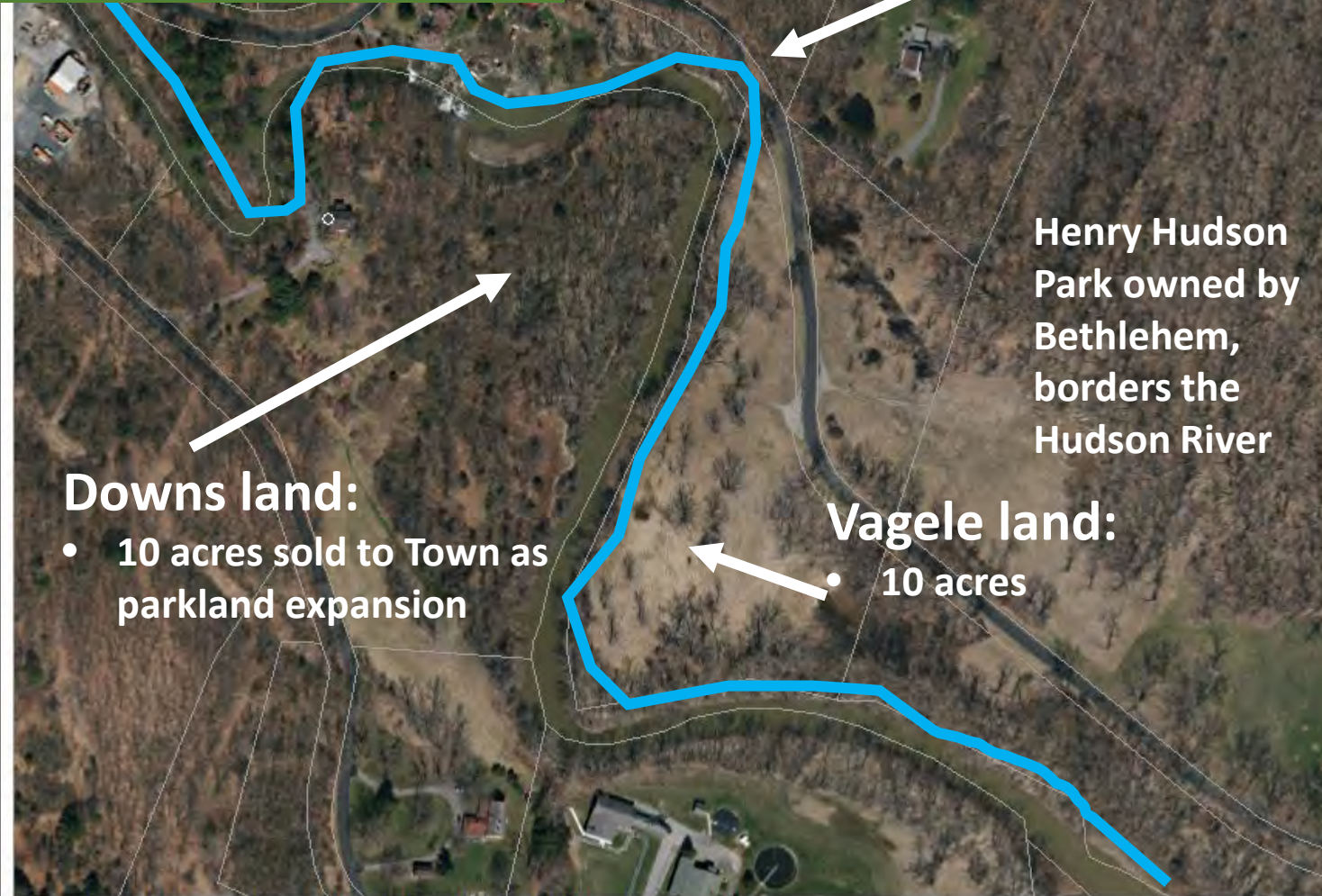


Parkland Set Aside Fund

- Established Local Law 7 for PSAF in 2001
- Idea is that more people will need more parkland
- Currently approx. \$300,000 (after \$1M pool project)
- Recent Town Board vote to update Local Law 7:
 - Increased land reservation by approx. 400 sqft/unit
 - Fees to developers rose by approx. \$500 per dwelling unit (\$2,200/SFH)
- Historically, spent \$ on improvements (85%) or studies (14%)
- Resource for parkland acquisition projects



PSAF parkland expansion project on the Vloman Kill



This product is for informational purposes and may not have been prepared for, or be suitable for legal, engineering, or surveying purposes. Use of this information should review or consult the primary data and information sources to ascertain the usability of the information.



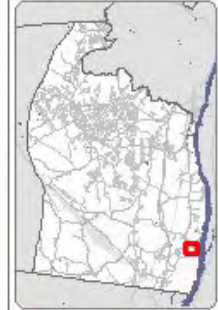
Town of Bethlehem
Dept. of Public Works
Engineering Division

445 Delaware Avenue
Delmar, New York 12054

Phone: (518) 439-4955
Fax: (518) 439-5808



General Location Map:



Map Extent

Prepared by:
arcgis2

Date:
2/21/2018



This custom maplet was generated through the Bethlehem Geographic Information System's Automated Web Map Service.

Copyright 2015.

- Will protect 1,600 feet of Vloman Kill tidal shoreline
- Partners: MHLC, SH
- Important Hudson River Estuary wildlife and fisheries habitat
- 20 acres purchased – Henry Hudson Park expansion
- Passive recreation, trails and kayaking!

PSAF parkland expansion project on the Vloman Kill



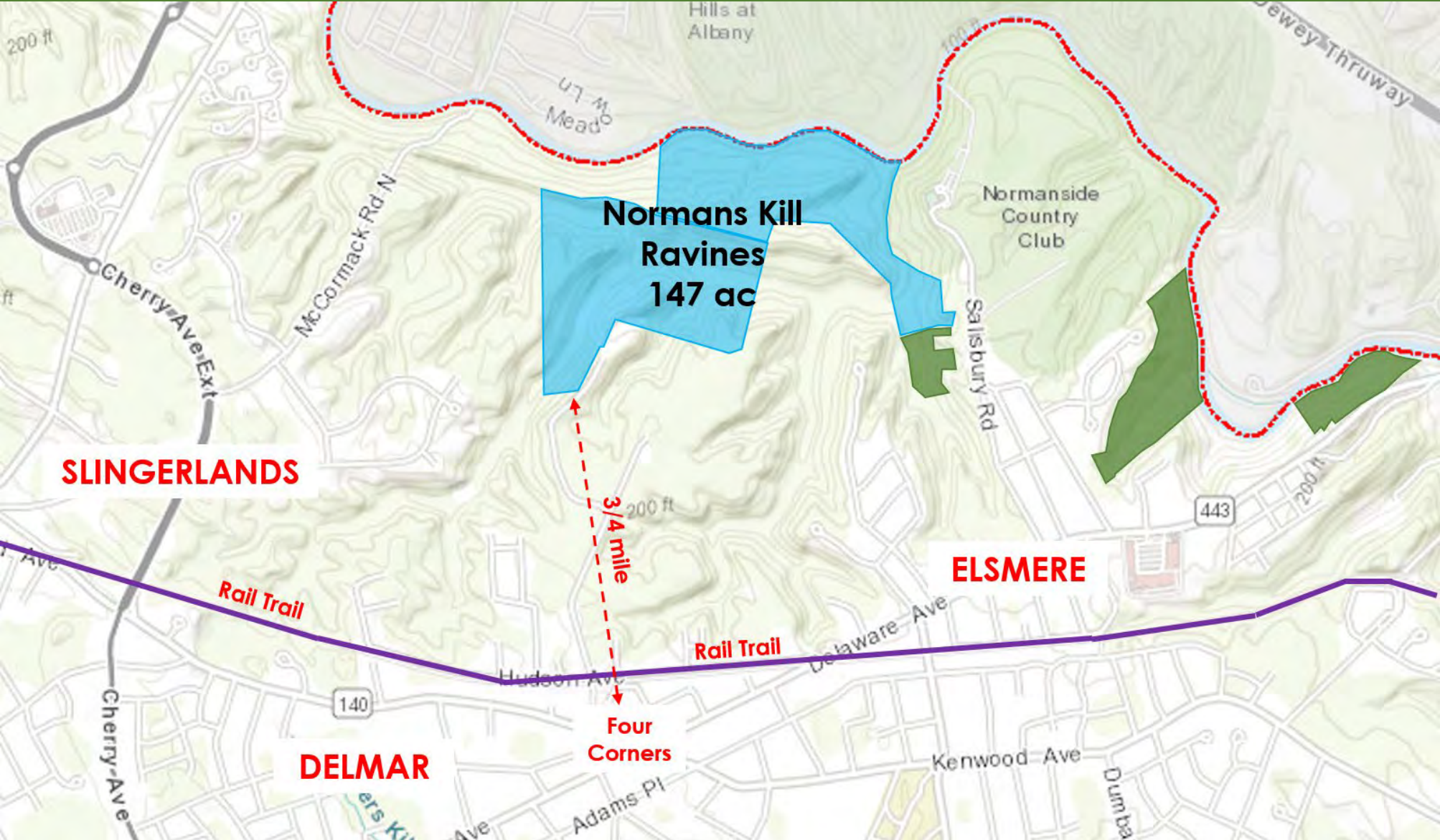
Normans Kill Ravines – A New Park for Bethlehem



- Create a new 147-acre public nature park by
 - purchasing 68.8 acres of new parkland in Elsmere, and
 - merging it with adjacent 85.7 acres of Town-owned land in Delmar
- Landscape of forests, ravines, floodplains, and more than ½ mile of Normans Kill shoreline
- Located close to businesses, neighborhoods, and the rail trail



Normans Kill Ravines – Site Map



Normanside Property has a pre-existing lease

- For decades, the 4-member Salisbury Road Deer Management Group has bow hunted for deer on the Normanside property
- July 2019, they signed a 10-year lease with the country club to continue – this lease is recorded with the deed
- Lease ONLY allows bow hunting, ONLY for deer, ONLY during the 3-month hunting season
- Town amended Chapter 79 – Hunting
“b) persons licensed to hunt who possess hunting rights established in leases on land acquired by the Town subject to those leases”



Existing Town land protection options for landowners

Term Conservation Easement Program

How it works

- Landowner forgoes development for a period they choose (15 yrs. – perpetuity)
- Landowner gets property tax break. The longer the easement period, the greater the savings (50% - 90% reduction)

Challenge

- Farmers can already get larger property tax breaks through the State agriculture exemption program

Parkland Set Aside Fund

How it works

- Revenue from a fee on new developments (new people = new parkland)
- Only for parks, park equipment, or parks planning

Challenge

- Can't be used on properties where public access won't be allowed, such as active farms and working forests

What was missing?: Needed new funding tool to purchase agricultural easements or land

Solution

Farms and Forests Fund

A new tool for helping interested landowners keep farms, forests, and fields in Bethlehem



Farms and Forests Fund



This new fund allows the Town to:

- Purchase land and agricultural easements
- community purchases the land's development value from an interested owner
 - landowner can use money to invest in farm, retire, or whatever they want
 - land is still privately owned and can continue to be farmed, but can no longer grow houses (or pavement)
- Leverage State and Federal funds
 - use as local match for grants
- Pay other transaction costs
 - land appraisals, title searches, land surveys, etc.
- Partner more effectively with MHLC, SH, others

Farms and Forests Fund: Authority



- NYS General Municipal Law 6-c and 6-g permit municipalities to establish Capital Reserve Funds for the purchase of land or rights in land (e.g., agricultural easements)
- Fund can hold or accumulate funds for land purchases at locations that have yet to be determined
- Residents may also make voluntary contributions to the fund
 - Town not allowed to ask for donations

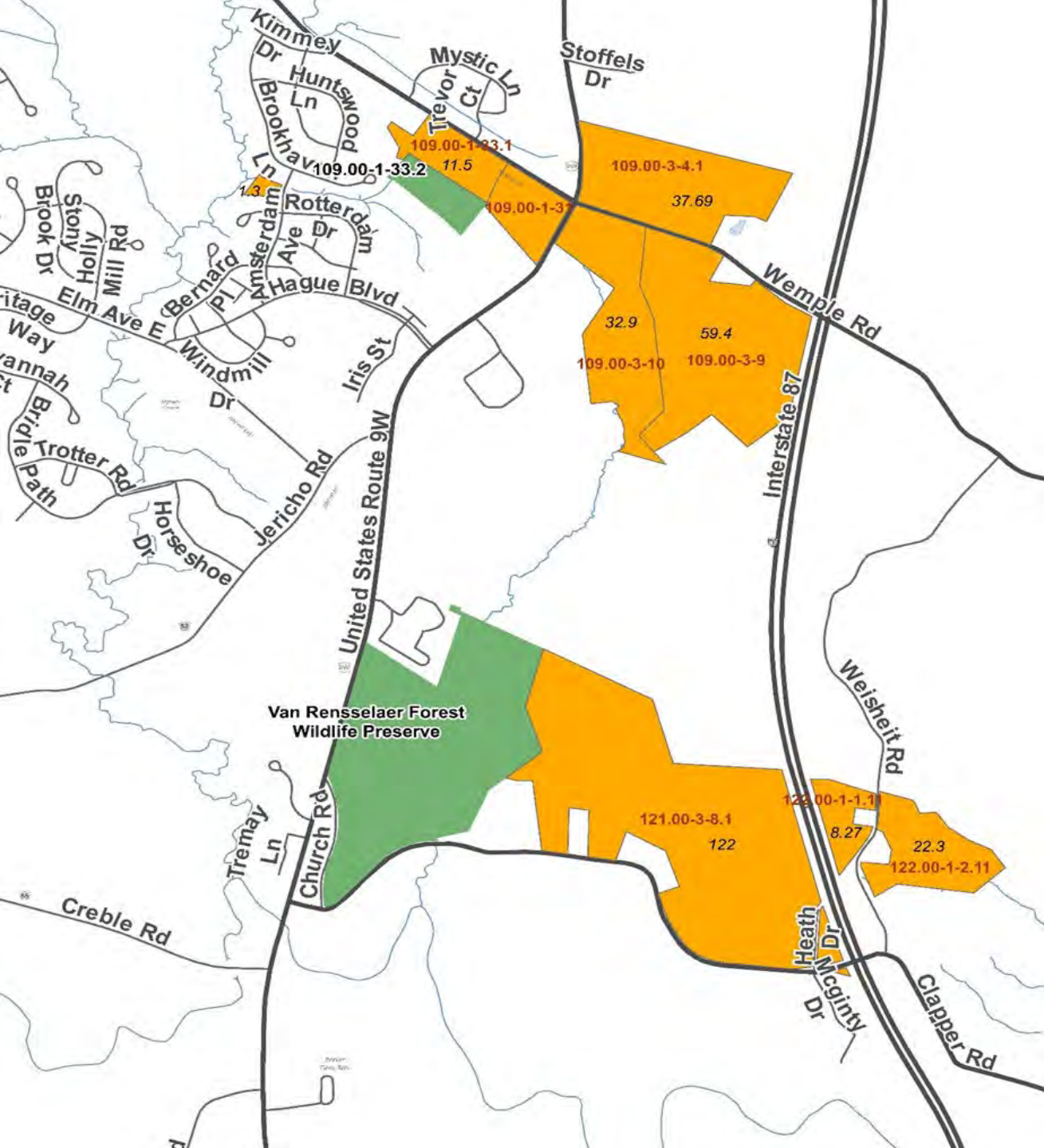
Farms and Forests Fund: Structure

Fund Balance Exceeds	Capital Reserve/ Farms & Forest Fund
20%	100/0
21%	50/50
22%	100/0
23%	50/50
24%	50/50
25%	50/50
26% +	0/100

- Primarily funded by a % of a surplus in the General Fund Operating Fund at year end
 - Triggered when year-end unassigned fund balance is in excess of 21% of budget
 - Surpluses can occur when unpredictable revenues, like sales tax/mortgage recording tax, are higher than budgeted, or when employment turnover creates unexpected savings
 - From 2014-18, fund would have grown to a balance of \$582,485
 - At end of 2021, \$2M in Farms and Forests fund
 - \$500,000 cap recently implemented

Milltowne Plaza Farmland Preservation Project





Opportunity Snap Shot:

- 9 parcels (orange)
- Total area= 306.68 acres
- 8 parcels are active farmland
- 1 parcel adjacent to Town owned 8 acre (future potential park)
- 1 parcel adjacent to significant mature forest stand (Van Rensselaer Forest Wildlife Preserve)
- Conservation Criteria Assessment scores are “Significant” & “High”
- \$4M appraisal, \$3M negotiated
- \$2M F&F Funds / \$1 other funds

Referendum on petition

Town (TWN) CHAPTER 62, ARTICLE 7

§ 91. Referendum on petition. Any such resolution or act of the town board as set forth in the preceding section shall not take effect until thirty days after its adoption; nor until approved by the affirmative vote of a majority of the qualified electors of such town or district affected, voting on such proposition, if within thirty days after its adoption there be filed with the town clerk a petition signed, and acknowledged or proved, or authenticated by electors of the town qualified to vote upon a proposition to raise and expend money, in number equal to at least five per centum of the total vote cast for governor in said town at the last general election held for the election of state officers, but which shall not be less than one hundred in a town of the first class nor less than twenty-five in a town of the second class, protesting against such act or resolution and requesting that it be submitted to the qualified electors of the town or district affected, for their approval or disapproval. If such petition be so

Proposal Number Two, A Proposition

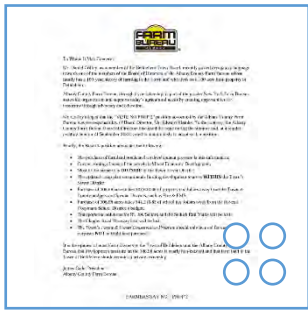
Resolution

Shall the resolution adopted by the Town Board, Town of Bethlehem on July 27, 2022 authorizing the Comptroller of the Town of Bethlehem to expend from the Farms & Forest Fund up to \$2,200,000 and to expend from the Parkland Setaside Reserve Fund up to \$200,000 to purchase 9 parcels of land located in the Town, consisting of 307 total acres, toward the total purchase of \$3,000,000, be approved?

Yes No







Source: Balance Bethlehem

Milltowne Plaza Farmland Preservation Project

- Proposition #2 on the back of the November 8, 2022 ballot
- Approved with 61% majority
- Town closed on property February 2023
- Overall conservation goal to protect the land was achieved
- Exploring options for the property

Questions/Comments

- Robert F. Leslie, AICP
Director of Planning
(518) 439-4955, Ext. 1157
rleslie@townofbethlehem.org
- Lauren Axford
Open Space Coordinator
(518) 439-4955, Ext. 1106
Laxford@townofbethlehem.org
- <https://townofbethlehem.org/783/Farms-and-Forests-Conservation-Program>

3. U.S. Census Updates

a) Urban Area Boundary (CDTC)

b) 2020 Census Results status
(CDRPC)






Census 2020

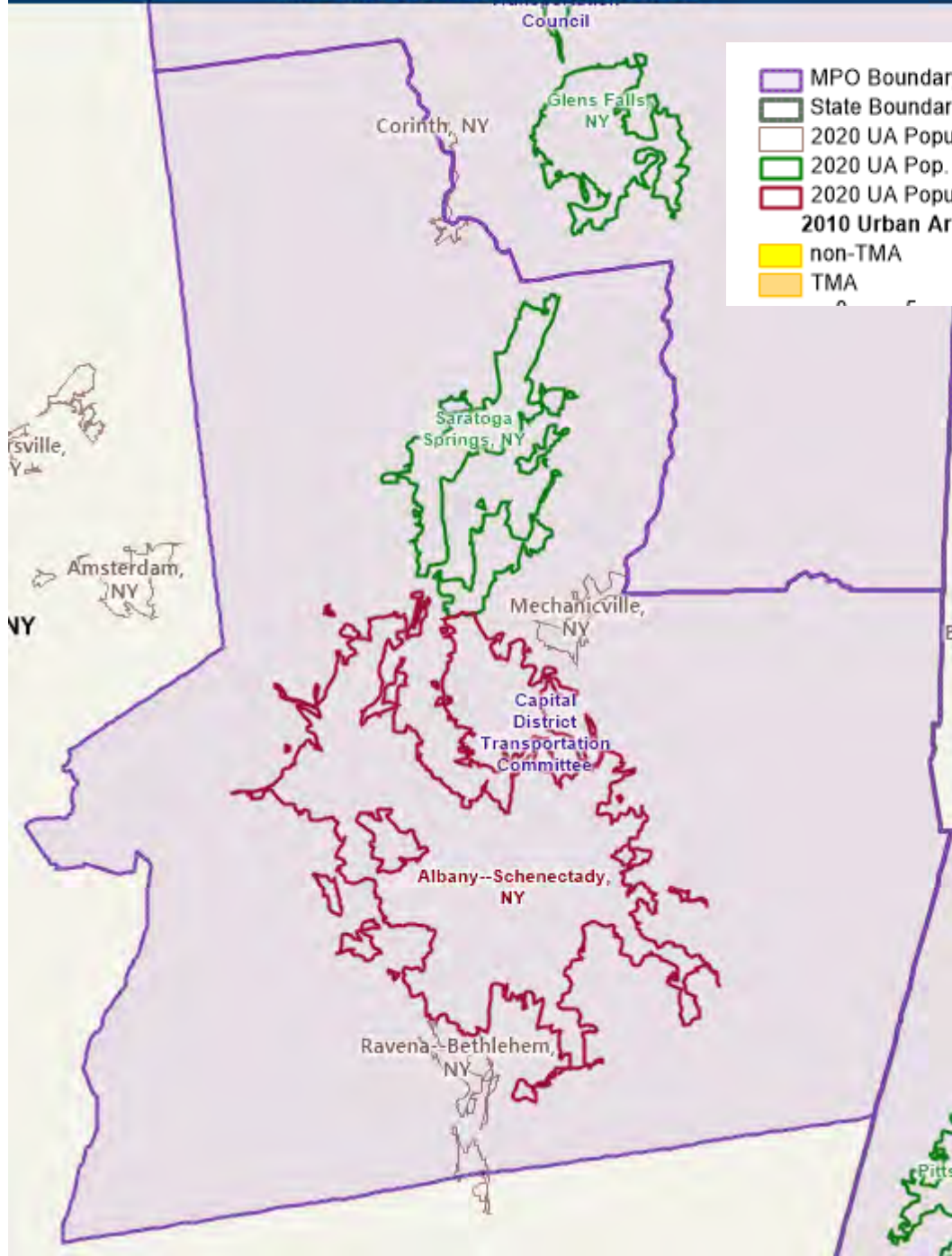
2020 Census Urban Areas Update

- The Census bureau released the official Census designated Urban Areas on 12/29/22
- Overall our population grew, with a small decline in the Albany-Schenectady UA and growth in the Saratoga Springs UA
- The 2 largest Urban Areas in our four-county region (Albany-Schenectady & Saratoga Springs) did not merge. (we thought they might merge due to the commute criteria that was used)
- There are some areas of retraction from 2010, most notably in the Town of Milton, along the Rotterdam/Glenville border, the Village of Altamont and the adjacent area, and western/southwestern Rensselaer County

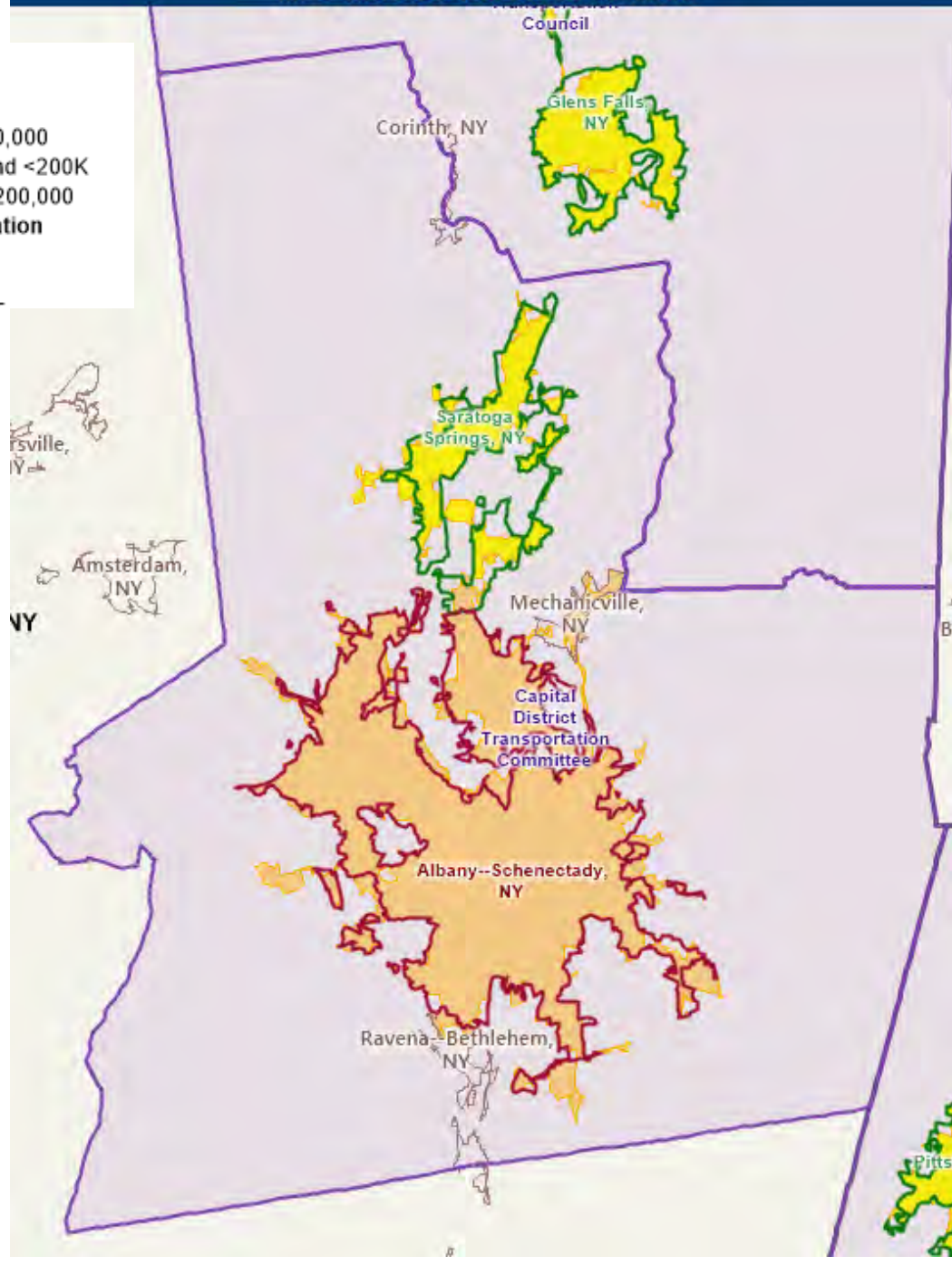
2020 Census Urban Area Population Data

Geography	2020 Population	2010 Population	Change	% Change
CDTC MPA 	853,346	837,967	15,379	1.8%
Albany-Schenectady Urban Area 	593,142	594,962	-1,820	-0.3%
Saratoga Springs Urban Area 	75,684	64,100	11,584	15.3%
Mechanicville Urban Area	11,799	n/a	n/a	
Ravena-Bethlehem Urban Area	9,346	n/a	n/a	
Corinth Urban Area	3,870	n/a	n/a	

MPO and 2020 Census Urban Areas



MPO and 2020 Census Urban Areas



Minor Urban Area Changes from 2000 to 2020

2010 Name	2010 Census	2020 Name	2020 Census	Notes
Albany-Schenectady	Urban Area	Albany--Schenectady	Urban Area	Called Albany-Schenectady-Troy in 2000 Census - Large Urban Area
Corinth	Urban Cluster	Corinth	Urban Area	Not Urban in 2000
Hoosick Falls	Urban Cluster	Hoosick Falls	Rural Area	Not Urban in 2000
		Mechanicville	Urban Area	Was a Small Urban Area in 2000 Census & part of Albany Urban Area in 2010
Ravena	Urban Cluster	Ravena--Bethlehem	Urban Area	Was a Small Urban Area in 2000
Saratoga Springs	Urban Area	Saratoga Springs	Urban Area	In 2000 Census - Large Urban Area

2020 Census Urban Areas Next Steps

- Wait for guidance and resources (data files, mapping applications/tools) from FHWA and NYSDOT on adjusting/smoothing the Census designated Urban Areas
- Adjusting the Urban Areas is an optional exercise that does not affect the **population** used for urban areas to determine funding allocations for FHWA and FTA funding programs. Also, different agencies and funding programs use different definitions of urban and rural
- The ability to smooth and adjust the extent of urban area boundaries where they are irregular is allowed as a tool to avoid inconsistent urban/rural road segment functional classifications where roads would switch between urban and rural status many times along their length as a result of raw Census-delineated urban area boundaries often being irregular in shape. Roadway functional classification can affect federal aid funding eligibility
- CDTC will collaborate with NYSDOT and FHWA on boundary adjustments
- Adjustments must be submitted to FHWA by December 29, 2023, after approval by CDTC's Planning Committee and Policy Board

2020 Census Results Status





4. CDPRC Planning Updates

- a) Climate Smart Communities Program Update
- b) Other


CDTC Planning Updates

- a) 2023-24 Unified Planning Work Program (UPWP)
- b) Complete Streets Design Guide
- c) Equity Policy Development
- d) Metropolitan Transportation Plan (New Visions) update schedule
- e) CDTC / CDRPC Technical Assistance Program
- f) Bipartisan Infrastructure Law (BIL) – status
- g) Planning Study Status

The 2023-24 Unified Planning Work Program (UPWP) is being developed

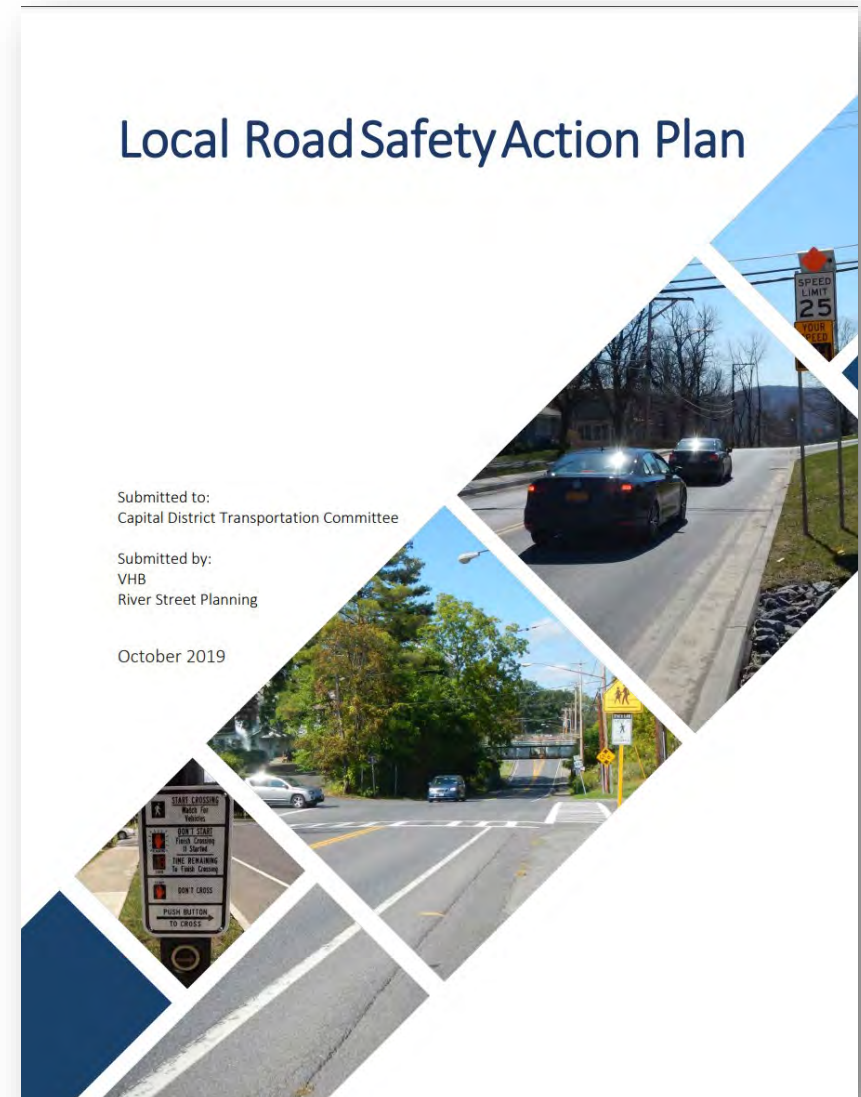
- **\$1 Million** in funding is available to cities, towns, villages, counties, and member organizations in CDTC's metropolitan planning area
- Received **18** proposals requesting over **\$1.2M**
- Timeline:
 - Final proposals submitted: **November 30, 2022**
 - **Planning Committee Programming: January 4, 2023**
 - **Draft 2023-24 UPWP presented for approval to Planning Committee: February 1, 2023**
 - **Public review & consultation period: February 2 – 28, 2023**
 - **Final 2023-24 UPWP presented for adoption to Policy Board: March 2, 2023**
 - www.cdtcmpo.org/2023upwp

2023-2024 UPWP CDTC Staff Budget

Fund Source	Budget Estimate (matched)
2023-2024 FHWA Metropolitan Planning (PL)	\$2,285,053
PL Set-Aside: Complete Streets	\$48,624
FHWA SPR	\$100,000
2023-2024 FTA Section 5303	\$479,140
2022-2023 FTA Section 5303	\$50,000
FTA SCI	\$141,048
NHPP/STBG Flex Funds	\$135,000
Local Agreements & Cash Contributions	\$173,000
Local In-Kind	\$116,000
USDOE – Clean Cities	\$110,000
Safety Grant 	\$1,438,000
Total	\$5,075,865

Safe Streets & Roads For All (SS4A)

- CDTC will administer a \$1,150,000 FHWA Safe Streets and Roads for All Grant for supplemental safety analysis and Visions Zero safety planning in the Capital Region.
- Joint applicants include the Cities of Albany, Saratoga Springs, Watervliet, Troy, Village of Green Island, and NYS DOT.



New Recommended Projects

Sponsor	Project Name	Federal Funds Requested
Town of Milton	Town Center Plan Update	\$75,000
Village of Castleton-on-Hudson	Complete Streets & Connections Plan	\$72,000
Village of Voorheesville	All Access Complete Streets Feasibility Study	\$49,500
Albany County	Broadway Flood Resilient Multi-Modal Corridor Study	\$100,000
Town of Rotterdam	Curry Road & Guilderland Avenue Multi-Modal Study	\$75,000
Town of Colonie	Central Avenue West Corridor Study	\$150,000

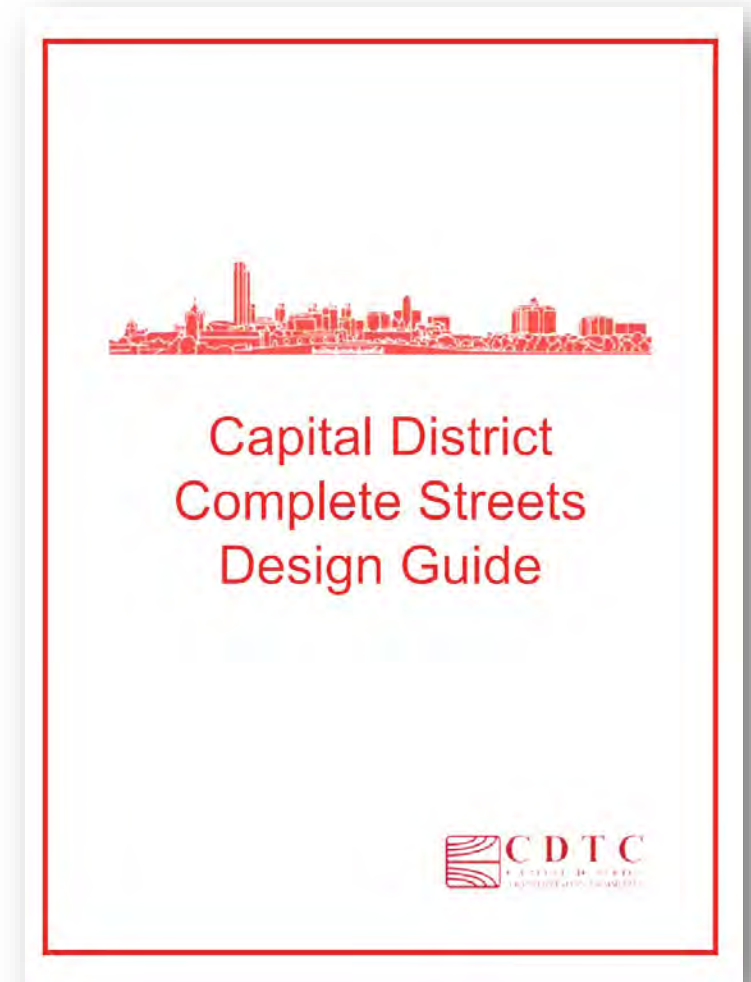
The Complete Streets Guidebook has been released

History

- Recommendation in New Visions 2040 (2015)
- Complete Streets Advisory Committee
 - Reviewed other design guides
 - Guided framework and content
- References existing design guidance throughout
 - FHWA
 - AASHTO
 - ITE
 - NACTO

Sections

- Introduction and benefits
- Process, planning and design
- Example typologies (Complete Streets not the same everywhere)
- Toolbox
 - Sidewalks
 - Roadways
 - Intersections
 - Curbsides



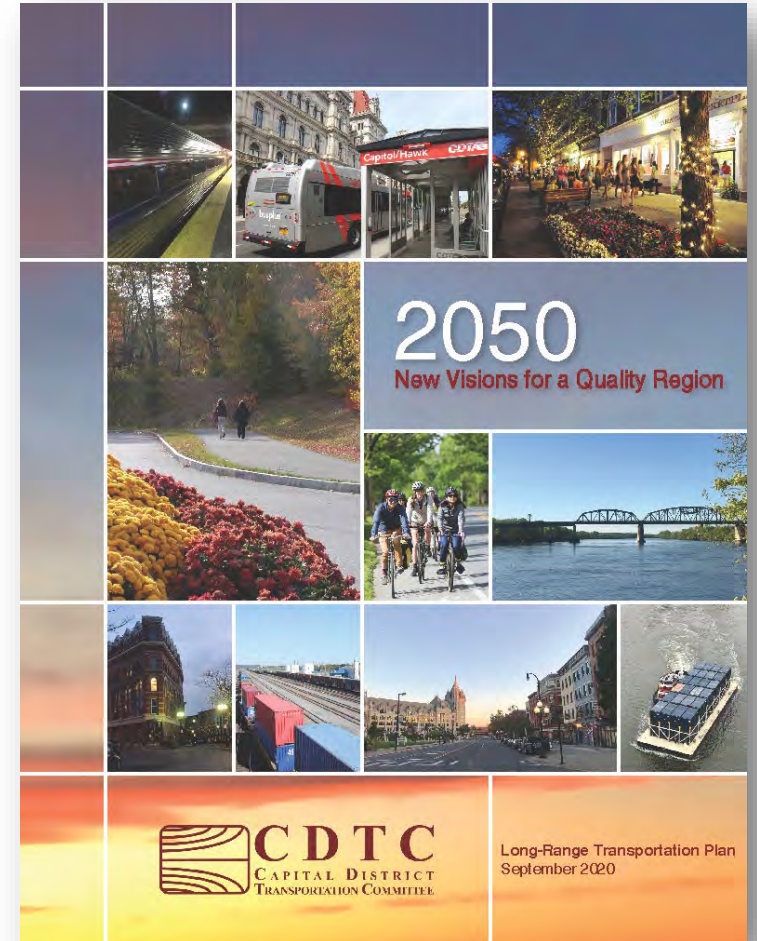
CDTC is drafting an Equity Policy

- The Bipartisan Infrastructure Law (BIL) has increased emphasis on equity in the transportation planning process
- Federal discretionary programs in the BIL have reinforced this priority by adding equity as a foundational program principle or as a project selection criterion
- The Biden Administration and Federal Highway Administration have made reconnecting communities and ensuring the inclusion of historically and economically disadvantaged groups in the planning, project selection and design process a priority
- A draft CDTC policy will be presented to Planning Committee and Policy Board for approval

Metropolitan Transportation Plan (MTP) implementation & planned update

- New Visions Virtual Learning Series is being retired
- All materials are still on website at www.cdtcmpo.org/nv2050
- Request virtual training

-
- MTP Update & scope- anticipate adoption of new MTP in late 2025
 - Regional Trends Report – Spring 2023
 - Branding & Design – Summer 2023
 - Kick-off public outreach – Fall 2023



CDTC/CDRPC Technical Assistance Program

Eligible Projects

Eligible community planning assistance includes but is not limited to one or more of the following:

<p>Comprehensive/Neighborhood Planning</p> <ul style="list-style-type: none">• Guidance in goal setting, plan development and procedural requirements• Data collection and analysis• Research into a planning issue• Identification of innovative solutions to local planning challenges	<p>Community Design Assessment</p> <p>Evaluate a subsection of a community to consider:</p> <ul style="list-style-type: none">• active living• food choices• transportation choices• public safety• social cohesion• social equity• environmental health	<p>General Community Planning</p> <ul style="list-style-type: none">• Public input and community visioning• Meeting facilitation and coordination• Surveys and communications activities• Training• Professional advisement
<p>Land Use Plan Implementation</p> <p>Initiate recommended actions in Comprehensive Plans, Linkage Program Plans or other plans such as:</p> <ul style="list-style-type: none">• zoning language related to electric vehicle infrastructure, access management, groundwater or open space protection• vacant property data gathering• re-evaluating PDD requirements	<p>Data Collection</p> <ul style="list-style-type: none">• Identify issues and/or opportunities for collecting data• Set data collection goals• Plan approach and identify data collection methods• Collect data	<p>Data Analysis and Mapping</p> <ul style="list-style-type: none">• Analyze demographic, building permit, and other community development trends• Data research and visualization• GIS mapping and analysis
<p>Recreation Trail Planning</p> <ul style="list-style-type: none">• Recreation plan guidance• Management plan guidance• Nonmotorized trail plan guidance	<p>Transportation Safety and Operations Planning</p> <ul style="list-style-type: none">• Crash data analysis• Road safety assessments• Traffic signal operational analysis• Intersection analysis• Before and after studies of capital projects• Recommendation and scoping of ITS strategies	<p>Zoning and Site Planning</p> <ul style="list-style-type: none">• Guidance on best practices towards the implementation of planning policies and goals• Zoning ordinance audits• Development of zoning ordinance amendments• Site plan review assistance• Planning for development of regional impact

How to Apply:

If your community is interested in applying, you must contact CDRPC and CDTC to discuss your request.

Send an email to techassist@CDRPC.org or call 518-458-2161 and provide your name, phone number and a time convenient for representatives to call you.

Bipartisan Infrastructure Law (BIL)

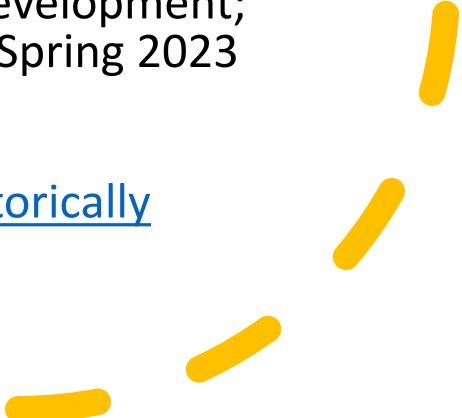
www.cdtcmpo.org/BIL



The screenshot shows the CDTC (Capital District Transportation Committee) website. At the top left is the CDTC logo. To its right is a search bar and contact information: "Address: One Park Place Albany, NY 12205-1606" and "Phone: (518) 458-2161 | Email: cdtc@cdtcmpo.org". Below this is a navigation menu with items like "About Us", "Committees", "What We Do", "Transportation Plans", "Maps & Data", "News & Events", and "Contact Us". The main content area features a large heading "Federal Transportation Funding Available" with a sub-heading "BIPARTISAN INFRASTRUCTURE LAW". Below this is a paragraph explaining the BIL and a link to "Learn More". To the right of this text is an image of a train. Further down, there are sections for "Guidance and Support" and "Grant Opportunities", each with several links to related documents and programs.



This screenshot shows a page of funding opportunities on the CDTC website. It is organized into several sections. On the left, there are links for "Reconnecting Communities Pilot Program - Planning Grants and Capital Construction Grants", "Safe Streets and Roads for All (SS4A) Grant Program", "Strengthening Mobility and Revolutionizing Transportation (SMART) Grants Program", and "Tribal Transportation Program (TTP)". On the right, there are links for "Transit-Oriented Development (TOD) Planning Pilot Program" and "Pilot Program for Transit-Oriented Development (TOD) Planning Grant Information". In the center, there are links for "Grant Program Website", "Notice of Funding Opportunity", "Understanding Non-Federal Match", and "Webinars Page". At the bottom, there are links for "Draft NYS National Electric Vehicle Infrastructure Formula Program Development Plan - Survey/Don't No Comment closing in September", "NYS NEVI Program Website", "Interactive Eligibility Map", "Notice of Proposed Rulemaking", "Factsheet", and "Electric Vehicle Infrastructure Funding on the National Highway System - Guidance". On the far right, there is a section for "PROTECT Formula Program" with links for "Factsheet" and "Guidance", and a "Have Questions? Contact Us!" section with contact information for Sandra Masiewicz AICP, CDTC Executive Director.

- 
- Charging & Fueling Infrastructure Program – NOFO released March 14th
 - Safe Streets for All – grant received and expected to be reopened April 2023
 - Promoting Resilient Operations for Transformative, Efficient, and Cost Saving Transportation (PROTECT) – expected to open in Winter/Spring 2023
 - Reconnecting Communities Program & Neighborhood Access & Equity Grant Program – expected to open Late Spring 2023
 - Carbon Reduction Program – statewide plan in development; programming of formula funds expected by Late Spring 2023
 - [Transportation Disadvantaged Census Tracts \(Historically Disadvantaged Communities\)*](#)
- 

Status of Planning Initiatives

(as of March 1, 2023)

STATUS OF CDTC PLANNING INITIATIVES AS OF MARCH 1, 2023

NAME AND LOCAL SPONSOR	CONSULTANT OR STAFF, PROJECT COST, CDTC CONTACT	FUNDING APPROVAL DATE	STATUS	ESTIMATED COMPLETION DATE	PROJECT WEBSITE LINK
LINKAGE PROGRAM					
1. Land Use Regulations Update Village of Menands	The Chazen Companies \$80,000 Rima Shamieh	Policy Board Approved 3/5/20	This project is complete.	January 2023	https://villageofmenands.com/government/land-use-regulations-zoning-update/
2. Route 4 Corridor Study: Inter-Municipal Update Town of East Greenbush	M.J. Engineering and Land Surveying \$90,000 Chris Bauer	Policy Board Approved 3/4/21	The first round of public outreach is underway. A survey was developed and distributed. The first public meeting is on February 28, 2023.	July 2023	https://nyroute4study.com
3. Rensselaer Waterfront Connectivity Study City of Rensselaer	MJ Engineering and Land Surveying, PC \$60,000 Andrew Tracy	Policy Board Approved 3/4/21	Public input from the second public workshop was summarized and provided to a stakeholder committee on January 17, 2023. Preferred concepts were selected by City. The final report is being prepared by consultant team.	March 2023	https://www.rensseleerriverfrontconnections.com/
4. Federal Street Corridor Study City of Troy	Creighton Manning Engineering \$50,000 Carrie Ward	Policy Board Approved 3/4/21	The Study Advisory Committee is reviewing the final draft that addresses public comments.	March 2023	www.FixFederalStreet.com
5. Town of Brunswick Hoosick Road Corridor Study Town of Brunswick	Creighton Manning Engineering \$63,000 Andrew Tracy	Policy Board Approved 3/3/22	Existing conditions assessment underway. First Study Advisory Committee meeting was held on January 25, 2023. Monthly core team status calls began on January 23, 2023.	September 2023	TBD
6. Sand Creek Road Complete Street Feasibility Study Village of Colonie	TBD \$65,000 Jacob Beeman	Policy Board Approved 3/3/22	Project kick-off meeting was held on January 30, 2023. Consultant is currently working on the project website, purpose and need statement, existing conditions report, and finalizing the Study Advisory Committee (SAC) membership. First SAC meeting is expected to be held in mid-March.	September 2023	TBD
7. City of Schenectady Albany & Crane Streets Linkage Study City of Schenectady	PLACE Alliance \$90,000 Jen Ceponis	Policy Board Approved 3/3/22	The consultant team has developed a Public Enngagement Plan and is preparing the Existing Codnditions Report. The first Study Advisory Committee meeting was January 31st.	November 2023	https://www.craig-main-connection.com/albany--crane-streets.html

NAME AND LOCAL SPONSOR	CONSULTANT OR STAFF, PROJECT COST, CDTC CONTACT	FUNDING APPROVAL DATE	STATUS	ESTIMATED COMPLETION DATE	PROJECT WEBSITE LINK
------------------------	---	-----------------------------	--------	------------------------------	-------------------------

COMMUNITY PLANNING TECHNICAL ASSISTANCE PROGRAM

1. Riverside Avenue Access Improvements City of Rensselaer	CDTC, CDRPC and City Staff \$10,035.50 Chris Bauer	Planning Committee Approved 8/3/22	A focus group was held on January 27, 2023; a public meeting was held on February 2, 2023. The draft tech memo was revised to reflect the outcomes of the focus group and public meeting, and is currently being reviewed by the City.	March 2023	N/A
2. Reconnecting the West Side City of Saratoga Springs	CDTC, CDRPC and City Staff \$13,512 Jen Ceponis	Planning Committee Approved 10/5/22	A Stakeholder Meeting was held on February 8th and CDTC/CDRPC staff are developing an Existing Conditions Memo. The next steps include developing a memo containing potential treatments and improvements to develop safe walking/bicycling routes in the area.	March 2023	N/A
3. East Greenbush Natural Resource Inventory East Greenbush	CDTC, CDRPC and Town Staff \$13,552.34 Teresa LaSalle	Planning Committee Approved 1/4/23	A project kickoff meeting was held on January 30th. CDRPC staff has obtained most of the map and data sets needed from the Town (2 sets of data anticipated from DEC). Access to the Town's GIS platform has also been secured. Most of the maps have been completed. A progress meeting is slated for February 27th.	March, 2023	N/A

ADDITIONAL CDTC PLANNING INITIATIVES

1. New Visions 2050 CDTC - Regional	CDTC Staff \$100,000 Jen Ceponis	Included in the 2020-2022 UPWP	CDTC continues to offer the Virtual Learning Series and Virtual Local Government Training. View the schedule and sign up for training at www.cdtcmpo.org/nv2050 . CDTC is also monitoring mobility trends and will update and amend the plan accordingly. The next webinar is scheduled for March 21 at 3:30 pm: https://www.cdtcmpo.org/news/nv-webinars . CDTC staff is monitoring local trends and preparing to develop a scope for the Metropolitan Transportation Plan update that is anticipated to begin in Spring 2023.	Adopted September 3, 2020	https://www.cdtcmpo.org/nv2050
2. Bus Lane Feasibility Study CDTA/CDTC - Regional	Foursquare ITP \$200,000 Sandy Misiewicz	Included in the 2020-2022 UPWP	The final report was presented to CDTC's Planning Committee at their February 2, 2023, meeting. The consultant is preparing the final project deliverables. The project is substantially complete.	March 2023	https://www.buslanestudy.com/
3. NY 378 Bridge Transportation Scoping/PEL Study NYS DOT	WSP \$400,000 Susan Olsen, NYSDOT Andrew Tracy	TIP Project A605/R344: NY 378 Troy Menands Bridge Study	A Troy-Menands Bridge PEL Steering Committee meeting was held on January 18, 2023. Updates to existing conditions analyses were presented. Updated Agency Coordination Plan was prepared by the consultant team. The Transportation Partnering Committee Meeting #2 was held on February 15, 2023.	TBD	TBD
4 Albany County Loop Trail Feasibility Study	CDTC Staff \$30,000 Jen Ceponis	Albany County support contract 12/8/20	CDTC has developed the final technical memorandum which is being reviewed by Albany County.	March 2023	N/A
5. Regional Truck Parking Study	CDTC Staff \$137,750 Chris Bauer	Planning Committee Approved 4/7/21	The project team held a working session with the Freight Advisory Committee at their February 15, 2023, meeting. The consultant team is refining the analysis to develop parking time-of-day and supply and demand profiles.	March 2023	TBD

NAME AND LOCAL SPONSOR	CONSULTANT OR STAFF, PROJECT COST, CDTC CONTACT	FUNDING APPROVAL DATE	STATUS	ESTIMATED COMPLETION DATE	PROJECT WEBSITE LINK
------------------------	---	-----------------------------	--------	------------------------------	-------------------------

ADDITIONAL CDTC PLANNING INITIATIVES (continued)






6. ADA Self-Evaluation and Transition Plan for Pedestrian Infrastructure	City of Albany Program capacity: \$75,000 Carrie Ward	Included in the 2020-2022 UPWP	The draft is posted for public comment at https://www.albanyny.gov/DocumentCenter/View/7737 and comments will be accepted through March 5th.	March 2023	https://www.albanyny.gov/ADA_webpage
7. ADA Self-Evaluation and Transition Plan for Pedestrian Infrastructure	Village of Ballston Spa Town of Guilderland City of Troy \$107,000 Carrie Ward	Planning Committee approved 11/2/2022	Ballston Spa and Guilderland will kick off in March.	December 2023	N/A
8. Hoosick Asset Management Plan Town of Hoosick	TBD \$33,000 Teresa LaSalle	Policy Board Approved 3/3/22	CDTC received two proposals, which are currently under review.	September 2023	N/A
9. Design-Engineering Feasibility and Planning Study for Reimagining the I-787 Corridor NYSDOT	TBD \$5,000,000 Greg Wichser, NYSDOT Kelly Kircher, NYSDOT Chris Bauer Jen Ceponis	TIP Project A609 Reimagining the I-787 Corridor Planning Study	The Request for Qualifications for architectural / engineering services was released by NYSDOT August 17, 2022 and proposals were due September 7, 2022. NYSDOT posted an Engineering Opportunity Designation for the RFQ to Parsons Transportation Group of NY, Inc. in association with Foit Albert Assoc. Arch. Eng. & Surveying (20% participation); AKRF, Inc.; Fisher Associates, PE, LS, LA, DPC; Creighton Manning Engineering LLP.	March 2026	N/A
10. On-Demand Motor Vehicle, Bicycle and Pedestrian Count Services	NDS (National Data & Surveying Services) Up to \$160,000 Teresa LaSalle	Included in the 2022-2023 UPWP	Several locations have been counted to date. Limited counts are expected to occur between January 2023 and March 2023.	18 month contract with an optional one year extension.	N/A
11. Regional Signal Timing Program	TBD \$100,000 Andrew Tracy	Included in the 2022-2023 UPWP	The RFP was released on December 16, 2022 and proposals were received January 25, 2023. Six proposals recieved; consultant selection process is underway.	March 2024	N/A

The Smart Mobility Toolbox is complete!

1. Case studies from peer metro areas / cities
 - Buffalo, NY
 - Minneapolis, MN
 - Columbus, OH
 - Other
2. Smart Community Tools
 - Non-Vehicular mobility
 - Traffic management
 - Energy & infrastructure
 - Parking management
 - Smart Transit
 - Connected / autonomous / electric vehicles
3. Implementation Roadmap
 - Simple
 - Advanced
 - Dynamic

Example of implementation matrix

Final Report

Focus Area	Smart Community Element	Implementation Locally	Community Applicability	Tier of Complexity	Cost
Parking Management	Parking Management Application	Smart parking meters have been implemented by the City of Troy and Albany Parking Authority		2	\$\$
	Dynamic parking			3	\$\$
Smart Transit	Asset Management and Maintenance Applications			2	\$\$
	Mobility as a Service (MaaS)			3	\$
	Microtransit Services / Flexible Routing System	CDTA operates FLEX service in the region		2	\$\$
	Quality Public Transit Website			2	\$\$

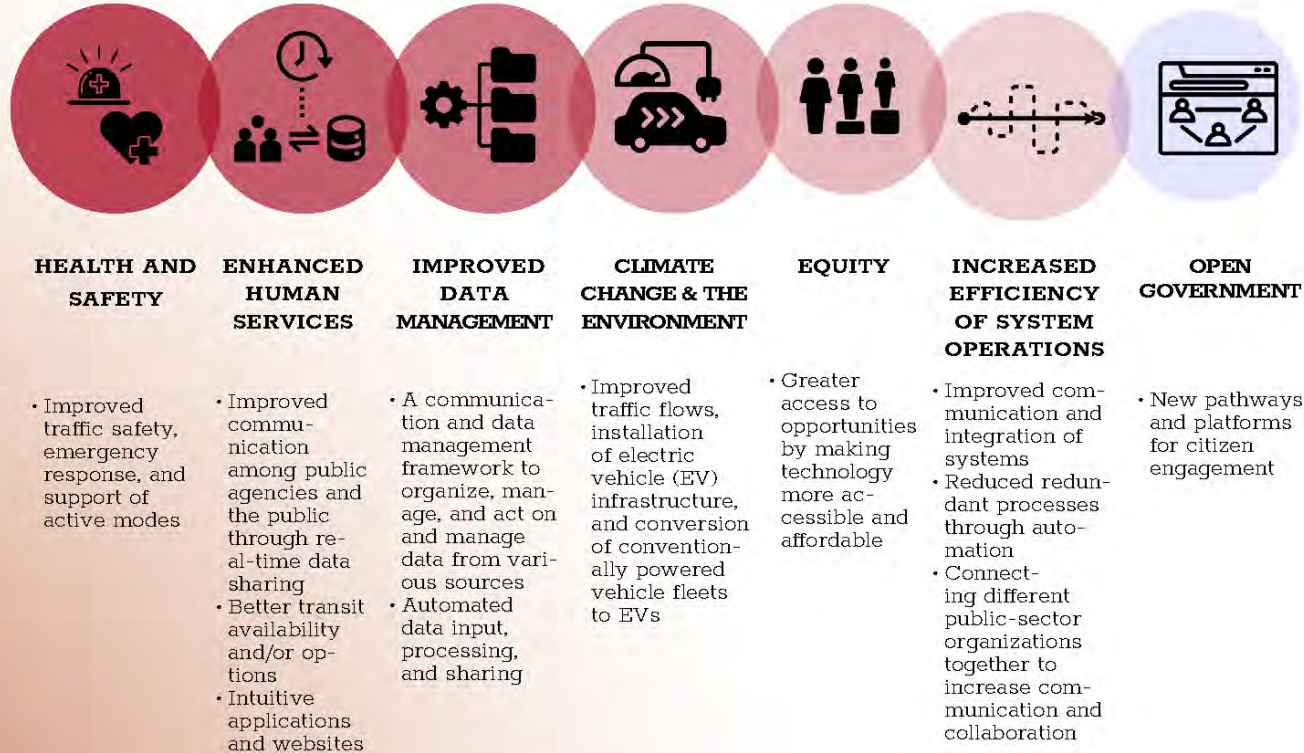
SMART COMMUNITY TOOLS

What is a Smart Community?

A 'Smart community' is a term used to describe a community that applies technologically enabled devices or systems to help the community perform more efficiently. The 'smart community' framework is an extensive strategy that can address the needs of a municipality by leveraging different technologies. Today, most cities and many smaller municipalities use smart strategies or communicate with the public through web-based applications. The recommendations for the Capital Region focused on the following areas of smart communities:

- Non-Vehicular Mobility
- Traffic Management
- Energy & Infrastructure
- Parking Management
- Smart Transit
- Electric/Connected/Autonomous Vehicles

Benefits of Smart Tools:



How to make your community a Smart Community?

In developing smart community solutions, strategies should integrate innovative principles and processes to facilitate sustainable, equitable, and appropriate solutions. The **Smart Mobility Toolbox: Smart Community Solutions for the Capital Region** is a resource for communities of all sizes within the Capital Region. If you are interested in expanding the smart community capabilities of your municipality visit the Smart Mobility Toolbox at:

<https://www.cdtmpo.org/what-we-do/smart-communities> or email cdtc@cdtmpo.org.

TOOLS IN PRACTICE

TRANSIT QUEUE JUMPS

Queue jump lanes are bus-only curbside lanes that allow buses to bypass general traffic queued up at traffic signals. Right turn lanes can double as queue jump lanes for buses traveling straight through an intersection.

MICROTRANSIT

Microtransit typically takes the form of a small bus or van that serves passengers by using dynamically generated routes. This service differs from typical transit services with fixed routes in that it provides flexible routes that serve a targeted geographic area. This service may be more accessible for some users who cannot benefit from other shared modes that are more physically demanding, such as bike, scooter, or moped share systems.

TRAFFIC SIGNAL PRIORITY

Traffic Signal Priority (TSP) is a system that can either lengthen green time when a bus is approaching a traffic signal or shorten red time while a bus is waiting at a signal based on predetermined parameters. It can be used to shorten bus travel time and improve schedule reliability. Parameters include schedule adherence, passenger load, side street traffic volume and others.

SMART CYCLE TRACK

A smart cycle track utilizes connected infrastructure technology that contains sensors to detect bicyclists and trigger traffic signals to respond to the presence of bicyclists and gives them priority to navigate the intersection through bicycle signals that turn green before vehicle signals.

ROADSIDE SENSORS FOR CV's

Roadside sensors (RSUs) are hardware embedded in pavement or on streetlight poles. These smart sensors are the component part of many smart city solutions that allow the system to collect data.

EV CHARGING

Electric vehicle supply equipment provides electricity to an electric vehicle. Commonly called charging stations or charging docks, they provide electric power to the vehicle to recharge its batteries. Electric vehicle supply equipment systems include electrical conductors, software, and communications protocols that deliver energy efficiently and safely to the vehicle.

MICROMOBILITY

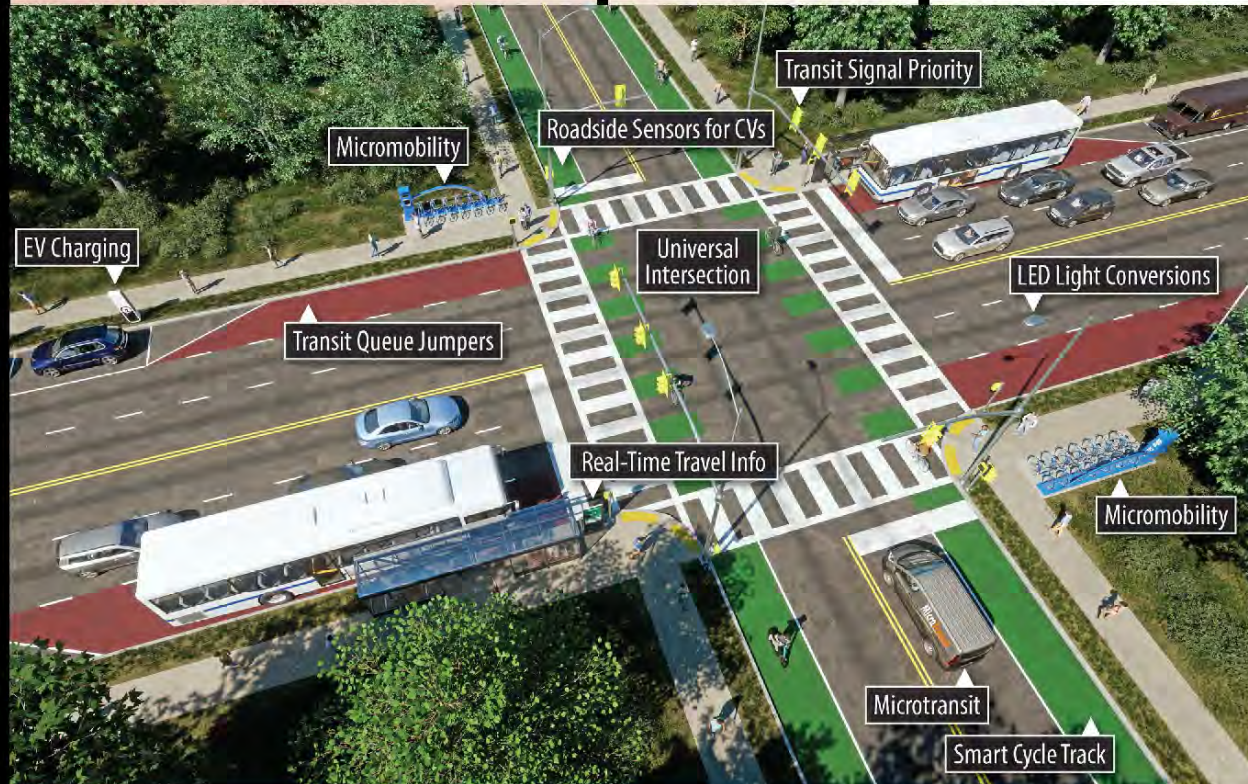
Micromobility services use small, fully, or partially human-powered vehicles such as bikes, e-bikes, and e-scooters. Access to these devices is generally facilitated by mobile app or kiosk where the vehicles can be rented. These vehicles are picked up and dropped off in the public right-of-way and are meant for short trips of less than 10 minutes.

UNIVERSAL INTERSECTION

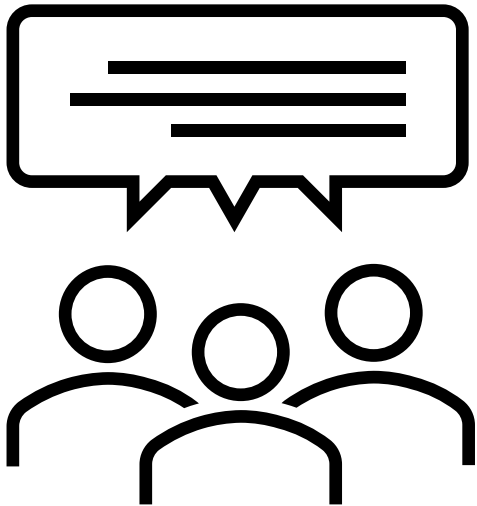
Universally designed intersections are designed to increase safety for pedestrians with special consideration for differently abled populations. In the context of smart city solutions, the intersections are equipped with sensors that facilitate vehicle-to-infrastructure communication. These sensors then connect to an app on the pedestrian's phone that informs them that it is safe to cross.

LED STREETLIGHT CONVERSIONS

Replacing traditional streetlights with LED lights provides energy savings, better quality light, and cost savings. Additionally, they can incorporate smart, connected technologies through sensors within the streetlights. The capabilities of smart technology within the streetlights can vary from basic capabilities like dimming lights to more complex tasks such as photographing speeding cars to assist with traffic enforcement.



Upcoming Training / Workshops



- a. [CDRPC Spring Webinar Series](#), every Wednesday from March 15 – May 3, 2023. Registration is free.
- b. American Planning Association
 - i. [National Planning Conference](#), April 1-4, 2023, in Philadelphia, PA
 - ii. [NY Upstate APA Mini Conference](#), September 15, 2023 in Syracuse, NY.
- c. NYS LTAP Center – Cornell Local Roads Program: Register for upcoming workshops: <https://nysltapclrp.regfox.com/2023-engineering-workshops>
 - i. Federal Aid 101 Virtual Workshop, September 12, 2023
 - ii. ADA in the Public Right-of-Way, July 12, 2023 in Schenectady County, NY
 - iii. Low-Volume Road Pavement Design, August 1, 2023 in Albany, NY

Visit the **News & Events** Pages on both the [CDTC](#) and [CDRPC](#) websites for additional updates on training and workshops



Other Regional, State, & Local Planning Updates

- Comprehensive Plans
- Zoning Updates
- Traffic Studies
- Brownfield Redevelopment
- Downtown Redevelopment Initiatives
- Resiliency Planning

Thank you!



CapitalDistrictMPO



@MPOCDTC



@MPOCDTC



Capital District Transportation Committee

***2023 Meeting Schedule: June 15;
September 21; December 21 @ 9:30 am***

