

## Uncle Sam Bikeway

The Uncle Sam Bikeway (USB) is a 3.5 mile multi-use path on a former railroad bed running north-south in the City of Troy. The trail begins at Middleburgh Street and ends at Northern Drive in Lansingburgh and connects neighborhoods with parks, schools, and various commercial and retail establishments. The corridor formerly served the Troy and Boston Railroad, the Fitchburg Railroad, and lastly the Boston and Maine Railroad and was dismantled in the 1970s. The USB was opened in 1981.

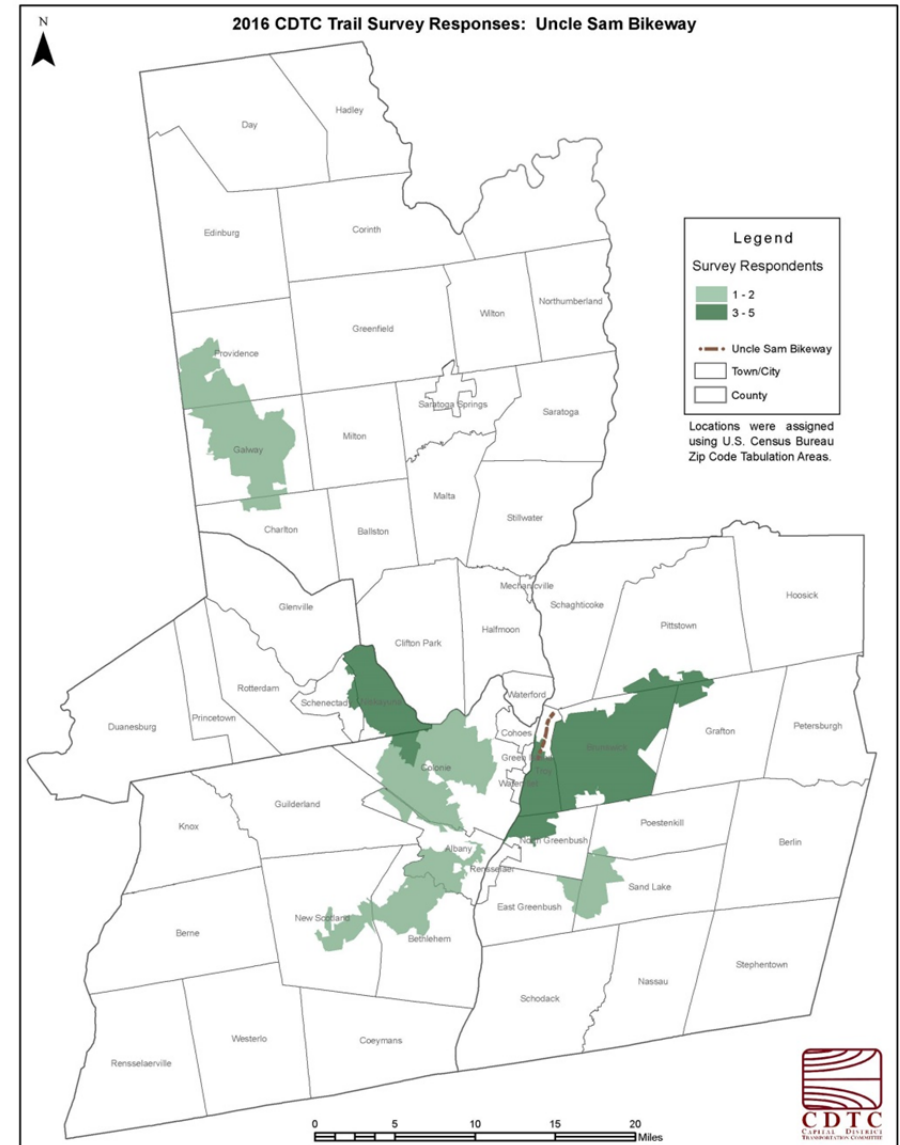
No on-trail surveys were completed on the USB and 18 trail users reported using the USB. A total of 85 surveys were mailed to adjacent residential property owners and 16 were returned. Based on the online trail user survey responses, users came from 10 different zip codes. The zip codes with the highest number of trail users were Troy, Niskayuna, Albany, and Delmar. Trail count data collected showed more bicyclists than pedestrians in the Garden Court area of the trail but more pedestrians than bicyclists in the 114 Street area of the trail and more male users at both locations.

While the trail feels isolated it connects urban neighborhoods and property uses. Trail use slightly increased since 2006.



*Uncle Sam Bikeway, Troy*

## Uncle Sam Bikeway Trail Users by Zip Code



## Uncle Sam Trail

Troy

Trail length – 3.5 miles

### Estimated Annual Usage

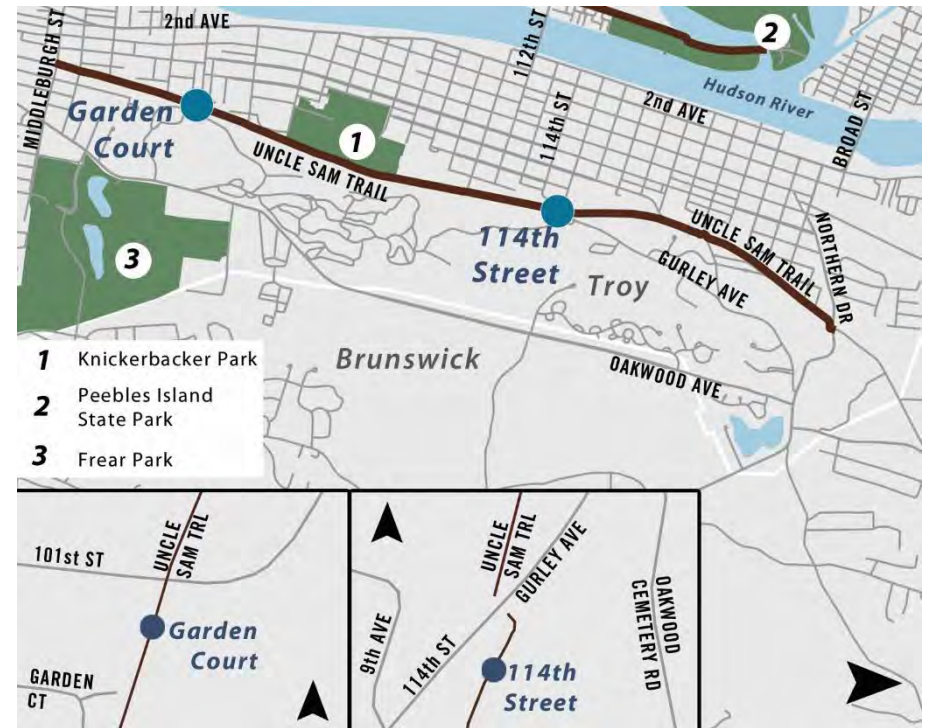
114th St	20,358
Garden Ct	33,150

### Estimated Seasonal Usage

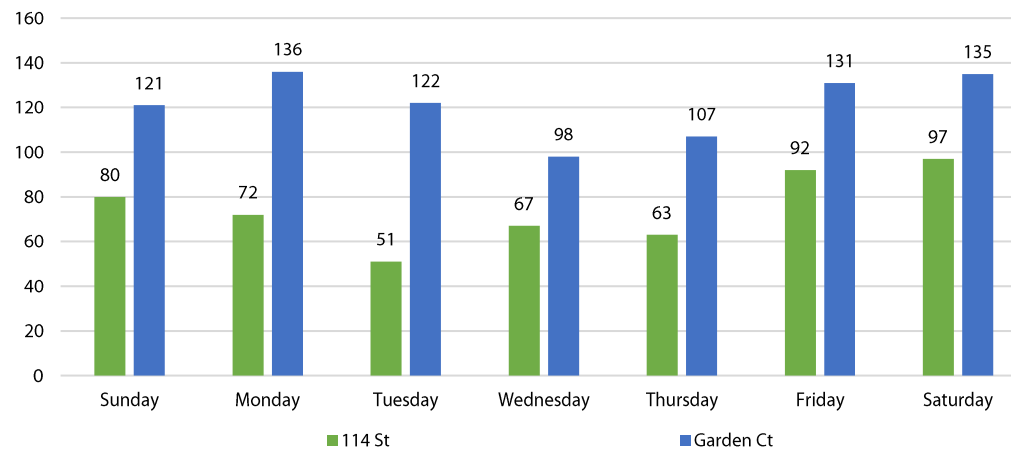
	114 St	Garden Ct
Winter	2,378	3,872
Spring	6,586	10,724
Summer	7,803	12,706
Fall	3,591	5,848

### Usage Mode Split

	114 St	Garden Ct
Bicyclists	23%	63%
Pedestrians	77%	37%
Other	0%	0%



### Daily Usage

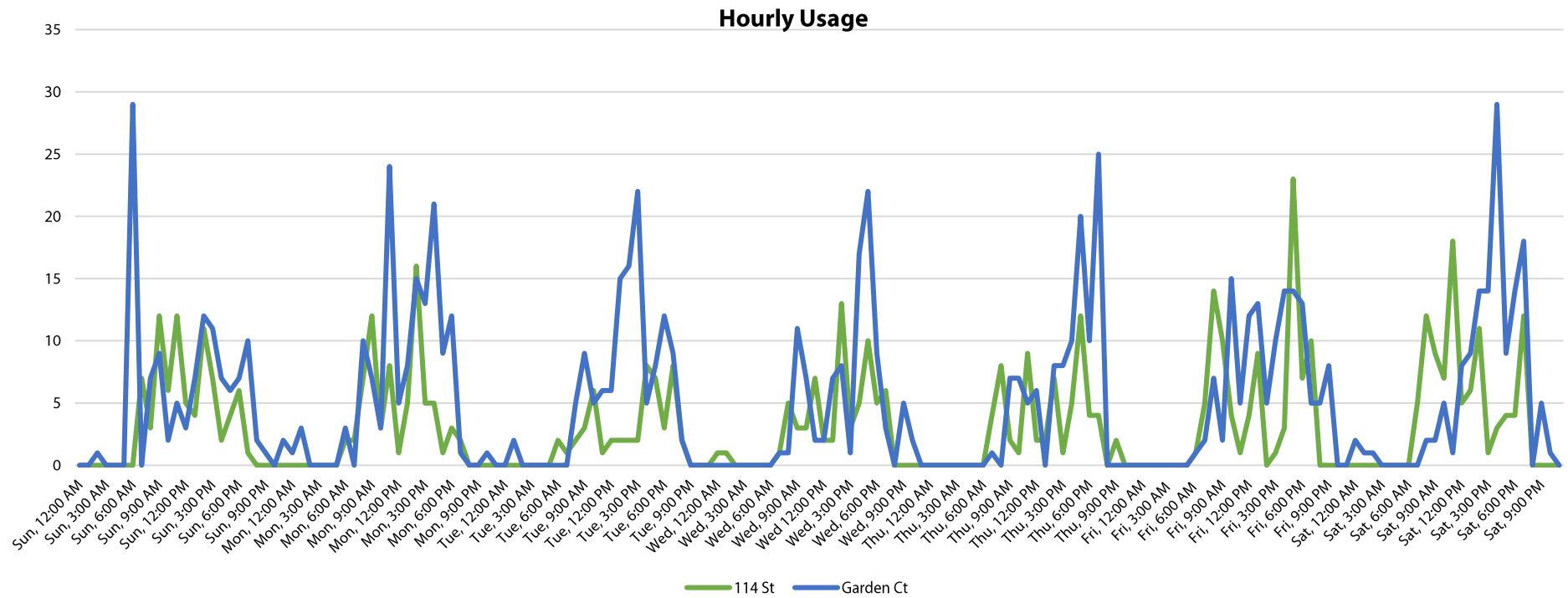


### Daily Usage Profile

	114th St	Garden Ct
Average weekday	69	119
Average weekend	89	128
Maximum weekday	Friday	Monday
Maximum weekend	Saturday	Saturday
Peak weekday usage	Friday, 5-7 PM	Tuesday, 2-4 PM
Peak weekend usage	Saturday, 10 AM-12 PM	Saturday, 3-5 PM

Estimated Monthly Usage		
	114th St	Garden Ct
January	611	995
February	611	995
March	1,425	2,321
April	2,239	3,647
May	2,239	3,647
June	2,443	3,978
July	2,647	4,310
August	2,850	4,641
September	2,239	3,647
October	1,221	1,989
November	1,221	1,989
December	611	995
<b>Annual</b>	<b>20,358</b>	<b>33,150</b>

Usage Gender Split				
	114th St		Garden Ct	
	Female	Male	Female	Male
Bicyclists	3%	19%	24%	54%
Pedestrians	32%	45%	17%	29%
Overall	35%	65%	41%	59%



## Adjacent Residential Survey Summary

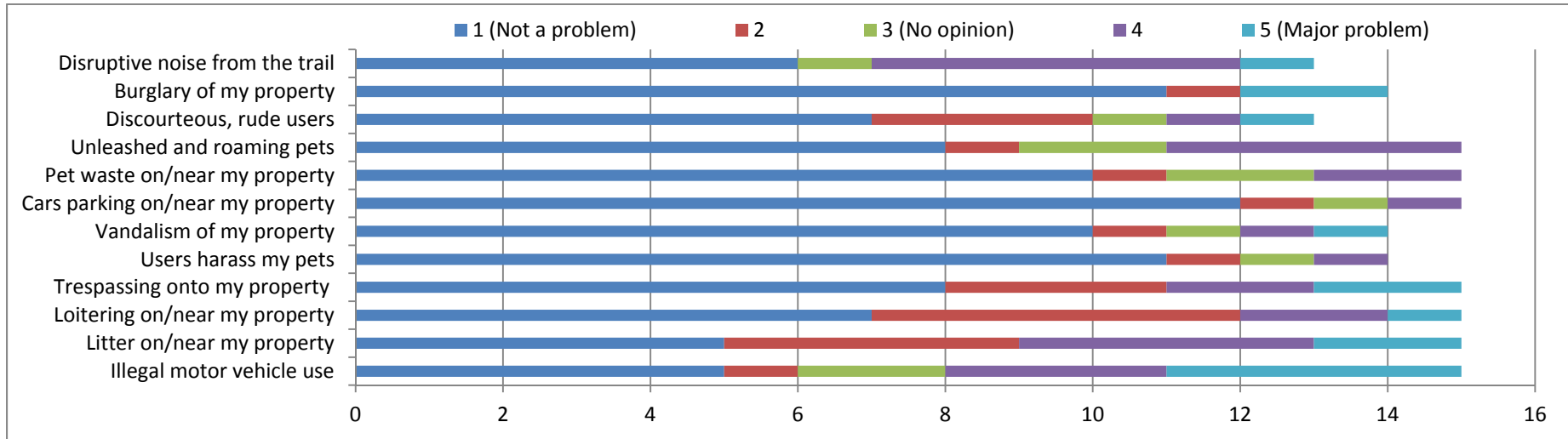
Which of the following most accurately describes how you use your property near the Trail?		
It is my primary residence	16	100.0%
I rent to a tenant, and do not occupy the residence	0	0.0%
It is my second home	0	0.0%
It is unoccupied	0	0.0%
Other	0	0.0%
Where is the trail in relation to your property line?		
The trail runs through my property	0	0.0%
the trail runs along the edge of my property	7	43.8%
The trail is near my property but not touching it	8	50.0%
Don't know	0	0.0%
No answer	1	6.3%
Approximately how far (in feet) is the rail trail from your house?		
Less than 100 ft.	6	37.5%
100 ft. to 199 ft.	3	18.8%
200 ft. to 499 ft.	5	31.3%
500 ft. or more	1	6.3%
No answer	1	6.3%
Approximately how large is your property?		
Less than 1/2 acre	10	62.5%
Between 1/2 and 1 acre	5	31.3%
Between 1 and 3 acres	1	6.3%
3 acres or more	0	0.0%

What is the approximate current value of your property?		
Less than \$99,999	4	25.0%
\$100,000-199,999	9	56.3%
\$200,000-299,999	1	6.3%
\$300,000-399,999	1	6.3%
\$400,000-\$499,999	0	0.0%
\$500,000 or more	0	0.0%
No answer	1	6.3%
How would you describe the setting of your house near the trail?		
Urban	3	18.8%
Suburban	10	62.5%
Rural	2	12.5%
No answer	1	6.3%
When did you acquire your house?		
After the trail was built	11	68.8%
Before the Trail was built	4	25.0%
No answer	1	6.3%
Compare your initial reaction to the idea of living near the trail to how you feel about living near the trail today. Would you say that living near the trail is better or worse than you expected it to be?		
Much better	2	12.5%
Better	3	18.8%
Same	9	56.3%
Worse	2	12.5%
Much worse	0	0.0%

Do you feel the trail poses a risk to your own or your family's safety due to the activities of trail users?		
Yes	3	18.8%
No	9	56.3%
No opinion	3	18.8%
No answer	1	6.3%
If you were to try and sell your property, do you think being near the trail will make it harder or easier to sell?		
Much easier	1	6.3%
Easier	4	25.0%
Same	7	43.8%
Harder	3	18.8%
Much harder	0	0.0%
No answer	1	6.3%
How do you think being located near the trail has affected the resale value of this property?		
Lowered the resale value	2	12.5%
Increased the resale value	3	18.8%
No effect on the resale value	5	31.3%
No opinion	4	25.0%
No answer	2	12.5%
Overall, how satisfied are you with having the trail as a neighbor?		
Very satisfied	2	12.5%
Satisfied	5	31.3%
Indifferent	5	31.3%
Unsatisfied	3	18.8%
Very unsatisfied	0	0.0%
No answer	1	6.3%

How do you feel the trail has affected the quality of your neighborhood?		
Highly improved	3	18.8%
Improved	1	6.3%
No impact	8	50.0%
Worsened	3	18.8%
Completely deteriorated	0	0.0%
No answer	1	6.3%
Do you feel your proximity to the trail has improved your physical activity levels?		
Yes	6	37.5%
No	8	50.0%
Not sure	0	0.0%
No answer	2	12.5%
Do you feel that the development and management of trail is a good use of public funds?		
Yes	7	43.8%
No	5	31.3%
No opinion	1	6.3%
No answer	3	18.8%
How often do the members of your household use the trail?		
Daily	0	0.0%
Frequently	3	18.8%
Occasionally	3	18.8%
Rarely	5	31.3%
Never	3	18.8%
No answer	2	12.5%

To what extent do you feel the following items are problems for your household as a result of the trail and its users?



To what extent do you feel that the trail is important in providing the following benefits to the surrounding community?

