

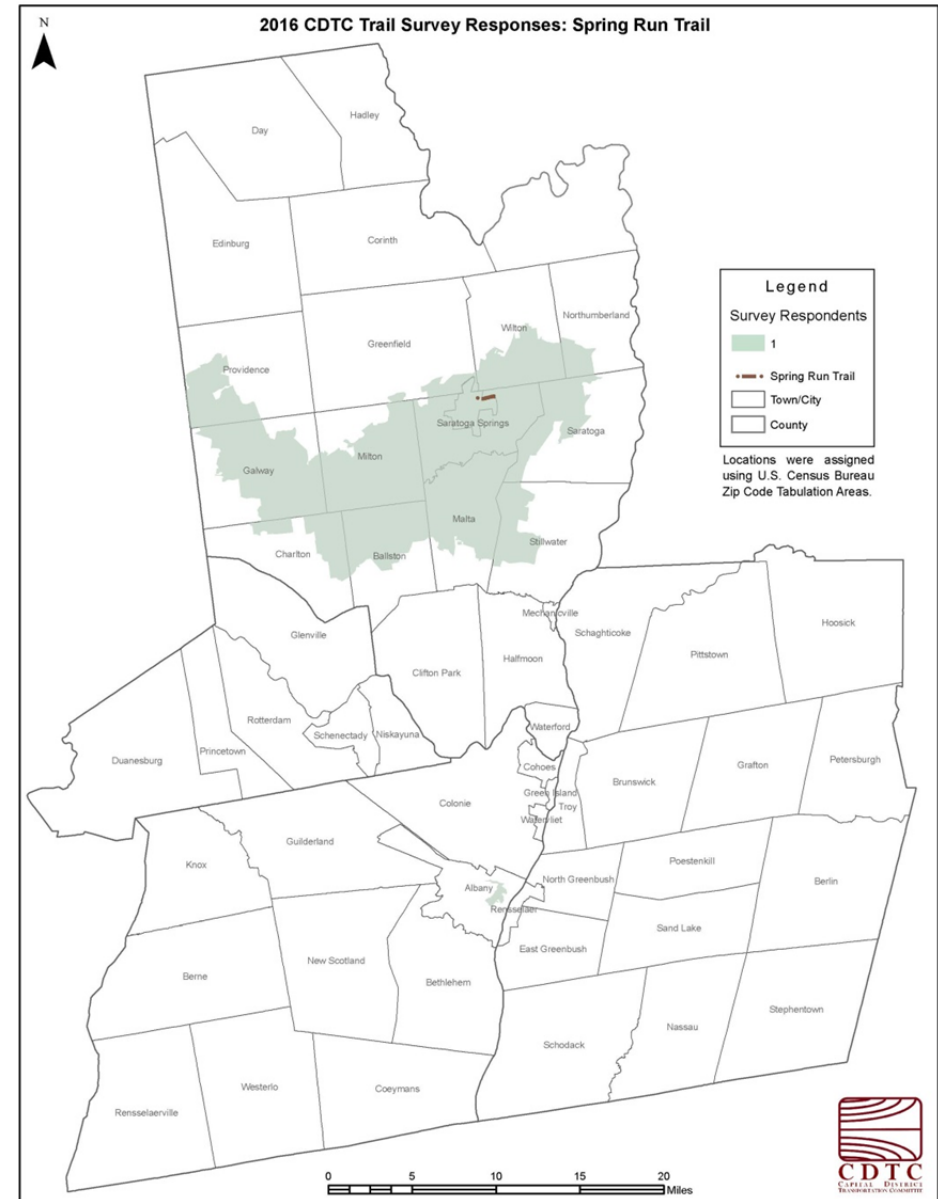
Spring Run Trail

The Spring Run Trail (SRT) stretches just over 1 mile beginning at East Avenue and ending at the Wilton border on the west side of I-87. The corridor is a former railroad bed converted to a multi-use trail and completed in 2010. The trail connects areas of new development in the City along Excelsior Avenue to downtown Saratoga Springs.

No trail user surveys were collected on the trail and only 4 survey respondents reported using the SRT in the online trail user survey. There were 18 adjacent residential property owner surveys mailed and 6 were returned. According to trail count data, the trail attracts significantly more pedestrians than bicyclists and more female than male users.



Spring Run Trail Use by Zip Code



Spring Run Trail

Saratoga Springs

Trail length – 1.1 miles

Estimated Annual Usage

East Ave	64,155
Excelsior Spring Ave	63,102

Estimated Seasonal Usage

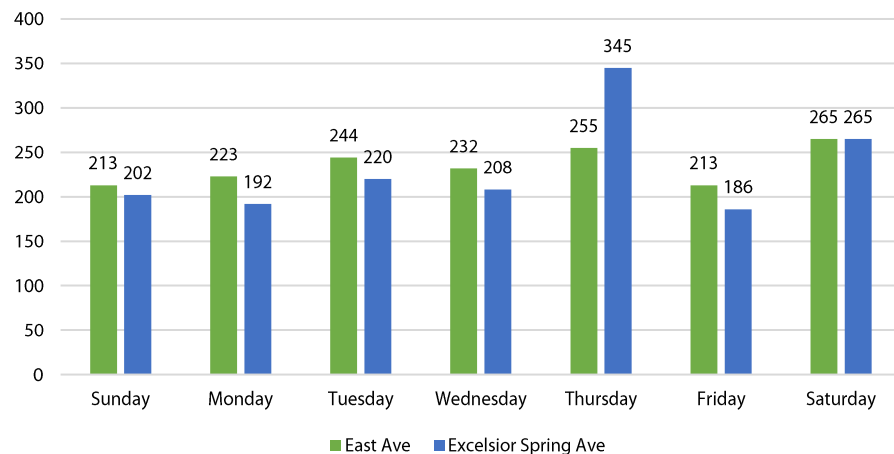
	East Ave	Excelsior Spring Ave
Winter	7,493	7,370
Spring	20,754	20,413
Summer	24,591	24,187
Fall	11,317	11,131

Usage Mode Split

	East Ave	Excelsior Spring Ave
Bicyclists	19%	14%
Pedestrians	77%	86%
Other	3%	0%



Daily Usage



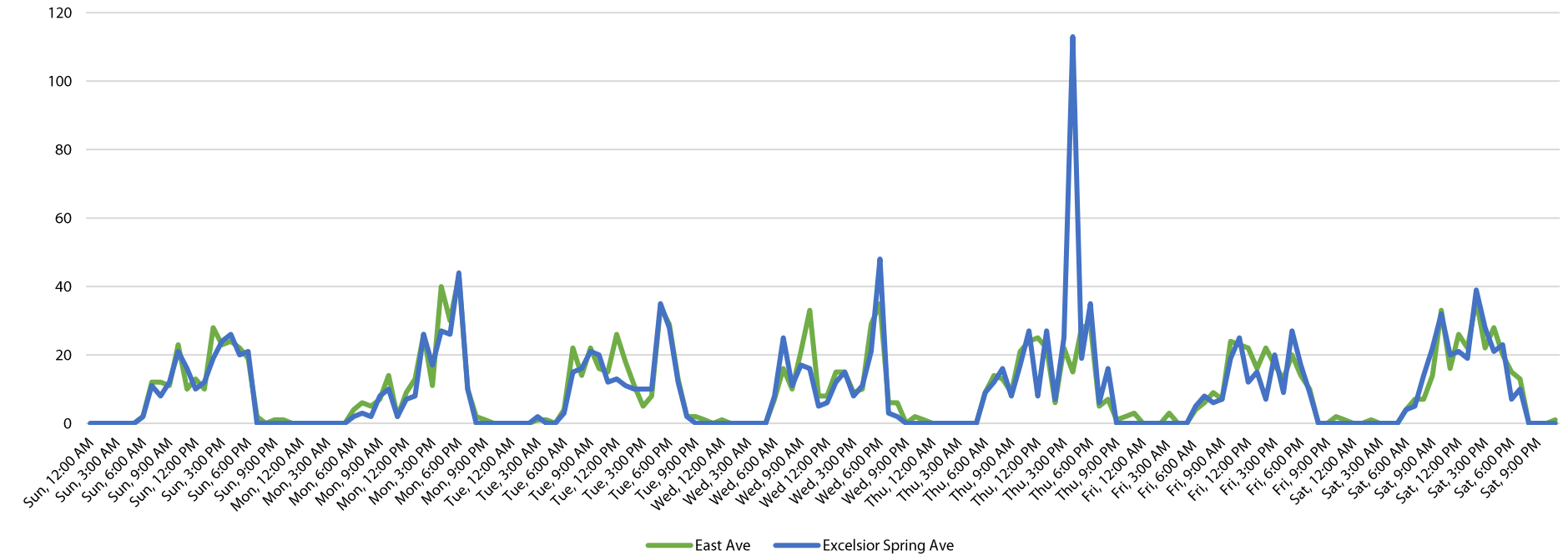
Daily Usage Profile

	East Ave	Excelsior Spring Ave
Average weekday	233	230
Average weekend	239	234
Maximum weekday	Thursday	Thursday
Maximum weekend	Saturday	Saturday
Peak weekday usage	Monday, 5-7 PM	Thursday, 3-5 PM
Peak weekend usage	Saturday, 1-3 PM	Saturday, 2-4 PM

Estimated Monthly Usage		
	East Ave	Excelsior Spring Ave
January	1,925	1,893
February	1,925	1,893
March	4,491	4,417
April	7,057	6,941
May	7,057	6,941
June	7,699	7,572
July	8,340	8,203
August	8,982	8,834
September	7,057	6,941
October	3,849	3,786
November	3,849	3,786
December	1,925	1,893
Annual	64,155	63,102

Usage Gender Split				
	East Ave		Excelsior Spring Ave	
	Female	Male	Female	Male
Bicyclists	7%	13%	2%	11%
Pedestrians	47%	33%	53%	33%
Overall	53%	46%	56%	44%

Hourly Usage



Adjacent Residential Survey Summary

Which of the following most accurately describes how you use your property near the Trail?		
It is my primary residence	6	100.0%
I rent to a tenant, and do not occupy the residence	0	0.0%
It is my second home	0	0.0%
It is unoccupied	0	0.0%
Other	0	0.0%
Where is the trail in relation to your property line?		
The trail runs through my property	0	0.0%
the trail runs along the edge of my property	6	100.0%
The trail is near my property but not touching it	0	0.0%
Don't know	0	0.0%
Approximately how far (in feet) is the rail trail from your house?		
Less than 100 ft.	2	33.3%
100 ft. to 199 ft.	1	16.7%
200 ft. to 499 ft.	2	33.3%
500 ft. or more	1	16.7%
Approximately how large is your property?		
Less than 1/2 acre	0	0.0%
Between 1/2 and 1 acre	2	33.3%
Between 1 and 3 acres	3	50.0%
3 acres or more	1	16.7%

What is the approximate current value of your property?		
Less than \$99,999	0	0.0%
\$100,000-199,999	0	0.0%
\$200,000-299,999	0	0.0%
\$300,000-399,999	2	33.3%
\$400,000-\$499,999	2	33.3%
\$500,000 or more	2	33.3%
How would you describe the setting of your house near the trail?		
Urban	0	0.0%
Suburban	6	100.0%
Rural	0	0.0%
When did you acquire your house?		
After the trail was built	1	16.7%
Before the Trail was built	5	83.3%
Compare your initial reaction to the idea of living near the trail to how you feel about living near the trail today. Would you say that living near the trail is better or worse than you expected it to be?		
Much better	1	16.7%
Better	2	33.3%
Same	3	50.0%
Worse	0	0.0%
Much worse	0	0.0%
Do you feel the trail poses a risk to your own or your family's safety due to the activities of trail users?		
Yes	1	16.7%
No	5	83.3%
No opinion	0	0.0%

If you were to try and sell your property, do you think being near the trail will make it harder or easier to sell?		
Much easier	0	0.0%
Easier	3	50.0%
Same	3	50.0%
Harder	0	0.0%
Much harder	0	0.0%
No answer	0	0.0%
How do you think being located near the trail has affected the resale value of this property?		
Lowered the resale value	0	0.0%
Increased the resale value	3	50.0%
No effect on the resale value	3	50.0%
No opinion	0	0.0%
Overall, how satisfied are you with having the trail as a neighbor?		
Very satisfied	3	50.0%
Satisfied	2	33.3%
Indifferent	1	16.7%
Unsatisfied	0	0.0%
Very unsatisfied	0	0.0%

How do you feel the trail has affected the quality of your neighborhood?		
Highly improved	1	16.7%
Improved	4	66.7%
No impact	0	0.0%
Worsened	1	16.7%
Completely deteriorated	0	0.0%
Do you feel your proximity to the trail has improved your physical activity levels?		
Yes	4	66.7%
No	2	33.3%
Not sure	0	0.0%
Do you feel that the development and management of trail is a good use of public funds?		
Yes	5	83.3%
No	0	0.0%
No opinion	1	16.7%
How often do the members of your household use the trail?		
Daily	2	33.3%
Frequently	2	33.3%
Occasionally	2	33.3%
Rarely	0	0.0%
Never	0	0.0%