

Albany County Helderberg-Hudson Rail-Trail

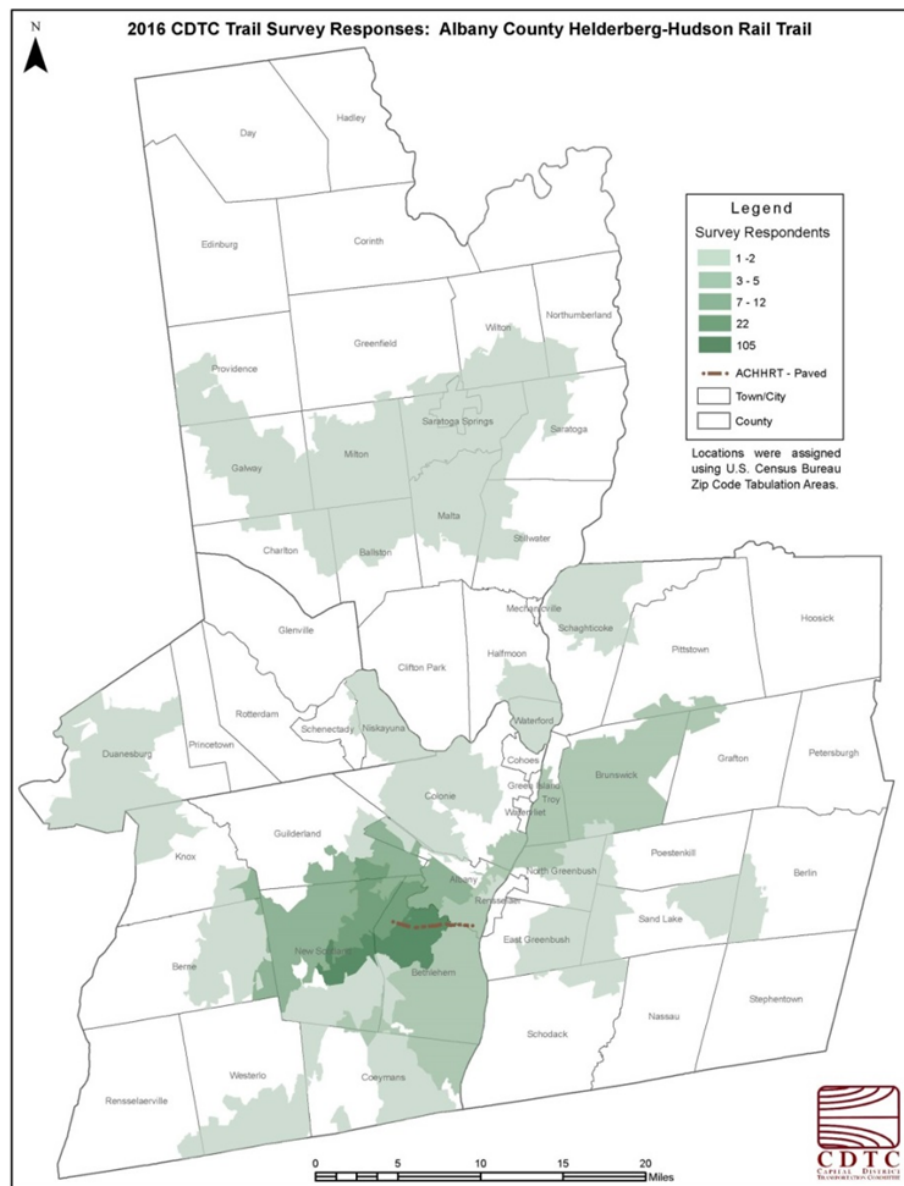
The Albany County Helderberg-Hudson Rail-Trail (ACHHRT) is the newest Capital Region multi-use trail. It is a 9 mile former Delaware and Hudson (D&H) rail corridor between the Port of Albany and Voorheesville. The Regional Trail Perspectives focused on the paved portion of the trail from the Port of Albany to Slingerlands.

Volunteers collected 135 surveys at two locations along the trail and 47 trail users indicated using the ACHHRT on the online survey. Of the 71 surveys mailed to adjacent residential landowners, 20 were returned. The trail attracted users from 41 different area codes with the highest number of users from Delmar, Slingerlands, Voorheesville, and Albany.

The ACHHRT begins in the City of Albany near the Port and Port-related land uses which would be characterized as industrial. It then runs through an isolated, wooded area until it enters the suburban community of Delmar in the Town of Bethlehem. Through Bethlehem it runs adjacent to both residential and retail development. When the trail is completed it will connect to the rural Town of New Scotland and Village of Voorheesville, running adjacent to open space and farmland.

Based on trail counts collected along the trail, the Hudson Avenue trailhead had the 4th highest volume of all 22 locations surveyed during the Summer 2016. There were slightly more males than females counted on the trail and that responded to surveys. Both counts and surveys show more bicyclists than other modes on the trail.

Figure 69. Albany County-Helderberg-Hudson Rail-Trail Users by Zip Code



Albany County Rail Trail

Albany and Bethlehem

Trail length – 9 miles

Estimated Annual Usage

Hudson Ave (Bethlehem)	164,073
S Pearl St (Albany)	66,924

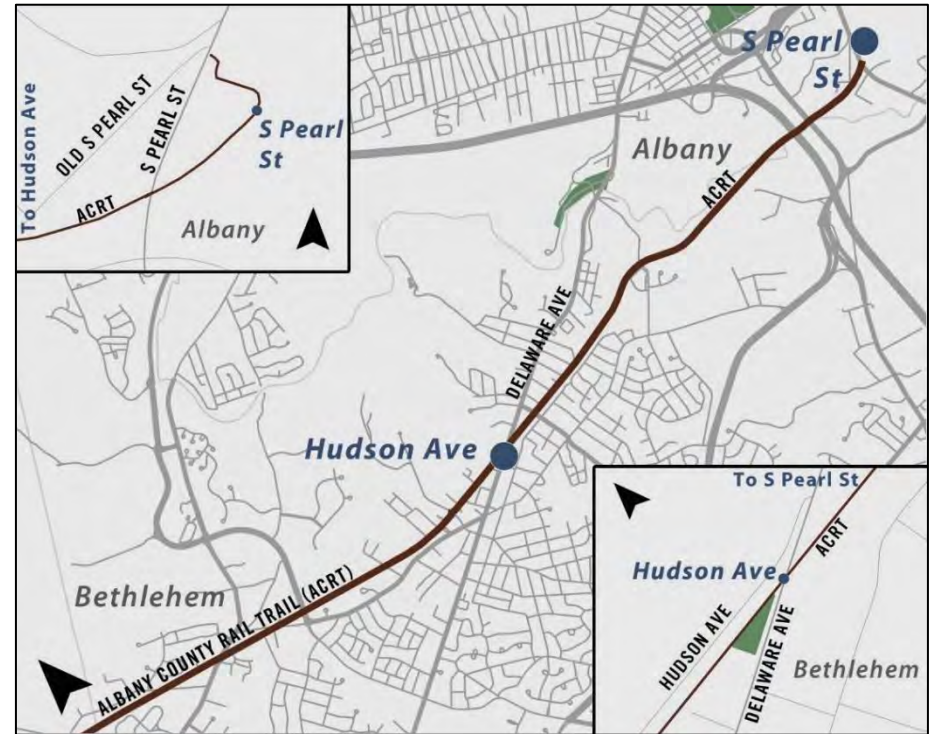
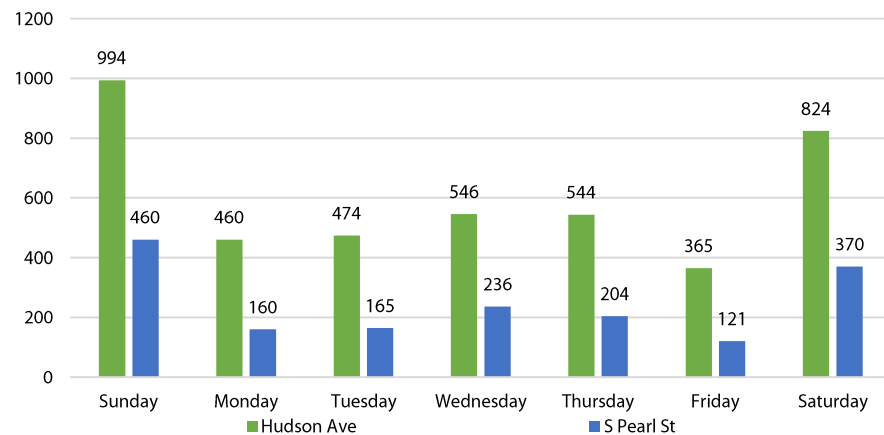
Estimated Seasonal Usage

	Hudson Ave	S Pearl St
Winter	19,164	7,817
Spring	53,078	21,650
Summer	62,889	25,652
Fall	28,942	11,805

Usage Mode Split

	Hudson Ave	S Pearl St
Bicyclists	70%	76%
Pedestrians	29%	22%
Other	2%	2%

Daily Usage



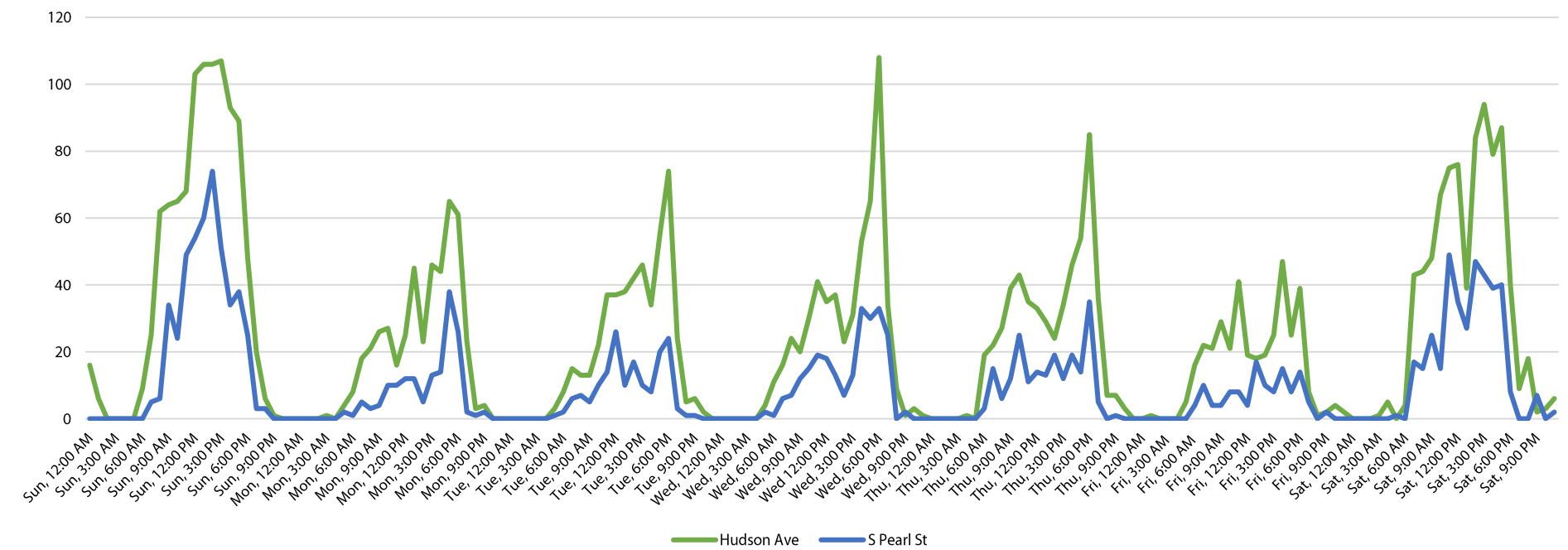
Daily Usage Profile

	Hudson Ave	S Pearl St
Average weekday	478	177
Average weekend	909	415
Maximum weekday	Wednesday	Wednesday
Maximum weekend	Sunday	Sunday
Peak weekday usage	Wednesday, 5-7 PM	Monday, 5-7 PM
Peak weekend usage	Sunday, 2-4 PM	Sunday, 1-3 PM

Estimated Monthly Usage		
	Hudson Ave	S Pearl St
January	4,922	2,008
February	4,922	2,008
March	11,485	4,685
April	18,048	7,362
May	18,048	7,362
June	19,689	8,031
July	21,329	8,700
August	22,970	9,369
September	18,048	7,362
October	9,844	4,015
November	9,844	4,015
December	4,922	2,008
Annual	164,073	66,924

Usage Gender Split				
	Hudson Ave		S Pearl St	
	Female	Male	Female	Male
Bicyclists	33%	38%	29%	49%
Pedestrians	16%	13%	11%	11%
Overall	49%	51%	41%	59%

Hourly Usage

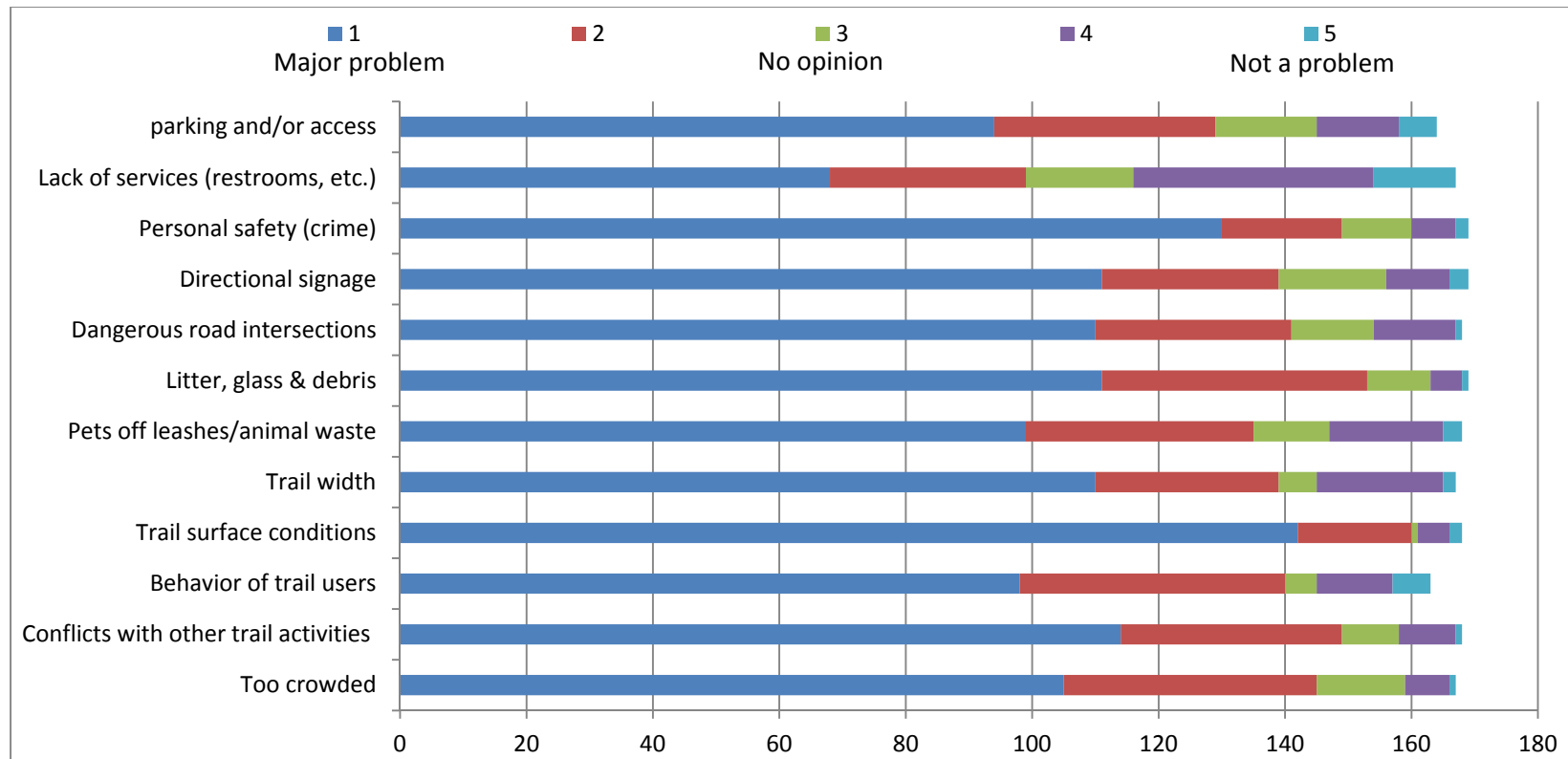


Trail User Survey Summary

Gender		
Male	94	54.34%
Female	77	44.51%
Skipped	2	1.16%
Age		
Under 16	8	4.62%
16-24	20	11.56%
25-44	40	23.12%
45-64	73	42.20%
65 or over	32	18.50%
Skipped	0	0.00%
How did you get to the trail today?		
Drove	47	27.17%
Bicycle	67	38.73%
Walk/Run	51	29.48%
Other	5	2.89%
Skipped	3	1.73%
What activity did you engage in while on the trail today?		
Walking	66	38.15%
Running/Jogging	13	7.51%
Bicycling	100	57.80%
In-line Skating	2	1.16%
Other	4	2.31%
What is your primary purpose for using this trail?		
Recreation	66	38.15%
Health/Exercise	133	76.88%
Commute to school/work	14	8.09%
Other	14	8.09%

About how many times have you used the trail during the past twelve months?		
Less than 5 days	25	14.45%
5-10 days	34	19.65%
11-24 days	34	19.65%
25-49 days	41	23.70%
50-100 days	25	14.45%
More than 100 days	14	8.09%
No answer	0	0.00%
Are there sections of the trail that you avoid due to poor trail conditions or general concerns about trail maintenance?		
Yes	28	16.18%
No	135	78.03%
No answer	10	5.78%
Is your visit to this trail part of an overnight trip away from home?		
Yes	4	2.31%
No	163	94.22%
No answer	6	3.47%
How would you rate your current health status		
Excellent	63	36.42%
Very Good	79	45.66%
Good	28	16.18%
Fair	1	0.58%
Poor	0	0.00%
No answer	2	1.16%

Figure 70. On a scale of 1-5, to what extent do you feel the following items are problems on the Albany County Helderberg-Hudson Rail-Trail?



Adjacent Residential Survey Summary

Which of the following most accurately describes how you use your property near the Trail?		
It is my primary residence	20	100.0%
I rent to a tenant, and do not occupy the residence	0	0.0%
It is my second home	0	0.0%
It is unoccupied	0	0.0%
Other	0	0.0%
Where is the trail in relation to your property line?		
The trail runs through my property	0	0.0%
the trail runs along the edge of my property	15	75.0%
The trail is near my property but not touching it	5	25.0%
Don't know	0	0.0%
Approximately how far (in feet) is the rail trail from your house?		
Less than 100 ft.	10	50.0%
100 ft. to 199 ft.	8	40.0%
200 ft. to 499 ft.	1	5.0%
500 ft. or more	0	0.0%
No answer	1	5.0%
Approximately how large is your property?		
Less than 1/2 acre	11	55.0%
Between 1/2 and 1 acre	8	40.0%
Between 1 and 3 acres	0	0.0%
3 acres or more	1	5.0%

What is the approximate current value of your property?		
Less than \$99,999	0	0.0%
\$100,000-199,999	5	25.0%
\$200,000-299,999	7	35.0%
\$300,000-399,999	6	30.0%
\$400,000-\$499,999	0	0.0%
\$500,000 or more	0	0.0%
No answer	2	10.0%
How would you describe the setting of your house near the trail?		
Urban	1	5.0%
Suburban	18	90.0%
Rural	0	0.0%
No answer	1	5.0%
When did you acquire your house?		
After the trail was built	3	15.0%
Before the Trail was built	17	85.0%
Compare your initial reaction to the idea of living near the trail to how you feel about living near the trail today. Would you say that living near the trail is better or worse than you expected it to be?		
Much better	3	15.0%
Better	6	30.0%
Same	6	30.0%
Worse	2	10.0%
Much worse	2	10.0%
No answer	1	5.0%

Do you feel the trail poses a risk to your own or your family's safety due to the activities of trail users?		
Yes	3	15.0%
No	13	65.0%
No opinion	2	10.0%
No answer	2	10.0%
If you were to try and sell your property, do you think being near the trail will make it harder or easier to sell?		
Much easier	1	5.0%
Easier	5	25.0%
Same	9	45.0%
Harder	4	20.0%
Much harder	1	5.0%
How do you think being located near the trail has affected the resale value of this property?		
Lowered the resale value	2	10.0%
Increased the resale value	3	15.0%
No effect on the resale value	7	35.0%
No opinion	7	35.0%
No answer	1	5.0%
Overall, how satisfied are you with having the trail as a neighbor?		
Very satisfied	7	35.0%
Satisfied	5	25.0%
Indifferent	4	20.0%
Unsatisfied	2	10.0%
Very unsatisfied	2	10.0%

How do you feel the trail has affected the quality of your neighborhood?		
Highly improved	3	15.0%
Improved	9	45.0%
No impact	3	15.0%
Worsened	4	20.0%
Completely deteriorated	0	0.0%
No answer	1	5.0%
Do you feel your proximity to the trail has improved your physical activity levels?		
Yes	11	55.0%
No	6	30.0%
Not sure	2	10.0%
No answer	1	5.0%
Do you feel that the development and management of trail is a good use of public funds?		
Yes	13	65.0%
No	3	15.0%
No opinion	3	15.0%
No answer	1	5.0%
How often do the members of your household use the trail?		
Daily	6	30.0%
Frequently	5	25.0%
Occasionally	4	20.0%
Rarely	3	15.0%
Never	2	10.0%

Figure 71. To what extent do you feel the following items are problems for your household as a result of the trail and its users?

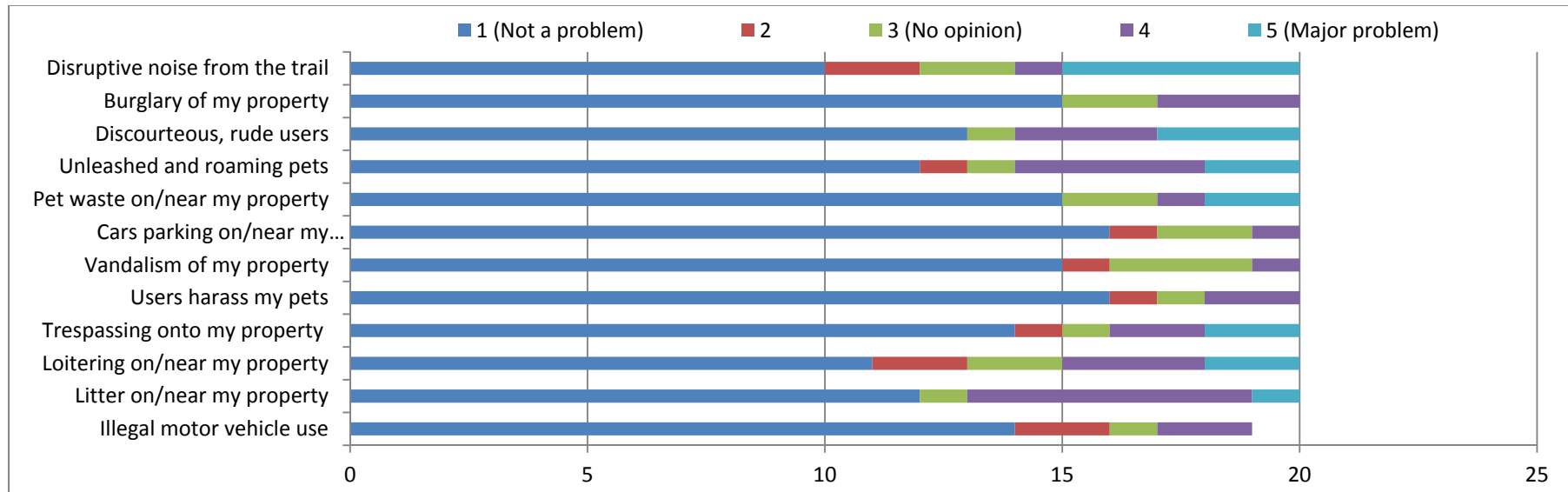


Figure 72. To what extent do you feel that the trail is important in providing the following benefits to the surrounding community?

