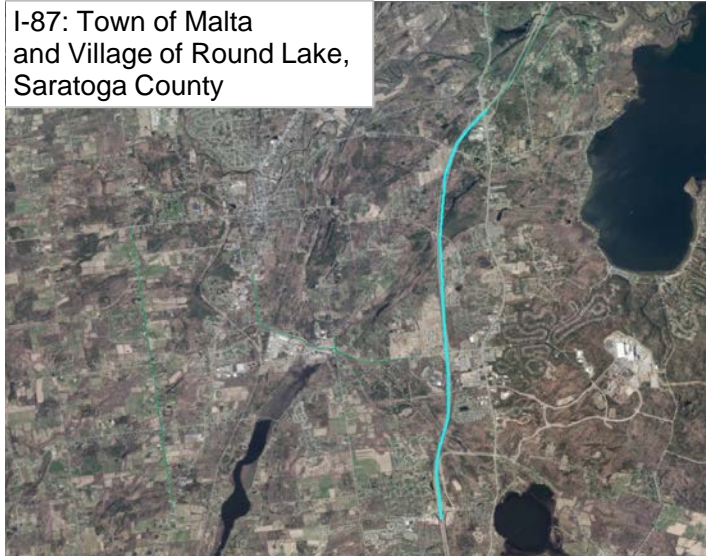


#25 (SA321) I-87 Resurfacing Exits 11-13



Total Score = A+B (100 Points Max)	55.5
---	-------------

A. Benefit/Cost Ratio Total (50 point cap)	44.1
Benefit/Cost Ratio Subtotal	44.1
Total Benefits (\$1,000/Year)	22,959.4
Facility Life	22,192.5
Mobility	0.0
Safety	139.7
User Cost	627.2
Annualized Cost (\$1,000/Year)	521.2

B. Merit Category Score (Scaled to 50 Points)	11.4
--	-------------

CDTC Project Category: Pavement Preservation

Project Limits: Both sides of I-87 from Exit 11 to Exit 13.

Sponsor: NYSDOT

Sponsor Priority: 1 in Pavement Category

Total Cost: \$4.370 M (includes match and inflation)

Existing Pavement Rating: 7

Average Daily Traffic Volume: 69,032

Repair Type: Single Course Mill and Fill

Proposed Project Design Life: 12 years

Detailed Description: Single Course overlay or a Single Course Mill and Fill. Isolated repairs will be incorporated to address areas of deeper distress. Median widths will be reviewed and any clear median less than 72' will have guiderail installed to prevent crossover accidents per update NYSDOT design guidelines for divided highways. In addition, portions of this project have been identified as wet high crash locations and the resurfacing project will reduce this type of accident.

Roadway Functional Classification: I-87 is a National Highway System facility and is classified as an Urban Principal Arterial Interstate.

Federal Fund Source Eligibility: National Highway Preservation Program, Surface Transportation Program, Highway Safety Improvement Program (possibly)

Transportation Considerations:

Walking: N/A. Interstate pavement preservation.

Biking: N/A. Interstate pavement preservation.

Transit: Does not add, upgrade, or remove transit components.

Motor Vehicles/Freight: Project is located on a NYSDOT designated Qualifying and/or Access Highway and the CDTC Freight Priority Network. Project addresses a recommendation from the CDTC Freight Plan (2016); maintain a state-of-good-repair to preserve travel time and/or reliability on the CDTC Freight Priority Network (I-87).

Other Considerations: Overlaps area of a previous unfunded application for the 2016-2021 TIP. 2013-2018: 2 Fatalities

Advisory Committee Comments: None noted.

MERIT CATEGORIES		NUMERIC VALUES		SCORE
COMMUNITY QUALITY OF LIFE & EQUITY (10 POINTS POSSIBLE)				
Land Use Compatability	SCORE	-1 to +3		0
Smart Growth	SCORE	-1 to +3		0
Environmental Justice	SCORE	-1 to +2		0
Accessibility / ADA / Universal Design/Human Services Transport	SCORE	-1 to +2		0
	SUBTOTAL	-4 to +10		0
APPROPRIATE INFRASTRUCTURE (10 POINTS POSSIBLE)				
Preservation/Renewal of Existing	SCORE	-2 to +5		5
Complete Streets	SCORE	-2 to +5		0
	SUBTOTAL	-4 to +10		5
MULTI-MODALISM (10 POINTS POSSIBLE)				
Transit	SCORE	-2 to +5		0
Pedestrian	SCORE	-1 to +3		0
Bicycle	SCORE	-1 to +2		0
	SUBTOTAL	-4 to +10		0
ENVIRONMENT & HEALTH (8 POINTS POSSIBLE)				
Sensitive Area Protection/Mitigation	SCORE	-1 to +2		0
Greenhouse Gas Emissions Reduction	SCORE	-1 to +2		0
Alternative Fuels Support	SCORE	-1 to +2		0
Other Environmental/Health Benefit	SCORE	-1 to +2		0
	SUBTOTAL	-4 to +8		0
REGIONAL BENEFIT (5 POINTS POSSIBLE)				
Benefit beyond project to transportation system or quality region	SCORE	-2 to +5		2
	SUBTOTAL	-2 to +5		2
ECONOMIC DEVELOPMENT (5 POINTS POSSIBLE)				
Economic Impact	SCORE	-2 to +5		4
	SUBTOTAL	-2 to +5		4
SAFETY & SECURITY (5 POINTS POSSIBLE)				
Additional Safety Benefit Beyond Crash History	SCORE	-1 to +3		1
Security and Resiliency to Natural Hazards and Human Caused Events	SCORE	-1 to +2		0
	SUBTOTAL	-2 to +5		1
OPERATIONS & TECHNOLOGY (5 POINTS POSSIBLE)				
Traffic Operations & Reliability Improvements	SCORE	-1 to +3		0
Use of Beneficial Advanced Technologies	SCORE	-1 to +2		0
	SUBTOTAL	-2 to +5		0
FREIGHT (5 POINTS POSSIBLE)				
Freight and Goods Movement	SCORE	-2 to +5		1
	SUBTOTAL	-2 to +5		1
PERFORMANCE (3 POINTS POSSIBLE)				
Anticipated Effect on all Performance Targets	SCORE	-1 to +3		2
	SUBTOTAL	-1 to +3		2
INNOVATION (2 POINTS POSSIBLE)				
Innovative Solutions	SCORE	0 to +2		0
	SUBTOTAL	0 to +2		0
PROJECT DELIVERY (2 POINTS POSSIBLE)				
On Schedule/On Budget	SCORE	-2 to +2		1
	SUBTOTAL	-2 to +2		1
PROJECT MERIT CATEGORY SUB TOTAL				
Total from Line Items Above	SUBTOTAL	-29 to +70		16
Scaled to 50 points				11.4