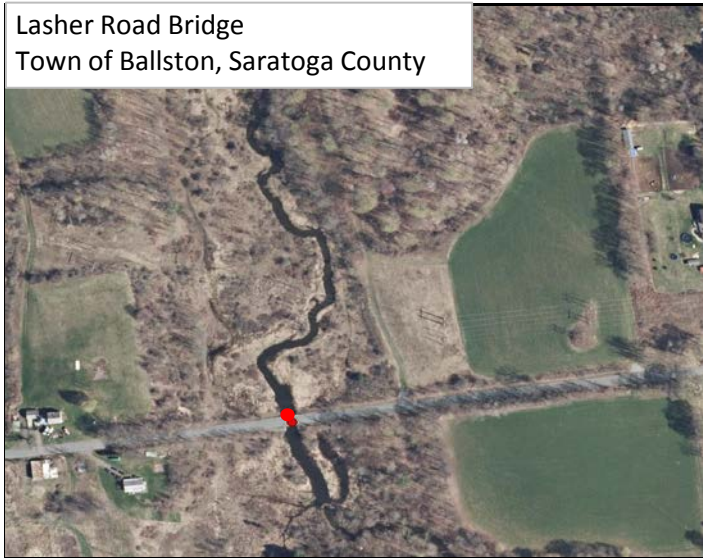


#66 (SA318) Lasher Road Bridge over the Mourning Kill Rehabilitation



Lasher Road Bridge
Town of Ballston, Saratoga County

Total Score = A+B (100 Points Max)	21.0
---	-------------

A. Benefit/Cost Ratio Total (50 point cap)	15.3
Benefit/Cost Ratio Subtotal	15.3
Total Benefits (\$1,000/Year)	889.2
Facility Life	889.2
Mobility	0.0
Safety	0.0
User Cost	0.0
Annualized Cost (\$1,000/Year)	58.3

B. Merit Category Score (Scaled to 50 Points)	5.7
--	------------

CDTC Project Category: Local Low Volume - Bridge Preservation

Sponsor: Saratoga County

Sponsor Priority: 1 in Bridge Category

Total Cost: \$0.851 M (includes match and inflation)

Bridge BIN: 3304700

CDTC Calculated Existing Bridge Rating: 5.1

Bridge Condition: N/A

Proposed Bridge Design Life: 36 years

Detailed Description: Major rehabilitation including removal and replacement of the deck, steel stringers, bearings, backwall and concrete facing on both abutments. The rehabilitation includes new 10' approach slabs on both approaches, retains the existing abutments from the seat to the footing and conducts Class D and Class A concrete repairs as necessary. New standard NYSDOT bridge, transition and approach railing will be included with Type IIA terminations.

Roadway Functional Classification: Lasher Road is not a National Highway System facility and is classified as Rural Local.

Federal Fund Source Eligibility: Surface Transportation Program - Off System Bridge

Transportation Considerations:

Walking: Project does not affect pedestrian infrastructure.

Biking: Project does not affect bicycle infrastructure.

Transit: Does not add, upgrade, or remove transit components

Motor Vehicles/Freight: Roadway traffic volume averages 140 vehicles per day. Project has neutral affect (no known impact, positive or negative) on freight and/or goods movement.

Other Considerations: Identified in Local Bridge study for Item Specific. Project is in an Environmental Justice Area. Rehab would remedy the environmental issue of rust and concrete falling into the Stream.

Advisory Committee Comments: None noted.

MERIT CATEGORIES		NUMERIC VALUES		SCORE
COMMUNITY QUALITY OF LIFE & EQUITY (10 POINTS POSSIBLE)				
Land Use Compatability	SCORE	-1 to +3		0
Smart Growth	SCORE	-1 to +3		0
Environmental Justice	SCORE	-1 to +2		1
Accessibility / ADA / Universal Design/Human Services Transport	SCORE	-1 to +2		0
	SUBTOTAL	-4 to +10		1
APPROPRIATE INFRASTRUCTURE (10 POINTS POSSIBLE)				
Preservation/Renewal of Existing	SCORE	-2 to +5		1
Complete Streets	SCORE	-2 to +5		0
	SUBTOTAL	-4 to +10		1
MULTI-MODALISM (10 POINTS POSSIBLE)				
Transit	SCORE	-2 to +5		0
Pedestrian	SCORE	-1 to +3		0
Bicycle	SCORE	-1 to +2		0
	SUBTOTAL	-4 to +10		0
ENVIRONMENT & HEALTH (8 POINTS POSSIBLE)				
Sensitive Area Protection/Mitigation	SCORE	-1 to +2		1
Greenhouse Gas Emissions Reduction	SCORE	-1 to +2		0
Alternative Fuels Support	SCORE	-1 to +2		0
Other Environmental/Health Benefit	SCORE	-1 to +2		0
	SUBTOTAL	-4 to +8		1
REGIONAL BENEFIT (5 POINTS POSSIBLE)				
Benefit beyond project to transportation system or quality region	SCORE	-2 to +5		0
	SUBTOTAL	-2 to +5		0
ECONOMIC DEVELOPMENT (5 POINTS POSSIBLE)				
Economic Impact	SCORE	-2 to +5		2
	SUBTOTAL	-2 to +5		2
SAFETY & SECURITY (5 POINTS POSSIBLE)				
Additional Safety Benefit Beyond Crash History	SCORE	-1 to +3		1
Security and Resiliency to Natural Hazards and Human Caused Events	SCORE	-1 to +2		0
	SUBTOTAL	-2 to +5		1
OPERATIONS & TECHNOLOGY (5 POINTS POSSIBLE)				
Traffic Operations & Reliability Improvements	SCORE	-1 to +3		0
Use of Beneficial Advanced Technologies	SCORE	-1 to +2		0
	SUBTOTAL	-2 to +5		0
FREIGHT (5 POINTS POSSIBLE)				
Freight and Goods Movement	SCORE	-2 to +5		0
	SUBTOTAL	-2 to +5		0
PERFORMANCE (3 POINTS POSSIBLE)				
Anticipated Effect on all Performance Targets	SCORE	-1 to +3		0
	SUBTOTAL	-1 to +3		0
INNOVATION (2 POINTS POSSIBLE)				
Innovative Solutions	SCORE	0 to +2		0
	SUBTOTAL	0 to +2		0
PROJECT DELIVERY (2 POINTS POSSIBLE)				
On Schedule/On Budget	SCORE	-2 to +2		2
	SUBTOTAL	-2 to +2		2
PROJECT MERIT CATEGORY SUB TOTAL				
Total from Line Items Above	SUBTOTAL	-29 to +70		8
Scaled to 50 points				5.7