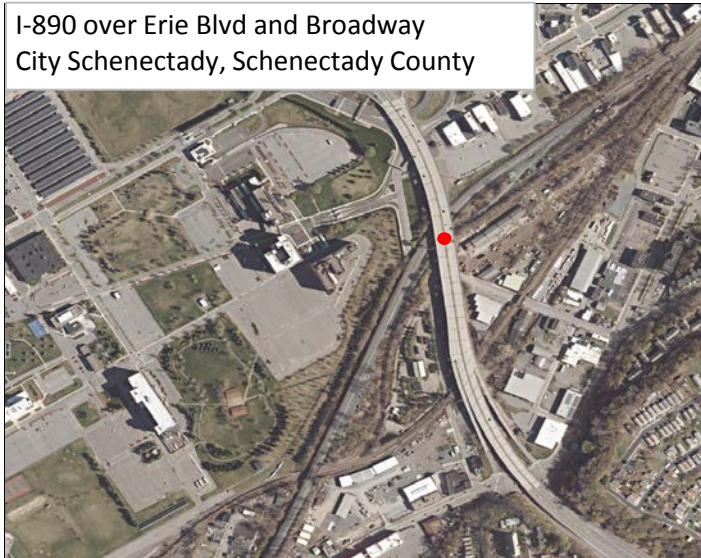


### #32 (S264) I-890 over Erie Blvd and Broadway (Two Bridges) Corrective Maintenance



I-890 over Erie Blvd and Broadway  
City Schenectady, Schenectady County

<b>Total Score = A+B (100 Points Max)</b>	<b>29.6</b>
---	-------------

<b>A. Benefit/Cost Ratio Total (50 point cap)</b>	<b>18.2</b>
Benefit/Cost Ratio Subtotal	18.2
Total Benefits (\$1,000/Year)	17,439.7
Facility Life	17,419.2
Mobility	0.0
Safety	20.5
User Cost	0.0
Annualized Cost (\$1,000/Year)	958.2

<b>B. Merit Category Score (Scaled to 50 Points)</b>	<b>11.4</b>
--	-------------

**CDTC Project Category:** Bridge Preservation

**Sponsor:** NYSDOT

**Sponsor Priority:** 1 in Bridge Category

**Total Cost:** \$13.317 M (includes match and inflation)

**Bridge BIN:** 1049921 & 1049922

**CDTC Calculated Existing Bridge Rating:** 4.2 and 4.5

**Bridge Condition:** Functionally Obsolete (1049921), Structurally Deficient (1049922)

**Proposed Bridge Design Life:** 31

**Detailed Description:** Bridge Preventive/Corrective Maintenance project to extend the life of two bridges utilizing cost effective treatments which may include deck replacement, bearing replacement, joint replacement, rehab primary and secondary members, and rehab piers.

**Roadway Functional Classification:** I-890 is a National Highway System facility and is a Principal Urban Arterial Interstate.

**Federal Fund Source Eligibility:** National Highway Preservation Program, Surface Transportation Program

**Transportation Considerations:**

**Walking:** Project does not affect pedestrian infrastructure.

**Biking:** Project does not affect bicycle infrastructure.

**Transit:** Does not add, upgrade, or remove transit components

**Motor Vehicles/Freight:** Roadway traffic volume averages 46,950 vehicles per day. Project is located on a NYSDOT designated Qualifying and/or Access Highway and the CDTC Freight Priority Network. Project addresses a recommendation from the CDTC Freight Plan (2016); maintain a state-of-good-repair to preserve travel time and/or reliability on the CDTC Freight Priority Network (I-890).

**Other Considerations:** Project maintains existing infrastructure in an Environmental Justice Area. Unfunded PJP from the 2016-2021 TIP.

**Advisory Committee Comments:** Freight - During preliminary design, consider increasing the bridge clearance height over Erie Blvd. This location is a common 'pinch-point' for over-dimension loads. Coordinate design activities with General Electric.

<b>MERIT CATEGORIES</b>		<b>NUMERIC VALUES</b>	<b>SCORE</b>
<b>COMMUNITY QUALITY OF LIFE &amp; EQUITY (10 POINTS POSSIBLE)</b>			
Land Use Compatability	SCORE	-1 to +3	0
Smart Growth	SCORE	-1 to +3	0
Environmental Justice	SCORE	-1 to +2	1
Accessibility / ADA / Universal Design/Human Services Transport	SCORE	-1 to +2	0
	<b>SUBTOTAL</b>	<b>-4 to +10</b>	<b>1</b>
<b>APPROPRIATE INFRASTRUCTURE (10 POINTS POSSIBLE)</b>			
Preservation/Renewal of Existing	SCORE	-2 to +5	5
Complete Streets	SCORE	-2 to +5	0
	<b>SUBTOTAL</b>	<b>-4 to +10</b>	<b>5</b>
<b>MULTI-MODALISM (10 POINTS POSSIBLE)</b>			
Transit	SCORE	-2 to +5	0
Pedestrian	SCORE	-1 to +3	0
Bicycle	SCORE	-1 to +2	0
	<b>SUBTOTAL</b>	<b>-4 to +10</b>	<b>0</b>
<b>ENVIRONMENT &amp; HEALTH (8 POINTS POSSIBLE)</b>			
Sensitive Area Protection/Mitigation	SCORE	-1 to +2	0
Greenhouse Gas Emissions Reduction	SCORE	-1 to +2	0
Alternative Fuels Support	SCORE	-1 to +2	0
Other Environmental/Health Benefit	SCORE	-1 to +2	0
	<b>SUBTOTAL</b>	<b>-4 to +8</b>	<b>0</b>
<b>REGIONAL BENEFIT (5 POINTS POSSIBLE)</b>			
Benefit beyond project to transportation system or quality region	SCORE	-2 to +5	2
	<b>SUBTOTAL</b>	<b>-2 to +5</b>	<b>2</b>
<b>ECONOMIC DEVELOPMENT (5 POINTS POSSIBLE)</b>			
Economic Impact	SCORE	-2 to +5	4
	<b>SUBTOTAL</b>	<b>-2 to +5</b>	<b>4</b>
<b>SAFETY &amp; SECURITY (5 POINTS POSSIBLE)</b>			
Additional Safety Benefit Beyond Crash History	SCORE	-1 to +3	0
Security and Resiliency to Natural Hazards and Human Caused Events	SCORE	-1 to +2	0
	<b>SUBTOTAL</b>	<b>-2 to +5</b>	<b>0</b>
<b>OPERATIONS &amp; TECHNOLOGY (5 POINTS POSSIBLE)</b>			
Traffic Operations & Reliability Improvements	SCORE	-1 to +3	0
Use of Beneficial Advanced Technologies	SCORE	-1 to +2	0
	<b>SUBTOTAL</b>	<b>-2 to +5</b>	<b>0</b>
<b>FREIGHT (5 POINTS POSSIBLE)</b>			
Freight and Goods Movement	SCORE	-2 to +5	1
	<b>SUBTOTAL</b>	<b>-2 to +5</b>	<b>1</b>
<b>PERFORMANCE (3 POINTS POSSIBLE)</b>			
Anticipated Effect on all Performance Targets	SCORE	-1 to +3	2
	<b>SUBTOTAL</b>	<b>-1 to +3</b>	<b>2</b>
<b>INNOVATION (2 POINTS POSSIBLE)</b>			
Innovative Solutions	SCORE	0 to +2	0
	<b>SUBTOTAL</b>	<b>0 to +2</b>	<b>0</b>
<b>PROJECT DELIVERY (2 POINTS POSSIBLE)</b>			
On Schedule/On Budget	SCORE	-2 to +2	1
	<b>SUBTOTAL</b>	<b>-2 to +2</b>	<b>1</b>
<b>PROJECT MERIT CATEGORY SUB TOTAL</b>			
Total from Line Items Above	<b>SUBTOTAL</b>	<b>-29 to +70</b>	<b>16</b>
Scaled to 50 points			<b>11.4</b>