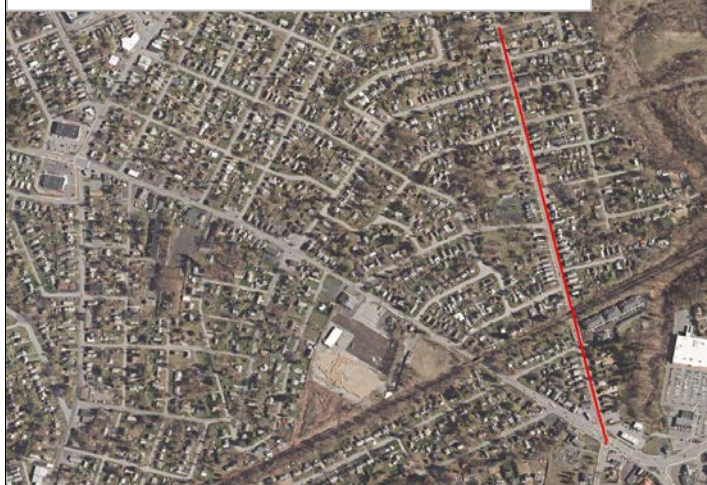


#71 (S262) Helderberg Avenue Pavement Preservation Project

Helderberg Avenue
Town of Rotterdam, Schenectady County



CDTC Project Category: Pavement Preservation

Project Limits: Curry Road (State Route 7) to
Schenectady City Line (near Amelia Street)

Sponsor: Schenectady County

Sponsor Priority: 2 in Pavement Category

Total Cost: \$0.718 M (includes match and inflation)

Total Score = A+B (100 Points Max)	60.5
---	-------------

A. Benefit/Cost Ratio Total (50 point cap)	46.2
---	-------------

Benefit/Cost Ratio Subtotal	46.2
Total Benefits (\$1,000/Year)	2,103.9
Facility Life	2,059.7
Mobility	0.0
Safety	36.8
User Cost	7.4
Annualized Cost (\$1,000/Year)	45.5

B. Merit Category Score (Scaled to 50 Points)	14.3
--	-------------

Existing Pavement Rating: 7

Average Daily Traffic Volume: 7,944

Repair Type: Cold Mill and 2" Hot Mix Asphalt Overlay

Proposed Project Design Life: 50 years

Detailed Description: Cold mill the existing travel lanes and shoulders and replace with a 2 inch asphalt overlay, replace approximately 650 linear feet of 4 foot wide asphalt sidewalk with 5 foot wide concrete sidewalk, install approximately 200 feet of new sidewalk, repair an additional 100 lineal feet of sidewalk, install 28 ADA curb ramps, improve the pavement markings as well as update current signage where needed.

Roadway Functional Classification: Helderberg Avenue is not on a National Highway System facility and is classified as an Urban Major Collector road.

Federal Fund Source Eligibility: Surface Transportation Program

Transportation Considerations:

Walking: In CDTC Tier 1 Pedestrian District. Improves and adds new sidewalk and ADA ramps which will improve accessibility and safety for pedestrians.

Biking: Connects to CDTC Bicycle Network. No bicycle infrastructure improvements.

Transit: Not on CDTC Transit Priority Network but on a transit route and adds a transit component (sidewalks).

Motor Vehicles/Freight: Project has neutral affect (no known impact, positive or negative) on freight and/or goods movement.

Other Considerations: Project connects to an Environmental Justice Area. Connects to a National Highway System route.

Advisory Committee Comments: None noted.

MERIT CATEGORIES		NUMERIC VALUES	SCORE
COMMUNITY QUALITY OF LIFE & EQUITY (10 POINTS POSSIBLE)			
Land Use Compatability	SCORE	-1 to +3	0
Smart Growth	SCORE	-1 to +3	2
Environmental Justice	SCORE	-1 to +2	2
Accessibility / ADA / Universal Design/Human Services Transport	SCORE	-1 to +2	1
	SUBTOTAL	-4 to +10	5
APPROPRIATE INFRASTRUCTURE (10 POINTS POSSIBLE)			
Preservation/Renewal of Existing	SCORE	-2 to +5	2
Complete Streets	SCORE	-2 to +5	1
	SUBTOTAL	-4 to +10	3
MULTI-MODALISM (10 POINTS POSSIBLE)			
Transit	SCORE	-2 to +5	2
Pedestrian	SCORE	-1 to +3	3
Bicycle	SCORE	-1 to +2	0
	SUBTOTAL	-4 to +10	5
ENVIRONMENT & HEALTH (8 POINTS POSSIBLE)			
Sensitive Area Protection/Mitigation	SCORE	-1 to +2	0
Greenhouse Gas Emissions Reduction	SCORE	-1 to +2	1
Alternative Fuels Support	SCORE	-1 to +2	0
Other Environmental/Health Benefit	SCORE	-1 to +2	0
	SUBTOTAL	-4 to +8	1
REGIONAL BENEFIT (5 POINTS POSSIBLE)			
Benefit beyond project to transportation system or quality region	SCORE	-2 to +5	0
	SUBTOTAL	-2 to +5	0
ECONOMIC DEVELOPMENT (5 POINTS POSSIBLE)			
Economic Impact	SCORE	-2 to +5	3
	SUBTOTAL	-2 to +5	3
SAFETY & SECURITY (5 POINTS POSSIBLE)			
Additional Safety Benefit Beyond Crash History	SCORE	-1 to +3	2
Security and Resiliency to Natural Hazards and Human Caused Events	SCORE	-1 to +2	0
	SUBTOTAL	-2 to +5	2
OPERATIONS & TECHNOLOGY (5 POINTS POSSIBLE)			
Traffic Operations & Reliability Improvements	SCORE	-1 to +3	0
Use of Beneficial Advanced Technologies	SCORE	-1 to +2	0
	SUBTOTAL	-2 to +5	0
FREIGHT (5 POINTS POSSIBLE)			
Freight and Goods Movement	SCORE	-2 to +5	0
	SUBTOTAL	-2 to +5	0
PERFORMANCE (3 POINTS POSSIBLE)			
Anticipated Effect on all Performance Targets	SCORE	-1 to +3	2
	SUBTOTAL	-1 to +3	2
INNOVATION (2 POINTS POSSIBLE)			
Innovative Solutions	SCORE	0 to +2	0
	SUBTOTAL	0 to +2	0
PROJECT DELIVERY (2 POINTS POSSIBLE)			
On Schedule/On Budget	SCORE	-2 to +2	-1
	SUBTOTAL	-2 to +2	-1
PROJECT MERIT CATEGORY SUB TOTAL			
Total from Line Items Above	SUBTOTAL	-29 to +70	20
Scaled to 50 points			14.3