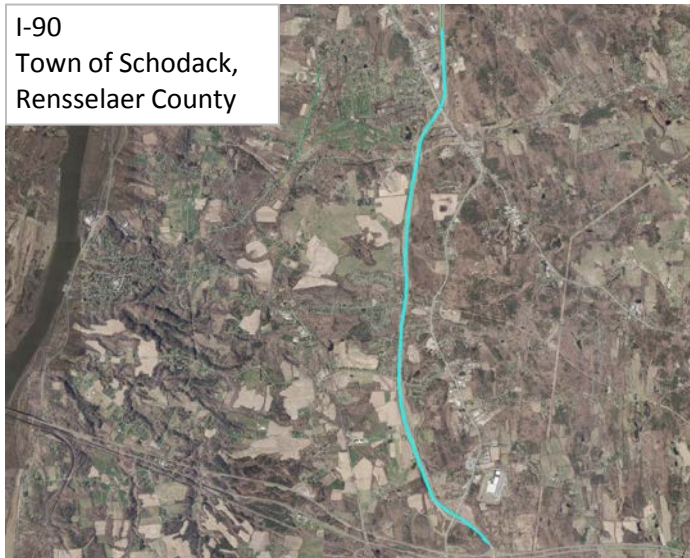


### #28 (R341) I-90 Pavement Corrective Maintenance Exit 10.5 (at Kraft Road) to NYS Thruway



<b>Total Score = A+B (100 Points Max)</b>	<b>17.2</b>
---	-------------

<b>A. Benefit/Cost Ratio Total (50 point cap)</b>	<b>5.8</b>
Benefit/Cost Ratio Subtotal	5.8
Total Benefits (\$1,000/Year)	5,268.8
Facility Life	5,017.1
Mobility	0.0
Safety	43.2
User Cost	208.5
Annualized Cost (\$1,000/Year)	911.4

<b>B. Merit Category Score (Scaled to 50 Points)</b>	<b>11.4</b>
--	-------------

**CDTC Project Category:** Pavement Preservation

**Project Limits:** Both sides of I-90 from Exit 10.5 (near Kraft Road) to the NYS Thruway.

**Sponsor:** NYSDOT

**Sponsor Priority:** 3 in Pavement Category

**Total Cost:** \$7.641 M (includes match and inflation)

**Existing Pavement Rating:** 7

**Average Daily Traffic Volume:** 21,836

**Repair Type:** Single Course Mill and Fill

**Proposed Project Design Life:** 12 years

**Detailed Description:** Single Course overlay or a Single Course Mill and Fill. Isolated repairs will be incorporated to address areas of deeper distress. Median widths will be reviewed and any clear median less than 72' will have guiderail installed to prevent crossover accidents per update NYSDOT design guidelines for divided highways.

**Roadway Functional Classification:** I-90 is a National Highway System facility and is classified as an Urban and Rural Principal Arterial Interstate.

**Federal Fund Source Eligibility:** National Highway Preservation Program, Surface Transportation Program

**Transportation Considerations:**

**Walking:** N/A. Interstate pavement preservation.

**Biking:** N/A. Interstate pavement preservation.

**Transit:** Does not add, upgrade, or remove transit components.

**Motor Vehicles/Freight:** Project is located on a NYSDOT designated Qualifying and/or Access Highway and the CDTC Freight Priority Network. Project addresses a recommendation from the CDTC Freight Plan (2016); maintain a state-of-good-repair to preserve travel time and/or reliability on the CDTC Freight Priority Network (I-90).

**Other Considerations:** 2013-2018: 0 Fatalities, 1 Serious Injury.

**Advisory Committee Comments:** None noted.

<b>MERIT CATEGORIES</b>		<b>NUMERIC VALUES</b>		<b>SCORE</b>
<b>COMMUNITY QUALITY OF LIFE &amp; EQUITY (10 POINTS POSSIBLE)</b>				
Land Use Compatability	SCORE	-1 to +3		0
Smart Growth	SCORE	-1 to +3		0
Environmental Justice	SCORE	-1 to +2		0
Accessibility / ADA / Universal Design/Human Services Transport	SCORE	-1 to +2		0
	<b>SUBTOTAL</b>	<b>-4 to +10</b>		<b>0</b>
<b>APPROPRIATE INFRASTRUCTURE (10 POINTS POSSIBLE)</b>				
Preservation/Renewal of Existing	SCORE	-2 to +5		5
Complete Streets	SCORE	-2 to +5		0
	<b>SUBTOTAL</b>	<b>-4 to +10</b>		<b>5</b>
<b>MULTI-MODALISM (10 POINTS POSSIBLE)</b>				
Transit	SCORE	-2 to +5		0
Pedestrian	SCORE	-1 to +3		0
Bicycle	SCORE	-1 to +2		0
	<b>SUBTOTAL</b>	<b>-4 to +10</b>		<b>0</b>
<b>ENVIRONMENT &amp; HEALTH (8 POINTS POSSIBLE)</b>				
Sensitive Area Protection/Mitigation	SCORE	-1 to +2		0
Greenhouse Gas Emissions Reduction	SCORE	-1 to +2		0
Alternative Fuels Support	SCORE	-1 to +2		0
Other Environmental/Health Benefit	SCORE	-1 to +2		0
	<b>SUBTOTAL</b>	<b>-4 to +8</b>		<b>0</b>
<b>REGIONAL BENEFIT (5 POINTS POSSIBLE)</b>				
Benefit beyond project to transportation system or quality region	SCORE	-2 to +5		2
	<b>SUBTOTAL</b>	<b>-2 to +5</b>		<b>2</b>
<b>ECONOMIC DEVELOPMENT (5 POINTS POSSIBLE)</b>				
Economic Impact	SCORE	-2 to +5		4
	<b>SUBTOTAL</b>	<b>-2 to +5</b>		<b>4</b>
<b>SAFETY &amp; SECURITY (5 POINTS POSSIBLE)</b>				
Additional Safety Benefit Beyond Crash History	SCORE	-1 to +3		1
Security and Resiliency to Natural Hazards and Human Caused Events	SCORE	-1 to +2		0
	<b>SUBTOTAL</b>	<b>-2 to +5</b>		<b>1</b>
<b>OPERATIONS &amp; TECHNOLOGY (5 POINTS POSSIBLE)</b>				
Traffic Operations & Reliability Improvements	SCORE	-1 to +3		0
Use of Beneficial Advanced Technologies	SCORE	-1 to +2		0
	<b>SUBTOTAL</b>	<b>-2 to +5</b>		<b>0</b>
<b>FREIGHT (5 POINTS POSSIBLE)</b>				
Freight and Goods Movement	SCORE	-2 to +5		1
	<b>SUBTOTAL</b>	<b>-2 to +5</b>		<b>1</b>
<b>PERFORMANCE (3 POINTS POSSIBLE)</b>				
Anticipated Effect on all Performance Targets	SCORE	-1 to +3		2
	<b>SUBTOTAL</b>	<b>-1 to +3</b>		<b>2</b>
<b>INNOVATION (2 POINTS POSSIBLE)</b>				
Innovative Solutions	SCORE	0 to +2		0
	<b>SUBTOTAL</b>	<b>0 to +2</b>		<b>0</b>
<b>PROJECT DELIVERY (2 POINTS POSSIBLE)</b>				
On Schedule/On Budget	SCORE	-2 to +2		1
	<b>SUBTOTAL</b>	<b>-2 to +2</b>		<b>1</b>
<b>PROJECT MERIT CATEGORY SUB TOTAL</b>				
Total from Line Items Above	<b>SUBTOTAL</b>	<b>-29 to +70</b>		<b>16</b>
Scaled to 50 points				<b>11.4</b>