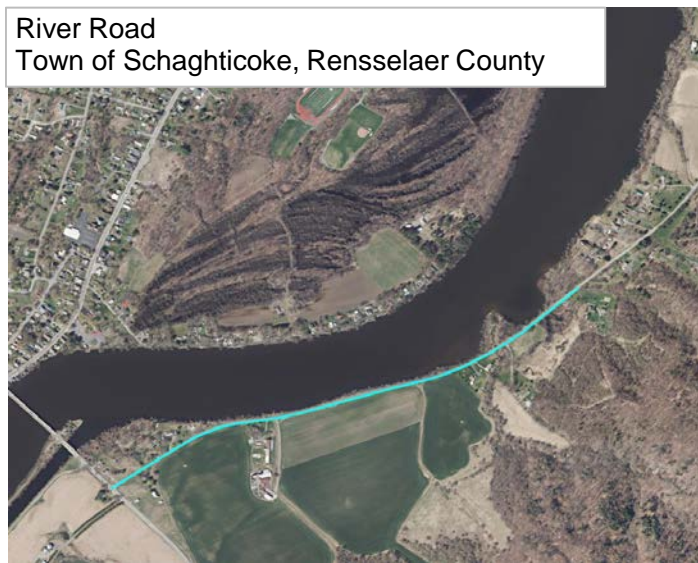


#59 (R336) River Road (CR 120) Pavement Preservation



| | |
|---|-------------|
| Total Score = A+B (100 Points Max) | 53.6 |
|---|-------------|

| | |
|---|-------------|
| A. Benefit/Cost Ratio Total (50 point cap) | 50.0 |
| Benefit/Cost Ratio Subtotal | 92.0 |
| Total Benefits (\$1,000/Year) | 1,872.3 |
| Facility Life | 1,866.5 |
| Mobility | 0.0 |
| Safety | 1.6 |
| User Cost | 4.2 |
| Annualized Cost (\$1,000/Year) | 20.4 |

| | |
|--|------------|
| B. Merit Category Score (Scaled to 50 Points) | 3.6 |
|--|------------|

CDTC Project Category: Local Low Volume - Pavement Preservation

Project Limits: County Route 125 to Washington County line

Sponsor: Rensselaer County

Sponsor Priority: 8 in Pavement Category

Total Cost: \$0.150 M (includes match and inflation)

Existing Pavement Rating: 5

Average Daily Traffic Volume: 989

Repair Type: 1 1/2" Hot Mix Asphalt Overlay

Proposed Project Design Life: 10 years

Detailed Description: Preserve the pavement using a 1 1/2" Hot Mix Asphalt Overlay.

Roadway Functional Classification: River Road is not a National Highway System facility and is classified as an Urban Minor Collector road.

Federal Fund Source Eligibility: Surface Transportation Program

Transportation Considerations:

Walking: Not in a CDTC Pedestrian District and makes no commitment to pedestrian facilities.

Biking: Not on CDTC Bicycle Network. No bicycle infrastructure improvements.

Transit: Does not add, upgrade, or remove transit components.

Motor Vehicles/Freight: Project has neutral affect (no known impact, positive or negative) on freight and/or goods movement.

Other Considerations: Project will be designed by the sponsor for a maximum amount payable (preliminary and final design) of \$4,000. Construction Inspection services will be solicited.

Advisory Committee Comments: None noted.

| MERIT CATEGORIES | | NUMERIC VALUES | | SCORE |
|--|-----------------|-----------------------|--|--------------|
| COMMUNITY QUALITY OF LIFE & EQUITY (10 POINTS POSSIBLE) | | | | |
| Land Use Compatability | SCORE | -1 to +3 | | 0 |
| Smart Growth | SCORE | -1 to +3 | | 0 |
| Environmental Justice | SCORE | -1 to +2 | | 0 |
| Accessibility / ADA / Universal Design/Human Services Transport | SCORE | -1 to +2 | | 0 |
| | SUBTOTAL | -4 to +10 | | 0 |
| APPROPRIATE INFRASTRUCTURE (10 POINTS POSSIBLE) | | | | |
| Preservation/Renewal of Existing | SCORE | -2 to +5 | | 1 |
| Complete Streets | SCORE | -2 to +5 | | 0 |
| | SUBTOTAL | -4 to +10 | | 1 |
| MULTI-MODALISM (10 POINTS POSSIBLE) | | | | |
| Transit | SCORE | -2 to +5 | | 0 |
| Pedestrian | SCORE | -1 to +3 | | 0 |
| Bicycle | SCORE | -1 to +2 | | 0 |
| | SUBTOTAL | -4 to +10 | | 0 |
| ENVIRONMENT & HEALTH (8 POINTS POSSIBLE) | | | | |
| Sensitive Area Protection/Mitigation | SCORE | -1 to +2 | | 0 |
| Greenhouse Gas Emissions Reduction | SCORE | -1 to +2 | | 0 |
| Alternative Fuels Support | SCORE | -1 to +2 | | 0 |
| Other Environmental/Health Benefit | SCORE | -1 to +2 | | 0 |
| | SUBTOTAL | -4 to +8 | | 0 |
| REGIONAL BENEFIT (5 POINTS POSSIBLE) | | | | |
| Benefit beyond project to transportation system or quality region | SCORE | -2 to +5 | | 0 |
| | SUBTOTAL | -2 to +5 | | 0 |
| ECONOMIC DEVELOPMENT (5 POINTS POSSIBLE) | | | | |
| Economic Impact | SCORE | -2 to +5 | | 2 |
| | SUBTOTAL | -2 to +5 | | 2 |
| SAFETY & SECURITY (5 POINTS POSSIBLE) | | | | |
| Additional Safety Benefit Beyond Crash History | SCORE | -1 to +3 | | 0 |
| Security and Resiliency to Natural Hazards and Human Caused Events | SCORE | -1 to +2 | | 0 |
| | SUBTOTAL | -2 to +5 | | 0 |
| OPERATIONS & TECHNOLOGY (5 POINTS POSSIBLE) | | | | |
| Traffic Operations & Reliability Improvements | SCORE | -1 to +3 | | 0 |
| Use of Beneficial Advanced Technologies | SCORE | -1 to +2 | | 0 |
| | SUBTOTAL | -2 to +5 | | 0 |
| FREIGHT (5 POINTS POSSIBLE) | | | | |
| Freight and Goods Movement | SCORE | -2 to +5 | | 0 |
| | SUBTOTAL | -2 to +5 | | 0 |
| PERFORMANCE (3 POINTS POSSIBLE) | | | | |
| Anticipated Effect on all Performance Targets | SCORE | -1 to +3 | | 0 |
| | SUBTOTAL | -1 to +3 | | 0 |
| INNOVATION (2 POINTS POSSIBLE) | | | | |
| Innovative Solutions | SCORE | 0 to +2 | | 0 |
| | SUBTOTAL | 0 to +2 | | 0 |
| PROJECT DELIVERY (2 POINTS POSSIBLE) | | | | |
| On Schedule/On Budget | SCORE | -2 to +2 | | 2 |
| | SUBTOTAL | -2 to +2 | | 2 |
| PROJECT MERIT CATEGORY SUB TOTAL | | | | |
| Total from Line Items Above | SUBTOTAL | -29 to +70 | | 5 |
| Scaled to 50 points | | | | 3.6 |