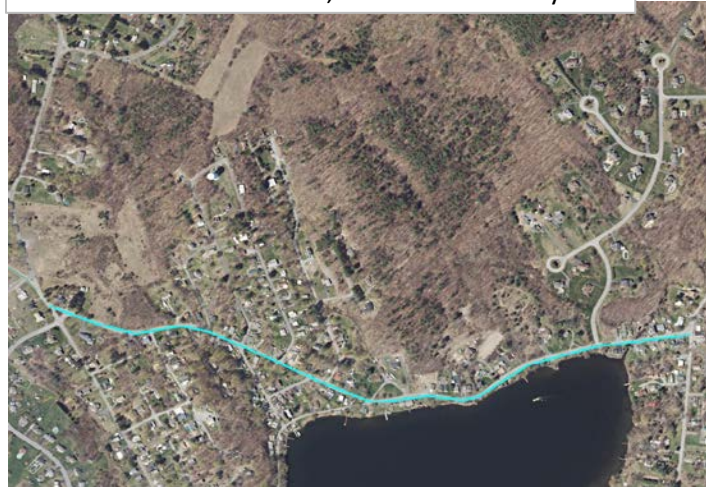


#58 (R335) Pershing Avenue (CR 68) Pavement Preservation

Pershing Avenue
Town of North Greenbush, Rensselaer County



CDTC Project Category: Local Low Volume - Pavement Preservation

Project Limits: Troy Avenue to Peck Road

Sponsor: Rensselaer County

Sponsor Priority: 2 in Pavement Category

Total Cost: \$0.238 M (includes match and inflation)

Total Score = A+B (100 Points Max)	54.3
---	-------------

A. Benefit/Cost Ratio Total (50 point cap)	50.0
Benefit/Cost Ratio Subtotal	76.8
Total Benefits (\$1,000/Year)	2,485.8
Facility Life	2,476.4
Mobility	0.0
Safety	1.6
User Cost	7.8
Annualized Cost (\$1,000/Year)	32.4

B. Merit Category Score (Scaled to 50 Points)	4.3
--	------------

Existing Pavement Rating: 5

Average Daily Traffic Volume: 1,918

Repair Type: 1 1/2" Hot Mix Asphalt Overlay

Proposed Project Design Life: 10 years

Detailed Description: Heater scarification of Hot Mix Asphalt and 1 1/2" Hot Mix Asphalt Overlay

Roadway Functional Classification: Pershing Road is not a National Highway System facility and is classified as an Urban Major Collector road.

Federal Fund Source Eligibility: Surface Transportation Program

Transportation Considerations:

Walking: Not in a CDTC Pedestrian District and makes no commitment to pedestrian facilities.

Biking: Not on CDTC Bicycle Network. No bicycle infrastructure improvements.

Transit: Does not add, upgrade, or remove transit components.

Motor Vehicles/Freight: Project has neutral affect (no known impact, positive or negative) on freight and/or goods movement.

Other Considerations: Low traffic volume. Project will be designed by the sponsor for a maximum amount payable (preliminary and final design) of \$4,000. Construction Inspection services will be solicited.

Advisory Committee Comments: None noted.

MERIT CATEGORIES		NUMERIC VALUES		SCORE
COMMUNITY QUALITY OF LIFE & EQUITY (10 POINTS POSSIBLE)				
Land Use Compatability	SCORE	-1 to +3		0
Smart Growth	SCORE	-1 to +3		0
Environmental Justice	SCORE	-1 to +2		1
Accessibility / ADA / Universal Design/Human Services Transport	SCORE	-1 to +2		0
	SUBTOTAL	-4 to +10		1
APPROPRIATE INFRASTRUCTURE (10 POINTS POSSIBLE)				
Preservation/Renewal of Existing	SCORE	-2 to +5		1
Complete Streets	SCORE	-2 to +5		0
	SUBTOTAL	-4 to +10		1
MULTI-MODALISM (10 POINTS POSSIBLE)				
Transit	SCORE	-2 to +5		0
Pedestrian	SCORE	-1 to +3		0
Bicycle	SCORE	-1 to +2		0
	SUBTOTAL	-4 to +10		0
ENVIRONMENT & HEALTH (8 POINTS POSSIBLE)				
Sensitive Area Protection/Mitigation	SCORE	-1 to +2		0
Greenhouse Gas Emissions Reduction	SCORE	-1 to +2		0
Alternative Fuels Support	SCORE	-1 to +2		0
Other Environmental/Health Benefit	SCORE	-1 to +2		0
	SUBTOTAL	-4 to +8		0
REGIONAL BENEFIT (5 POINTS POSSIBLE)				
Benefit beyond project to transportation system or quality region	SCORE	-2 to +5		0
	SUBTOTAL	-2 to +5		0
ECONOMIC DEVELOPMENT (5 POINTS POSSIBLE)				
Economic Impact	SCORE	-2 to +5		2
	SUBTOTAL	-2 to +5		2
SAFETY & SECURITY (5 POINTS POSSIBLE)				
Additional Safety Benefit Beyond Crash History	SCORE	-1 to +3		0
Security and Resiliency to Natural Hazards and Human Caused Events	SCORE	-1 to +2		0
	SUBTOTAL	-2 to +5		0
OPERATIONS & TECHNOLOGY (5 POINTS POSSIBLE)				
Traffic Operations & Reliability Improvements	SCORE	-1 to +3		0
Use of Beneficial Advanced Technologies	SCORE	-1 to +2		0
	SUBTOTAL	-2 to +5		0
FREIGHT (5 POINTS POSSIBLE)				
Freight and Goods Movement	SCORE	-2 to +5		0
	SUBTOTAL	-2 to +5		0
PERFORMANCE (3 POINTS POSSIBLE)				
Anticipated Effect on all Performance Targets	SCORE	-1 to +3		0
	SUBTOTAL	-1 to +3		0
INNOVATION (2 POINTS POSSIBLE)				
Innovative Solutions	SCORE	0 to +2		0
	SUBTOTAL	0 to +2		0
PROJECT DELIVERY (2 POINTS POSSIBLE)				
On Schedule/On Budget	SCORE	-2 to +2		2
	SUBTOTAL	-2 to +2		2
PROJECT MERIT CATEGORY SUB TOTAL				
Total from Line Items Above	SUBTOTAL	-29 to +70		6
Scaled to 50 points				4.3