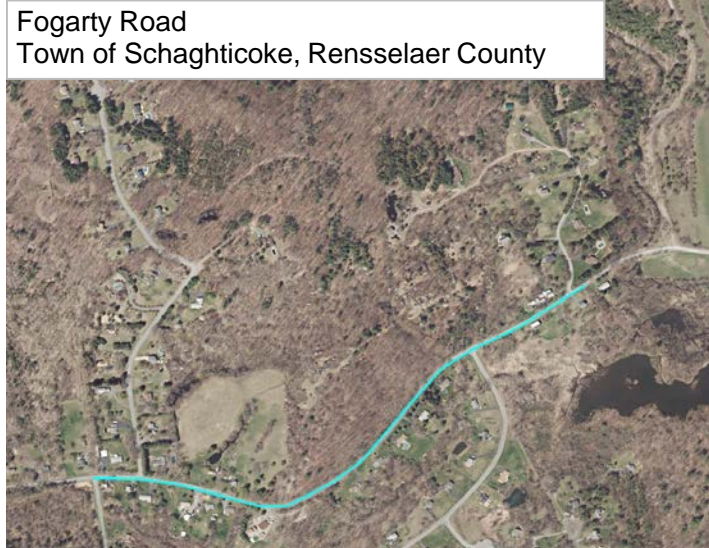


#57 (R334) Fogarty Road (CR 126) Pavement Preservation

Total Score = A+B (100 Points Max)	53.6
---	-------------

A. Benefit/Cost Ratio Total (50 point cap)	50.0
Benefit/Cost Ratio Subtotal	72.5
Total Benefits (\$1,000/Year)	1,496.4
Facility Life	1,491.8
Mobility	0.0
Safety	1.6
User Cost	3.0
Annualized Cost (\$1,000/Year)	20.6

B. Merit Category Score (Scaled to 50 Points)	3.6
--	------------

CDTC Project Category: Local Low Volume - Pavement Preservation

Project Limits: Wetsel Road to Pittstown Town Line

Sponsor: Rensselaer County

Sponsor Priority: 9 in Pavement Category

Total Cost: \$0.152 M (includes match and inflation)

Existing Pavement Rating: 5

Average Daily Traffic Volume: 1,199

Repair Type: 2" Hot Mix Asphalt Overlay

Proposed Project Design Life: 10 years

Detailed Description: Preserve the pavement using a 2" Hot Mix Asphalt Overlay.

Roadway Functional Classification: Fogarty Road is not a National Highway System facility and is classified as an Urban Minor Collector road.

Federal Fund Source Eligibility: Surface Transportation Program

Transportation Considerations:

Walking: Not in a CDTC Pedestrian District and makes no commitment to pedestrian facilities.

Biking: Not on CDTC Bicycle Network. No bicycle infrastructure improvements.

Transit: Does not add, upgrade, or remove transit components.

Motor Vehicles/Freight: Project has neutral affect (no known impact, positive or negative) on freight and/or goods movement.

Other Considerations: Preservation treatment may not be sufficient. Additional engineering evaluation may be warranted. Low traffic volume. Project will be designed by the sponsor for a maximum amount payable (preliminary and final design) of \$4,000. Construction Inspection services will be solicited.

Advisory Committee Comments: None noted.

MERIT CATEGORIES		NUMERIC VALUES	SCORE
COMMUNITY QUALITY OF LIFE & EQUITY (10 POINTS POSSIBLE)			
Land Use Compatability	SCORE	-1 to +3	0
Smart Growth	SCORE	-1 to +3	0
Environmental Justice	SCORE	-1 to +2	0
Accessibility / ADA / Universal Design/Human Services Transport	SCORE	-1 to +2	0
	SUBTOTAL	-4 to +10	0
APPROPRIATE INFRASTRUCTURE (10 POINTS POSSIBLE)			
Preservation/Renewal of Existing	SCORE	-2 to +5	1
Complete Streets	SCORE	-2 to +5	0
	SUBTOTAL	-4 to +10	1
MULTI-MODALISM (10 POINTS POSSIBLE)			
Transit	SCORE	-2 to +5	0
Pedestrian	SCORE	-1 to +3	0
Bicycle	SCORE	-1 to +2	0
	SUBTOTAL	-4 to +10	0
ENVIRONMENT & HEALTH (8 POINTS POSSIBLE)			
Sensitive Area Protection/Mitigation	SCORE	-1 to +2	0
Greenhouse Gas Emissions Reduction	SCORE	-1 to +2	0
Alternative Fuels Support	SCORE	-1 to +2	0
Other Environmental/Health Benefit	SCORE	-1 to +2	0
	SUBTOTAL	-4 to +8	0
REGIONAL BENEFIT (5 POINTS POSSIBLE)			
Benefit beyond project to transportation system or quality region	SCORE	-2 to +5	0
	SUBTOTAL	-2 to +5	0
ECONOMIC DEVELOPMENT (5 POINTS POSSIBLE)			
Economic Impact	SCORE	-2 to +5	2
	SUBTOTAL	-2 to +5	2
SAFETY & SECURITY (5 POINTS POSSIBLE)			
Additional Safety Benefit Beyond Crash History	SCORE	-1 to +3	0
Security and Resiliency to Natural Hazards and Human Caused Events	SCORE	-1 to +2	0
	SUBTOTAL	-2 to +5	0
OPERATIONS & TECHNOLOGY (5 POINTS POSSIBLE)			
Traffic Operations & Reliability Improvements	SCORE	-1 to +3	0
Use of Beneficial Advanced Technologies	SCORE	-1 to +2	0
	SUBTOTAL	-2 to +5	0
FREIGHT (5 POINTS POSSIBLE)			
Freight and Goods Movement	SCORE	-2 to +5	0
	SUBTOTAL	-2 to +5	0
PERFORMANCE (3 POINTS POSSIBLE)			
Anticipated Effect on all Performance Targets	SCORE	-1 to +3	0
	SUBTOTAL	-1 to +3	0
INNOVATION (2 POINTS POSSIBLE)			
Innovative Solutions	SCORE	0 to +2	0
	SUBTOTAL	0 to +2	0
PROJECT DELIVERY (2 POINTS POSSIBLE)			
On Schedule/On Budget	SCORE	-2 to +2	2
	SUBTOTAL	-2 to +2	2
PROJECT MERIT CATEGORY SUB TOTAL			
Total from Line Items Above	SUBTOTAL	-29 to +70	5
Scaled to 50 points			3.6