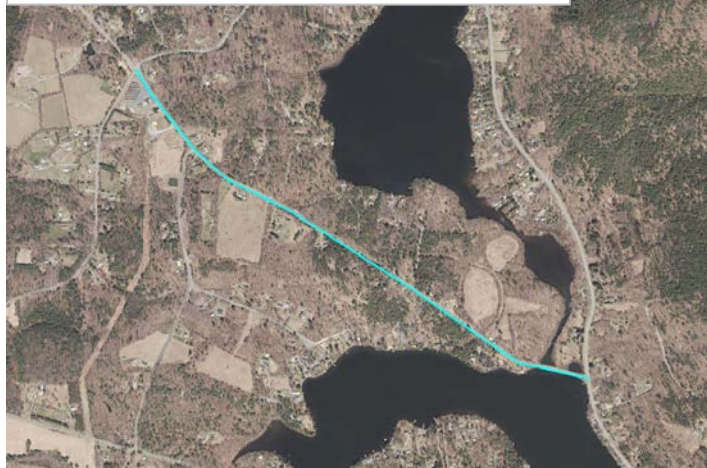


#56 (R333) Eastern Union Turnpike (CR 49) Pavement Preservation

Eastern Union Turnpike
Town of Sand Lake, Rensselaer County



Total Score = A+B (100 Points Max)	54.3
---	-------------

A. Benefit/Cost Ratio Total (50 point cap)	50.0
Benefit/Cost Ratio Subtotal	96.2
Total Benefits (\$1,000/Year)	2,775.3
Facility Life	2,755.0
Mobility	0.0
Safety	8.4
User Cost	11.9
Annualized Cost (\$1,000/Year)	28.8

B. Merit Category Score (Scaled to 50 Points)	4.3
--	------------

CDTC Project Category: Local Low Volume - Pavement Preservation

Project Limits: Glass Lake Road to NY 43

Sponsor: Rensselaer County

Sponsor Priority: 6 in Pavement Category

Total Cost: \$0.212 M (includes match and inflation)

Existing Pavement Rating: 5

Average Daily Traffic Volume: 1,816

Repair Type: 1 1/2" Hot Mix Asphalt Overlay

Proposed Project Design Life: 10 years

Detailed Description: Preserve the pavement using a 1 1/2" Hot Mix Asphalt Overlay.

Roadway Functional Classification: Eastern Union Turnpike is not a National Highway System facility and is classified as an Urban Major Collector road.

Federal Fund Source Eligibility: Surface Transportation Program

Transportation Considerations:

Walking: Not in a CDTC Pedestrian District and makes no commitment to pedestrian facilities.

Biking: Not on CDTC Bicycle Network. No bicycle infrastructure improvements.

Transit: Does not add, upgrade, or remove transit components.

Motor Vehicles/Freight: Project has neutral affect (no known impact, positive or negative) on freight and/or goods movement.

Other Considerations: Project will be designed by the sponsor for a maximum amount payable (preliminary and final design) of \$4,000. Construction Inspection services will be solicited.

Advisory Committee Comments: None noted.

MERIT CATEGORIES		NUMERIC VALUES	SCORE
COMMUNITY QUALITY OF LIFE & EQUITY (10 POINTS POSSIBLE)			
Land Use Compatability	SCORE	-1 to +3	0
Smart Growth	SCORE	-1 to +3	0
Environmental Justice	SCORE	-1 to +2	0
Accessibility / ADA / Universal Design/Human Services Transport	SCORE	-1 to +2	0
	SUBTOTAL	-4 to +10	0
APPROPRIATE INFRASTRUCTURE (10 POINTS POSSIBLE)			
Preservation/Renewal of Existing	SCORE	-2 to +5	1
Complete Streets	SCORE	-2 to +5	0
	SUBTOTAL	-4 to +10	1
MULTI-MODALISM (10 POINTS POSSIBLE)			
Transit	SCORE	-2 to +5	0
Pedestrian	SCORE	-1 to +3	0
Bicycle	SCORE	-1 to +2	0
	SUBTOTAL	-4 to +10	0
ENVIRONMENT & HEALTH (8 POINTS POSSIBLE)			
Sensitive Area Protection/Mitigation	SCORE	-1 to +2	0
Greenhouse Gas Emissions Reduction	SCORE	-1 to +2	0
Alternative Fuels Support	SCORE	-1 to +2	0
Other Environmental/Health Benefit	SCORE	-1 to +2	0
	SUBTOTAL	-4 to +8	0
REGIONAL BENEFIT (5 POINTS POSSIBLE)			
Benefit beyond project to transportation system or quality region	SCORE	-2 to +5	0
	SUBTOTAL	-2 to +5	0
ECONOMIC DEVELOPMENT (5 POINTS POSSIBLE)			
Economic Impact	SCORE	-2 to +5	2
	SUBTOTAL	-2 to +5	2
SAFETY & SECURITY (5 POINTS POSSIBLE)			
Additional Safety Benefit Beyond Crash History	SCORE	-1 to +3	0
Security and Resiliency to Natural Hazards and Human Caused Events	SCORE	-1 to +2	0
	SUBTOTAL	-2 to +5	0
OPERATIONS & TECHNOLOGY (5 POINTS POSSIBLE)			
Traffic Operations & Reliability Improvements	SCORE	-1 to +3	0
Use of Beneficial Advanced Technologies	SCORE	-1 to +2	0
	SUBTOTAL	-2 to +5	0
FREIGHT (5 POINTS POSSIBLE)			
Freight and Goods Movement	SCORE	-2 to +5	0
	SUBTOTAL	-2 to +5	0
PERFORMANCE (3 POINTS POSSIBLE)			
Anticipated Effect on all Performance Targets	SCORE	-1 to +3	1
	SUBTOTAL	-1 to +3	1
INNOVATION (2 POINTS POSSIBLE)			
Innovative Solutions	SCORE	0 to +2	0
	SUBTOTAL	0 to +2	0
PROJECT DELIVERY (2 POINTS POSSIBLE)			
On Schedule/On Budget	SCORE	-2 to +2	2
	SUBTOTAL	-2 to +2	2
PROJECT MERIT CATEGORY SUB TOTAL			
Total from Line Items Above	SUBTOTAL	-29 to +70	6
Scaled to 50 points			4.3