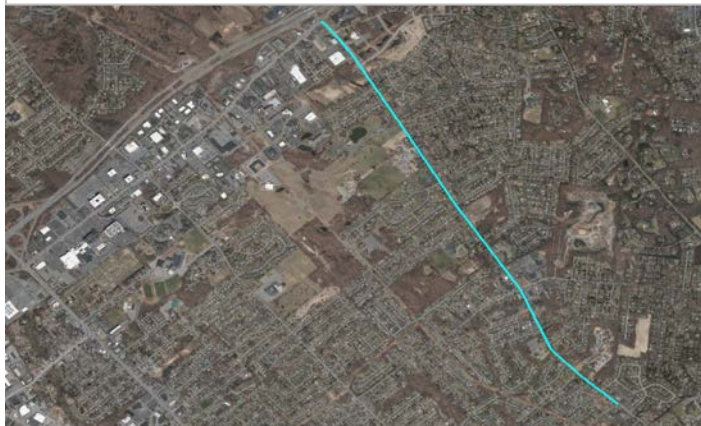


#81 (A603) Albany Shaker Road Corridor Improvements

Albany Shaker Rd: Wolf Rd to Everett Rd, Town of Colonie, Albany County



CDTC Project Category: Safety

Sponsor: Town of Colonie

Sponsor Priority: 1

Total Cost: \$0.860 M (includes match and inflation)

Total Score = A+B (100 Points Max)	19.1
-------------------------------------------	-------------

A. Benefit/Cost Ratio Total (50 point cap)	2.6
Benefit/Cost Ratio Subtotal	2.6
Total Benefits (\$1,000/Year)	201.9
Facility Life	0.0
Mobility	0.0
Safety	201.9
User Cost	0.0
Annualized Cost (\$1,000/Year)	76.5

B. Merit Category Score (Scaled to 50 Points)	16.4
------------------------------------------------------	-------------

Existing Pavement Rating: Ranges from 8 to 9

Repair Type: Speed limit reduction; pedestrian improvements

Average Daily Traffic Volume: 16,160

Detailed Description: Install new or upgraded pedestrian infrastructure as follows: at The Crossings & Emerick Lane intersection add a striped crosswalk, pedestrian signal heads and push buttons on the west leg of the intersection and add ADA ramps to all legs of the intersection; at the Maria Drive & Marie Parkway intersection add striped crosswalks, ADA ramps, pedestrian signal heads and push buttons on all four legs of the intersection. Existing traffic signal poles will remain in-place, but the controller will be upgraded. At the intersection at Shaker Elementary, install a traffic signal (paid for by Albany County) with striped crosswalks, ADA ramps, pedestrian signal heads and push buttons to all three legs of the intersection. The west leg has an existing, uncontrolled crosswalk. At the Osborne Road intersection add striped crosswalks, ADA ramps, pedestrian signal heads and push buttons on all four legs of the intersection. The accommodations on the west and south legs will be replacements. At the Everett Road intersection add striped crosswalks, ADA ramps, pedestrian signal heads and push buttons to all four legs of the intersection. Reduce the speed limit to 30 mph.

Roadway Functional Classification: Albany Shaker Road is a National Highway System facility and is classified as an Urban Principal Arterial Other

Federal Fund Source Eligibility: National Highway Preservation Program, Surface Transportation Program, Highway Safety Improvement Program (possible).

Transportation Considerations:

Walking: In Tier 1 Ped District and improves pedestrian accessibility & safety by lowering speed limit, installing new crosswalks & ped-signals.

Biking: On network; no significant improvements for bicyclists.

Transit: Does not add, upgrade, or remove transit components.

Motor Vehicles/Freight: Project has neutral affect (no known impact, positive or negative) on freight and/or goods movement.

Other Considerations: Recommendation from a completed CDTC Linkage Study. An additional \$225,000 from Albany County and \$60,000 from Stewarts & Crisafulli Traffic Improvement Escrows will be used to install the new traffic signal at Shaker Elementary and to support the project. 2013-2018: 1 Fatality, 15 Significant Injuries.

Advisory Committee Comments: Regional Safety and Operations - Seems like a relatively low cost request for safety upgrades and improvements. It's very busy in that area for all kinds of motor/ped/ bike traffic.

MERIT CATEGORIES		NUMERIC VALUES		SCORE
COMMUNITY QUALITY OF LIFE & EQUITY (10 POINTS POSSIBLE)				
Land Use Compatability	SCORE	-1 to +3		2
Smart Growth	SCORE	-1 to +3		2
Environmental Justice	SCORE	-1 to +2		2
Accessibility / ADA / Universal Design/Human Services Transport	SCORE	-1 to +2		1
	SUBTOTAL	-4 to +10		7
APPROPRIATE INFRASTRUCTURE (10 POINTS POSSIBLE)				
Preservation/Renewal of Existing	SCORE	-2 to +5		0
Complete Streets	SCORE	-2 to +5		1
	SUBTOTAL	-4 to +10		1
MULTI-MODALISM (10 POINTS POSSIBLE)				
Transit	SCORE	-2 to +5		0
Pedestrian	SCORE	-1 to +3		3
Bicycle	SCORE	-1 to +2		0
	SUBTOTAL	-4 to +10		3
ENVIRONMENT & HEALTH (8 POINTS POSSIBLE)				
Sensitive Area Protection/Mitigation	SCORE	-1 to +2		0
Greenhouse Gas Emissions Reduction	SCORE	-1 to +2		1
Alternative Fuels Support	SCORE	-1 to +2		0
Other Environmental/Health Benefit	SCORE	-1 to +2		0
	SUBTOTAL	-4 to +8		1
REGIONAL BENEFIT (5 POINTS POSSIBLE)				
Benefit beyond project to transportation system or quality region	SCORE	-2 to +5		3
	SUBTOTAL	-2 to +5		3
ECONOMIC DEVELOPMENT (5 POINTS POSSIBLE)				
Economic Impact	SCORE	-2 to +5		3
	SUBTOTAL	-2 to +5		3
SAFETY & SECURITY (5 POINTS POSSIBLE)				
Additional Safety Benefit Beyond Crash History	SCORE	-1 to +3		3
Security and Resiliency to Natural Hazards and Human Caused Events	SCORE	-1 to +2		0
	SUBTOTAL	-2 to +5		3
OPERATIONS & TECHNOLOGY (5 POINTS POSSIBLE)				
Traffic Operations & Reliability Improvements	SCORE	-1 to +3		0
Use of Beneficial Advanced Technologies	SCORE	-1 to +2		0
	SUBTOTAL	-2 to +5		0
FREIGHT (5 POINTS POSSIBLE)				
Freight and Goods Movement	SCORE	-2 to +5		0
	SUBTOTAL	-2 to +5		0
PERFORMANCE (3 POINTS POSSIBLE)				
Anticipated Effect on all Performance Targets	SCORE	-1 to +3		2
	SUBTOTAL	-1 to +3		2
INNOVATION (2 POINTS POSSIBLE)				
Innovative Solutions	SCORE	0 to +2		0
	SUBTOTAL	0 to +2		0
PROJECT DELIVERY (2 POINTS POSSIBLE)				
On Schedule/On Budget	SCORE	-2 to +2		0
	SUBTOTAL	-2 to +2		0
PROJECT MERIT CATEGORY SUB TOTAL				
Total from Line Items Above	SUBTOTAL	-29 to +70		23
Scaled to 50 points				16.4