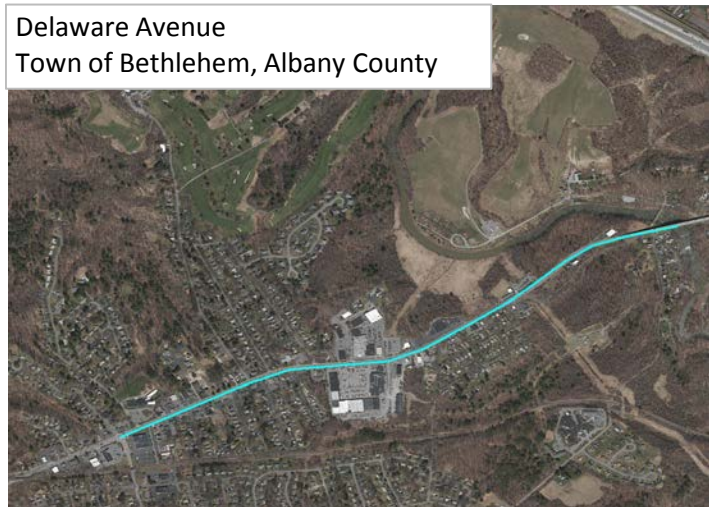


### #74 (A601) Delaware Avenue Complete Streets & Road Diet Project



<b>Total Score = A+B (100 Points Max)</b>	<b>36.4</b>
---	-------------

<b>A. Benefit/Cost Ratio Total (50 point cap)</b>	<b>10.6</b>
Benefit/Cost Ratio Subtotal	10.6
Total Benefits (\$1,000/Year)	5,020.6
Facility Life	4,678.9
Mobility	0.0
Safety	326.8
User Cost	14.9
Annualized Cost (\$1,000/Year)	471.7

<b>B. Merit Category Score (Scaled to 50 Points)</b>	<b>25.7</b>
--	-------------

**CDTC Project Category:** Pavement Preservation

**Project Limits:** Elsmere Avenue to Normans Kill Bridge / City of Albany Line

**Sponsor:** Town of Bethlehem

**Sponsor Priority:** 1

**Total Cost:** \$3.850 M (includes match and inflation)

**2018 TAP/CMAQ Candidate:** Yes

**Existing Pavement Rating:** Ranges from 6 to 7

**Average Daily Traffic Volume:** 15,370

**Repair Type:** Mill and Fill

**Proposed Project Design Life:** 20 years

**Detailed Description:** Restripe to reduce roadway from 4-lanes to 2-lanes with center left turn lane and bike lanes, construct sidewalks through driveways, traffic signal modifications, new lighting at crosswalks, ADA compliant crosswalks with curb ramps and pedestrian refuge islands, rectangular rapid flashing beacons, bus transit pull-offs, and gateway treatment. Bus pull-off adjacent to the CVS at 260 Delaware Avenue will require right of way. NYSDOT will mill and fill the pavement through its pavement preservation set-aside (RG136).

**Roadway Functional Classification:** Delaware Avenue is not a National Highway System facility and is classified as an Urban Minor Arterial road.

**Federal Fund Source Eligibility:** Surface Transportation Program

**Transportation Considerations:**

**Walking:** This project is in and connects to CDTC Tier 1 Pedestrian Districts and will significantly improve pedestrian accessibility and safety with new sidewalks, reduced speed of vehicles, pedestrian refuge islands, high visibility crosswalks, Rectangular Rapid Flashing Beacons, etc.

**Biking:** On CDTC Bicycle Network and significantly improves bicycle infrastructure by reducing lanes from 4 to 2, reducing speeds, and installing bike lanes.

**Transit:** This project is on the transit priority network and will upgrade transit components.

**Motor Vehicles/Freight:** Project has neutral affect (no known impact, positive or negative) on freight and/or goods movement.

**Other Considerations:** Project connects to an Environmental Justice Area. Implements the Delaware Avenue Complete Streets Linkage Study. NYSDOT concurrence received by CDTC. **NYS Thruway Concurrence Required.**

**Advisory Committee Comments:** None noted.

<b>MERIT CATEGORIES</b>	<b>NUMERIC VALUES</b>	<b>SCORE</b>
<b>COMMUNITY QUALITY OF LIFE &amp; EQUITY (10 POINTS POSSIBLE)</b>		
Land Use Compatability	SCORE -1 to +3	2
Smart Growth	SCORE -1 to +3	3
Environmental Justice	SCORE -1 to +2	2
Accessibility / ADA / Universal Design/Human Services Transport	SCORE -1 to +2	1
	<b>SUBTOTAL -4 to +10</b>	<b>8</b>
<b>APPROPRIATE INFRASTRUCTURE (10 POINTS POSSIBLE)</b>		
Preservation/Renewal of Existing	SCORE -2 to +5	3
Complete Streets	SCORE -2 to +5	5
	<b>SUBTOTAL -4 to +10</b>	<b>8</b>
<b>MULTI-MODALISM (10 POINTS POSSIBLE)</b>		
Transit	SCORE -2 to +5	3
Pedestrian	SCORE -1 to +3	3
Bicycle	SCORE -1 to +2	2
	<b>SUBTOTAL -4 to +10</b>	<b>8</b>
<b>ENVIRONMENT &amp; HEALTH (8 POINTS POSSIBLE)</b>		
Sensitive Area Protection/Mitigation	SCORE -1 to +2	0
Greenhouse Gas Emissions Reduction	SCORE -1 to +2	1
Alternative Fuels Support	SCORE -1 to +2	0
Other Environmental/Health Benefit	SCORE -1 to +2	0
	<b>SUBTOTAL -4 to +8</b>	<b>1</b>
<b>REGIONAL BENEFIT (5 POINTS POSSIBLE)</b>		
Benefit beyond project to transportation system or quality region	SCORE -2 to +5	2
	<b>SUBTOTAL -2 to +5</b>	<b>2</b>
<b>ECONOMIC DEVELOPMENT (5 POINTS POSSIBLE)</b>		
Economic Impact	SCORE -2 to +5	4
	<b>SUBTOTAL -2 to +5</b>	<b>4</b>
<b>SAFETY &amp; SECURITY (5 POINTS POSSIBLE)</b>		
Additional Safety Benefit Beyond Crash History	SCORE -1 to +3	3
Security and Resiliency to Natural Hazards and Human Caused Events	SCORE -1 to +2	0
	<b>SUBTOTAL -2 to +5</b>	<b>3</b>
<b>OPERATIONS &amp; TECHNOLOGY (5 POINTS POSSIBLE)</b>		
Traffic Operations & Reliability Improvements	SCORE -1 to +3	0
Use of Beneficial Advanced Technologies	SCORE -1 to +2	0
	<b>SUBTOTAL -2 to +5</b>	<b>0</b>
<b>FREIGHT (5 POINTS POSSIBLE)</b>		
Freight and Goods Movement	SCORE -2 to +5	0
	<b>SUBTOTAL -2 to +5</b>	<b>0</b>
<b>PERFORMANCE (3 POINTS POSSIBLE)</b>		
Anticipated Effect on all Performance Targets	SCORE -1 to +3	2
	<b>SUBTOTAL -1 to +3</b>	<b>2</b>
<b>INNOVATION (2 POINTS POSSIBLE)</b>		
Innovative Solutions	SCORE 0 to +2	0
	<b>SUBTOTAL 0 to +2</b>	<b>0</b>
<b>PROJECT DELIVERY (2 POINTS POSSIBLE)</b>		
On Schedule/On Budget	SCORE -2 to +2	0
	<b>SUBTOTAL -2 to +2</b>	<b>0</b>
<b>PROJECT MERIT CATEGORY SUB TOTAL</b>		
Total from Line Items Above	<b>SUBTOTAL -29 to +70</b>	<b>36</b>
Scaled to 50 points		<b>25.7</b>