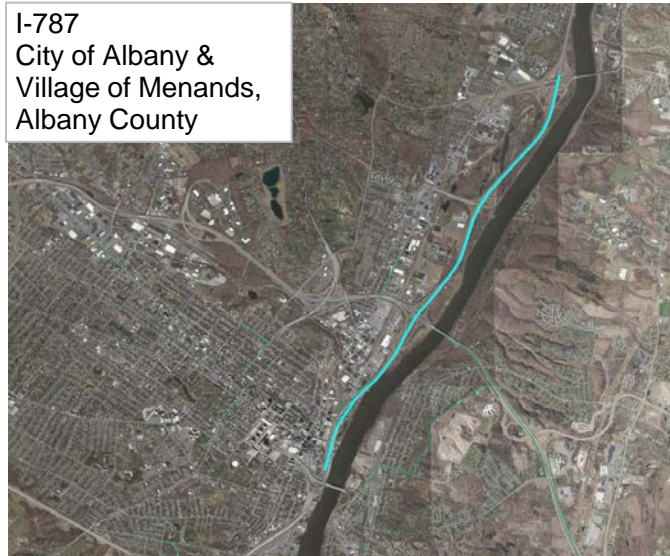


#30 (A597) I-787 Pavement Corrective Maintenance Exit 3B to Exit 7 (NY 378)



Total Score = A+B (100 Points Max)	48.8
---	-------------

A. Benefit/Cost Ratio Total (50 point cap)	37.4
Benefit/Cost Ratio Subtotal	37.4
Total Benefits (\$1,000/Year)	20,861.8
Facility Life	20,410.1
Mobility	0.0
Safety	152.7
User Cost	299.0
Annualized Cost (\$1,000/Year)	557.8

B. Merit Category Score (Scaled to 50 Points)	11.4
--	-------------

CDTC Project Category: Pavement Preservation

Project Limits: Both sides of I-787 roughly between Exit 4B and the Town of Colonie/Village of Menands Line at NY 378

Existing Pavement Rating: Ranges between 7 and 9

Sponsor: NYSDOT

Average Daily Traffic Volume: 71,162

Sponsor Priority: 7 in Pavement Category

Repair Type: Single Course Mill and Fill

Total Cost: \$4.677 M (includes match and inflation)

Proposed Project Design Life: 12 years

Detailed Description: Single Course overlay or a Single Course Mill and Fill. Isolated repairs will be incorporated to address areas of deeper distress.

Roadway Functional Classification: I-787 is a National Highway System facility and is classified as an Urban Principal Arterial Interstate and Urban Principal Arterial Expressway.

Federal Fund Source Eligibility: National Highway Program, Surface Transportation Program

Transportation Considerations:

Walking: N/A. Interstate pavement preservation.

Biking: N/A. Interstate pavement preservation.

Transit: Does not add, upgrade, or remove transit components.

Motor Vehicles/Freight: Project is located on a NYSDOT designated Qualifying and/or Access Highway and the CDTC Freight Priority Network. Project addresses a recommendation from the CDTC Freight Plan (2016); maintain a state-of-good-repair to preserve travel time and/or reliability on the CDTC Freight Priority Network (I-787).

Other Considerations: Project is in an Environmental Justice area. Relates to the I-787/Hudson Waterfront Corridor Study.

Advisory Committee Comments: None noted.

MERIT CATEGORIES		NUMERIC VALUES	SCORE
COMMUNITY QUALITY OF LIFE & EQUITY (10 POINTS POSSIBLE)			
Land Use Compatability	SCORE	-1 to +3	0
Smart Growth	SCORE	-1 to +3	0
Environmental Justice	SCORE	-1 to +2	1
Accessibility / ADA / Universal Design/Human Services Transport	SCORE	-1 to +2	0
	SUBTOTAL	-4 to +10	1
APPROPRIATE INFRASTRUCTURE (10 POINTS POSSIBLE)			
Preservation/Renewal of Existing	SCORE	-2 to +5	5
Complete Streets	SCORE	-2 to +5	0
	SUBTOTAL	-4 to +10	5
MULTI-MODALISM (10 POINTS POSSIBLE)			
Transit	SCORE	-2 to +5	0
Pedestrian	SCORE	-1 to +3	0
Bicycle	SCORE	-1 to +2	0
	SUBTOTAL	-4 to +10	0
ENVIRONMENT & HEALTH (8 POINTS POSSIBLE)			
Sensitive Area Protection/Mitigation	SCORE	-1 to +2	0
Greenhouse Gas Emissions Reduction	SCORE	-1 to +2	0
Alternative Fuels Support	SCORE	-1 to +2	0
Other Environmental/Health Benefit	SCORE	-1 to +2	0
	SUBTOTAL	-4 to +8	0
REGIONAL BENEFIT (5 POINTS POSSIBLE)			
Benefit beyond project to transportation system or quality region	SCORE	-2 to +5	2
	SUBTOTAL	-2 to +5	2
ECONOMIC DEVELOPMENT (5 POINTS POSSIBLE)			
Economic Impact	SCORE	-2 to +5	4
	SUBTOTAL	-2 to +5	4
SAFETY & SECURITY (5 POINTS POSSIBLE)			
Additional Safety Benefit Beyond Crash History	SCORE	-1 to +3	0
Security and Resiliency to Natural Hazards and Human Caused Events	SCORE	-1 to +2	0
	SUBTOTAL	-2 to +5	0
OPERATIONS & TECHNOLOGY (5 POINTS POSSIBLE)			
Traffic Operations & Reliability Improvements	SCORE	-1 to +3	0
Use of Beneficial Advanced Technologies	SCORE	-1 to +2	0
	SUBTOTAL	-2 to +5	0
FREIGHT (5 POINTS POSSIBLE)			
Freight and Goods Movement	SCORE	-2 to +5	1
	SUBTOTAL	-2 to +5	1
PERFORMANCE (3 POINTS POSSIBLE)			
Anticipated Effect on all Performance Targets	SCORE	-1 to +3	2
	SUBTOTAL	-1 to +3	2
INNOVATION (2 POINTS POSSIBLE)			
Innovative Solutions	SCORE	0 to +2	0
	SUBTOTAL	0 to +2	0
PROJECT DELIVERY (2 POINTS POSSIBLE)			
On Schedule/On Budget	SCORE	-2 to +2	1
	SUBTOTAL	-2 to +2	1
PROJECT MERIT CATEGORY SUB TOTAL			
Total from Line Items Above	SUBTOTAL	-29 to +70	16
Scaled to 50 points			11.4