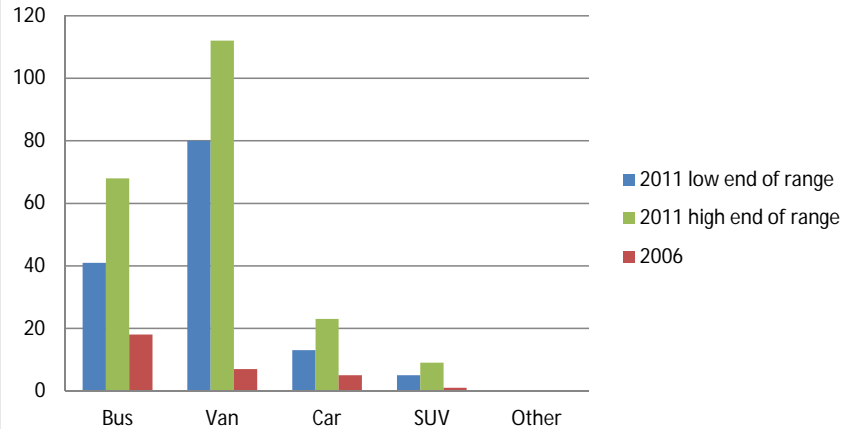
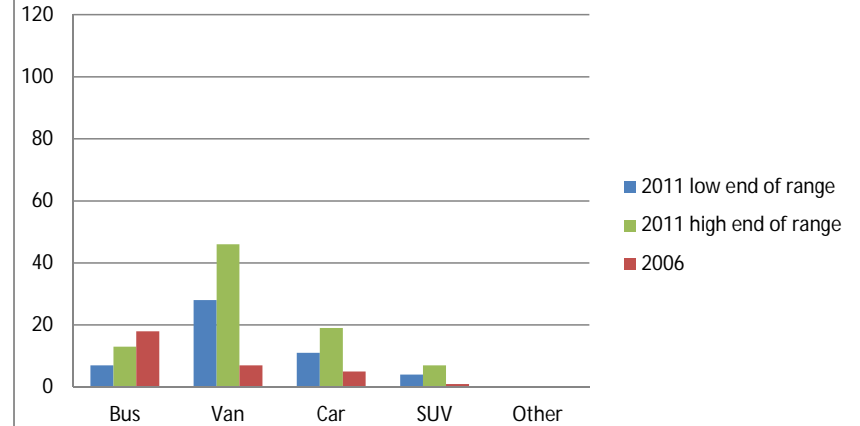


Vehicles needed for Replacement 2011 vs 2006



Vehicles needed for Expansion 2011 vs 2006



2011 replacement

	Bus	Van	Car	Truck/SUV	Other	Totals:
low end	41	80	13	5		139
high end	68	112	23	9		212

2011 expansion

	Bus	Van	Car	Truck/SUV	Other	Totals:
low end	7	28	11	4		50
high end	13	46	19	7		85

2006 replacement

Transportation Providers Responses

Bus	Van	Car	SUV	Other	Totals:
38	23	7	4	0	72

2006 expansion

Transportation Providers Responses

Bus	Van	Car	SUV	Other	Totals:
18	7	5	1	0	31

2011 Survey Question 18. 37 respondents answered this question:

In the next five years, how many vehicles do you estimate you will need to replace and/or add to your fleet for each of the following categories: Bus, Van, Car, Truck/SUV, Other
On the Survey Monkey form choices were given for the following ranges: 1-2 vehicles, 3-5, 6-10, 16+

2006 Survey Question 30. Asked about vehicle replacement needs and expansion plans. **38 respondents** (categorized as Transportation Providers) answered this question.