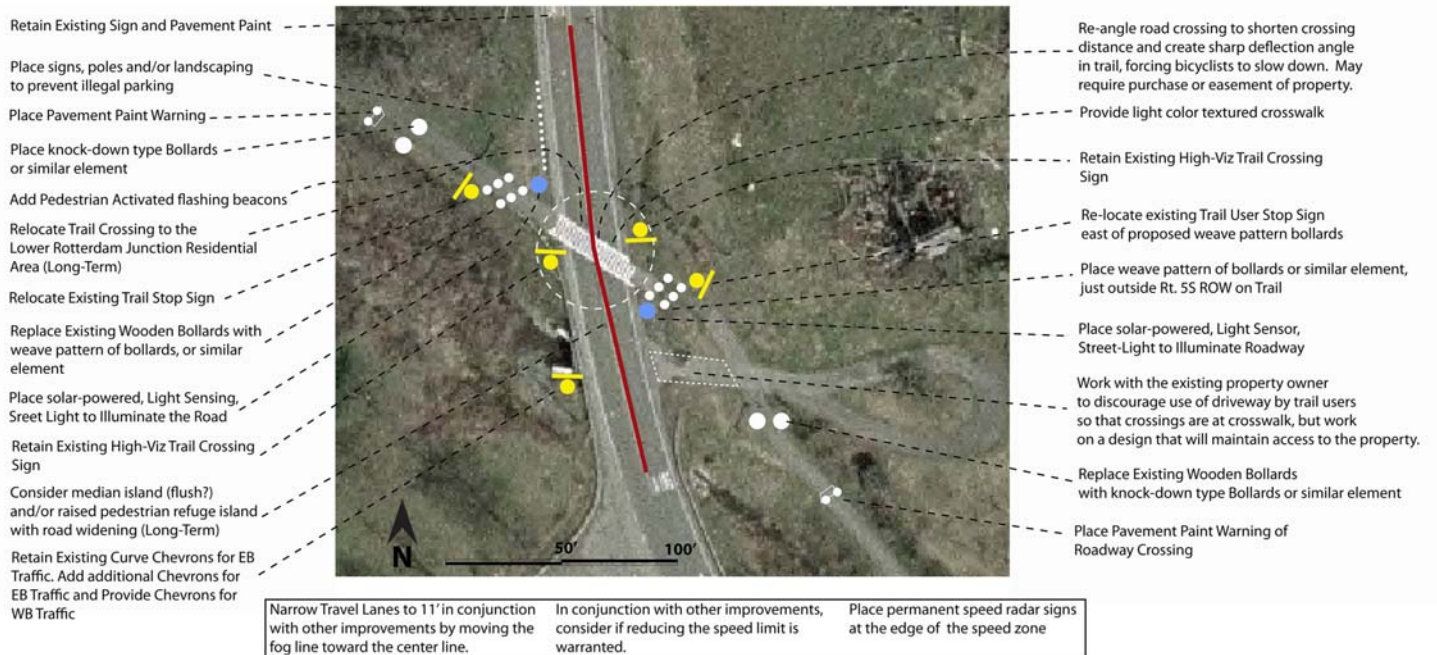


ROTTERDAM NYS THRUWAY EXIT 26 & I-890 LAND USE AND TRANSPORTATION STUDY



Recommended Improvements for the Bike Path Crossing At Route 5S, Town of Rotterdam

Total Study Cost: \$25,000 consultant effort

Description: The Exit 26 & I-890 Land Use and Transportation study area includes approximately 475 acres of land located along the southern shore of the Mohawk River in the Town of Rotterdam between the Thruway Exit 26 and Mabie Lane. This study was undertaken to examine future land use options for the area and examine the implications the options may have for the local transportation system and surrounding land uses. The Mohawk-Hudson Bike Path runs along the river in the study area. Area residents also wanted the bike path to be studied as part of the review. Particular attention was given to studying the crossing of the Mohawk Hudson Bike-Hike Trail over Route 5S just south of Lower Rotterdam Junction. This crossing has been a safety concern for town residents and trail users for years. Safety at this crossing is still a significant concern and as a result, detailed analysis of potential measures that could make the crossing safer was conducted. The improvements proposed in this study maintain an acceptable level of service, but also help mitigate issues or factors that influence the higher than expected crash rates that are currently experienced on the major roads in the study area. The study includes recommendations for land use, zoning, and transportation improvements.

This study was completed in May 2008.

To view the final report, visit <http://www.cdtcmpo.org/linkage/exit26/exit26.pdf>.

Sponsors: CDTC and Town of Rotterdam

Consultant: Wilbur Smith Associates