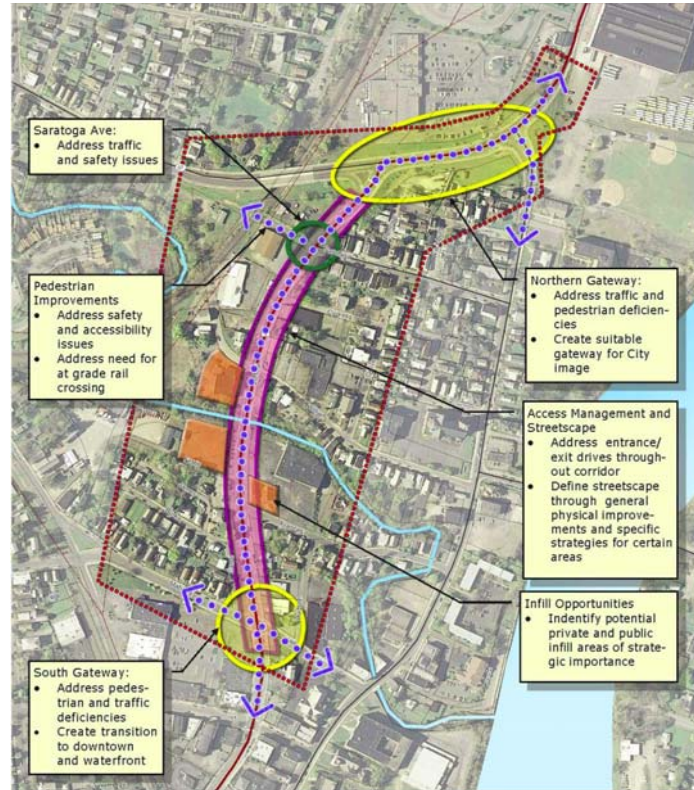


MECHANICVILLE CENTRAL CORRIDORS LINKAGE STUDY



Concept map for the Central Avenue Corridor in the City of Mechanicville, NY.

Total Study Cost: \$60,000 consultant effort

Description: The City is requesting a consultant study that will study the linkage of three key areas of the City: Mabbett/Hill, Route 67 and Northern Central Avenue (US 4/NY 32: the Lakes to Locks Passage). The study will focus on how best to integrate sound planning principles that consider both land use and transportation issues. The study objectives include identifying and addressing the needs of the North Central community, developing strategies for the redevelopment of existing commercial/residential areas and assuring that the North Central Community both contributes to and benefits from the City's overall revitalization efforts. Street connections, developing mixed use activity centers/transit corridors, identifying connections to the City's waterfront, and an enhanced streetscape with quality bicycle and pedestrian facilities are critical components of this effort.

This study was completed in June 2009.

To view the final report, visit <http://www.cdtcmpo.org/linkage/mechcentral.pdf>.

Sponsors: CDTC and the City of Mechanicville

Consultant: Elan Planning and Design