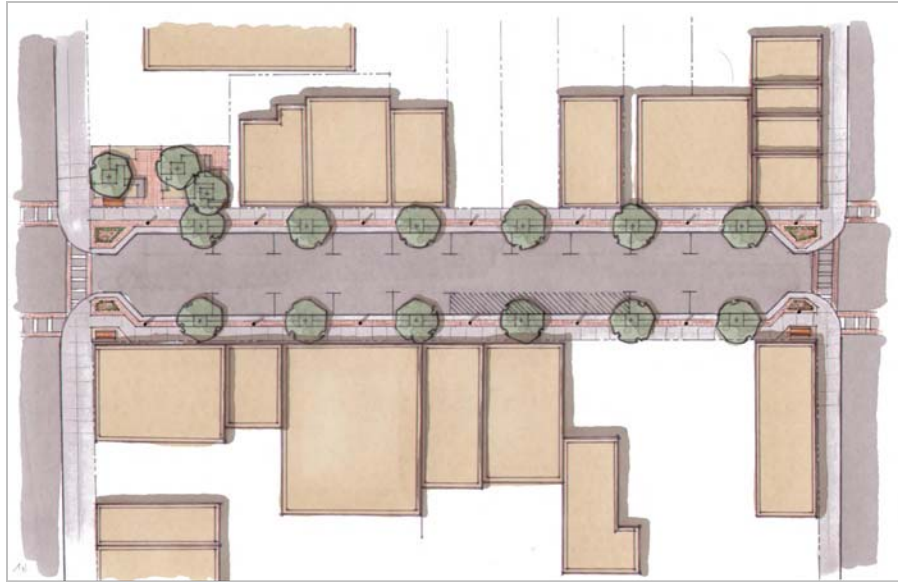


NORTH SWAN STREET MULTIMODAL ACCESSIBILITY STUDY



Streetscape Concept for North Swan Street between Second Street and Ten Broeck Place in the City of Albany, NY.

Total Study Cost: \$20,000 consultant effort

Description: CDTC assisted the Albany Housing Authority (AHA), with support from the City of Albany, with a consultant study to develop a conceptual streetscape plan for North Swan Street which balances the needs of all transportation modes while enhancing the appearance of the street to help attract people to the redeveloped commercial/cultural corridor. Significant investment is being made in the study area by the AHA, the City and others including new and rehabilitated residential housing units, the reuse of St. Joseph's Academy and the purchase of the King Building for offices, a gallery and gift shop for the Ten Broeck Mansion. It is essential that the investment being made by AHA and others in the neighborhood be supported by investments in the streetscape and transportation system. In addition to the streetscape plan, this study looked at increasing the multi-modal accessibility of North Swan Street and reviewed the one-way traffic circulation patterns on North Swan and much of the surrounding street network.

This study was completed in March 2008.

To view the final report, visit <http://www.cdtcmppo.org/linkage/northswan.pdf>.

Sponsors: CDTC, Albany Housing Authority and City of Albany

Consultant: Behan Planning Associates, LLC