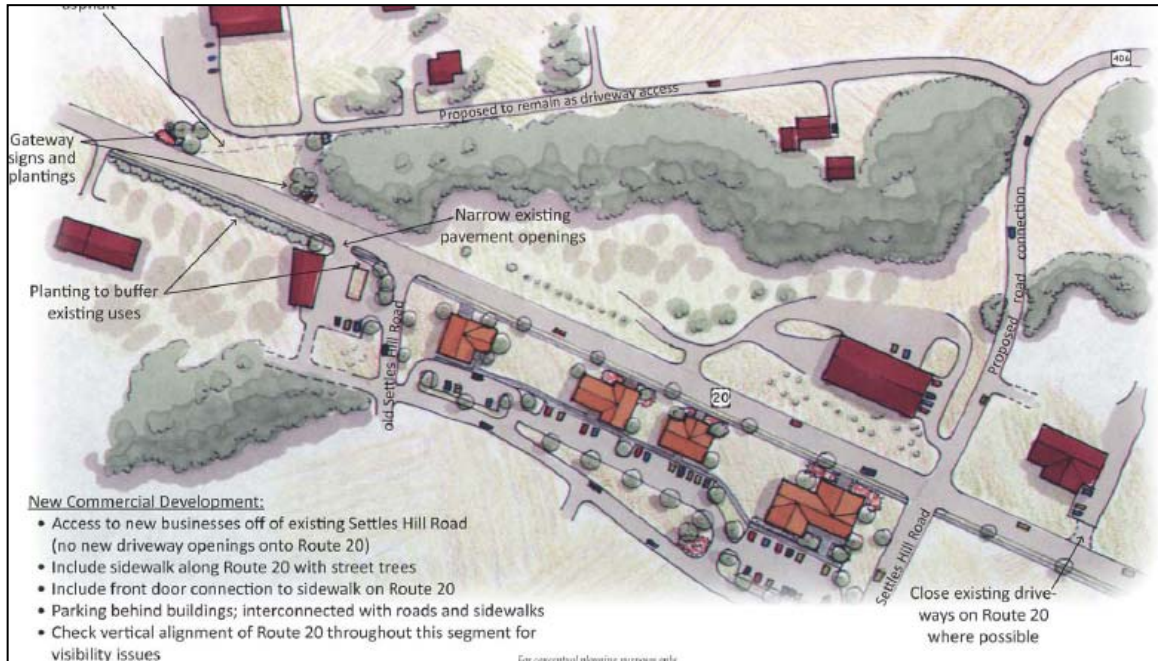


GUILDERLAND/PRINCETOWN LAND USE AND TRANSPORTATION STUDY FOR ROUTE 20



Conceptual realignment and access management alternative near Giffords Church intersection in the town of Princetown.

Total Study Cost: \$32,000 consultant effort

Description: CDTC assisted the towns of Guilderland and Princetown with a consultant study to examine the land resources and current zoning in the Route 20 corridor from NY 158 to Duanesburg, focusing on the development of mixed use country hamlet and rural zones. The study also determined the feasibility of infrastructure modifications with the prospect of creating an economically and aesthetically enhanced Route 20 corridor in the two municipalities. The study developed action plans on access management, pedestrian/bike facilities, streetscape improvements, natural/scenic topographic features, environmental features, architectural/site design, a hamlet concept, and mixed use development. This effort is expected to help the town of Guilderland implement recommendations in its Comprehensive Plan and its Rural Guilderland Study. It also assisted the town of Princetown in addressing the challenges being faced with the arrival of public water in the Route 20 corridor. The recommendations of the Watervliet Reservoir Watershed Protection Study (CDRPC, 2003) were also considered.

This study was completed in November 2008.

To view the final report, visit <http://www.cdtcmpo.org/linkage/materials/route20.pdf>.

Sponsors: CDTC and Towns of Guilderland and Princetown

Consultant: Behan Planning Associates, LLC.