

HARRIMAN CAMPUS – UNIVERSITY AT ALBANY TRANSPORTATION LINKAGE STUDY

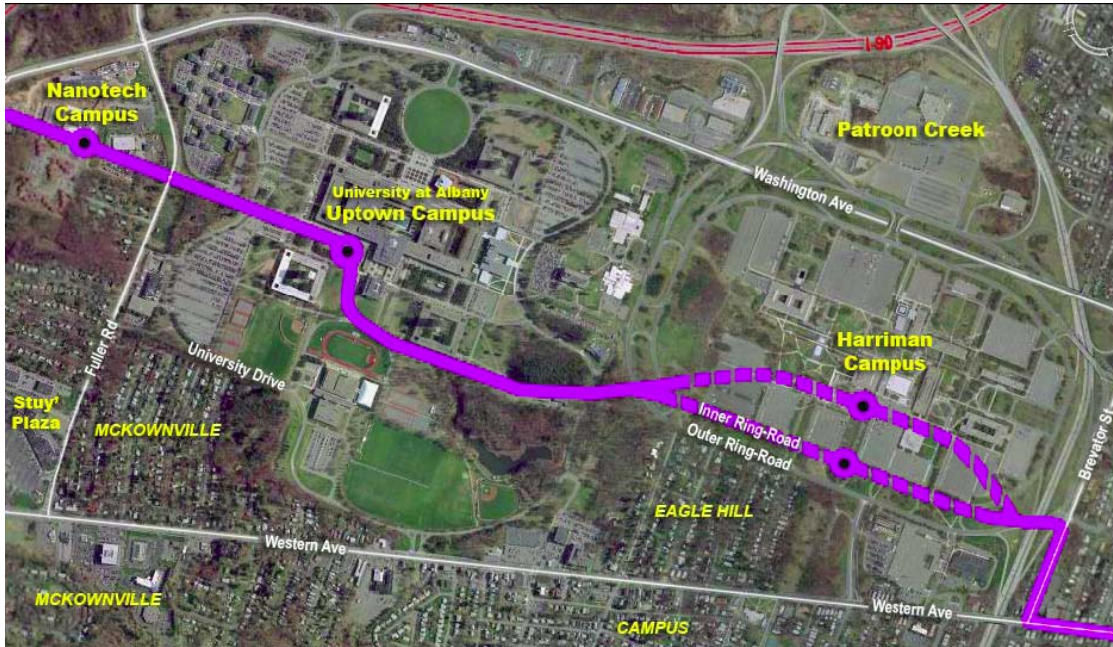


Image of the study area overlaid with an illustration of the transportation spine concept in the City of Albany, New York.

Total Study Cost: \$100,000 consultant effort

Description: The Harriman Campus – University at Albany – Fuller Road Transportation Linkage Study was proposed by the Harriman Research and Technology Development Corporation (HRTDC). The purpose of this study is to develop an efficient, reliable and multi-modal transportation system that addresses current shortcomings while considering the transportation needs related to research and technology expansion at the Harriman Campus, anticipated growth at the University at Albany and Albany NanoTech Campus areas and the potential for increased traffic on Washington Avenue, Fuller Road and other roadways over the next ten years (2006 through 2016). As part of this effort, consideration will be given to the interaction of planned growth at these facilities with the surrounding community. To this end, the primary objectives of this study will be to develop a vision for an integrated multi-modal transportation system and to identify strategies to implement the suggested improvements.

This study was completed in April 2007.

To view the final report, visit <http://www.cdtcmpo.org/linkage/harriman/report.htm>.

Sponsors: CDTC, Harriman Research and Technology Development Corporation, City of Albany, University at Albany, CDPHP, SEFCU, and Washington Avenue LLC

Consultant Team: Nelson\Nygaard Consulting Associates with The Chazen Companies, Alternative Street Design and Studio L'Image.