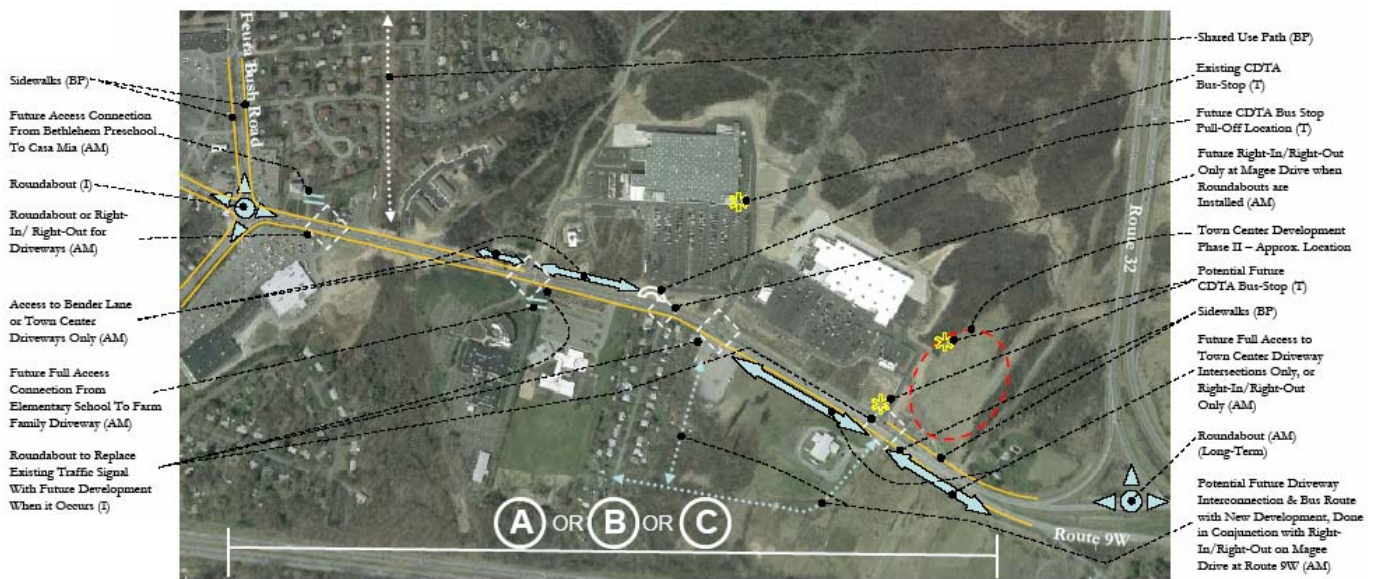


BETHLEHEM ROUTE 9W CORRIDOR STUDY



Recommended options on Route 9W from NY 32 to Feura Bush Road in the Town of Bethlehem, New York.

Total Study Cost: \$75,000 consultant effort

Description: Building on the Town of Bethlehem’s Comprehensive Plan and the New York State Department of Transportation’s (NYSDOT’s) project development work for the Selkirk Bypass, this study developed a transportation plan that gives the Route 9W corridor a transportation system that works well for all users, is supportive of the town’s economic development goals, and respects and strengthens residential neighborhoods along the corridor. As a guide to future growth and change in the community, the Town’s Comprehensive Plan laid out a tentative land use vision for the corridor that called for mixed economic development zoning and hamlet development. The NYSDOT project development work identified two different truck bypass options for NYS Route 396 focusing on the objectives of improving safety and quality of life for residents who live along that route by reducing truck traffic. The town looked at this project in a broader context than just a 'Bypass' by engaging the community in a discussion of the ability of a northern Selkirk Bypass alignment to support the Town's land use and transportation vision for the corridor.

This study was completed in December 2008.

To view the final report, visit <http://www.cdtcmpo.org/linkage/materials/us9w.pdf>.

Sponsors: CDTC and Town of Bethlehem

Consultant: Wilbur Smith Associates