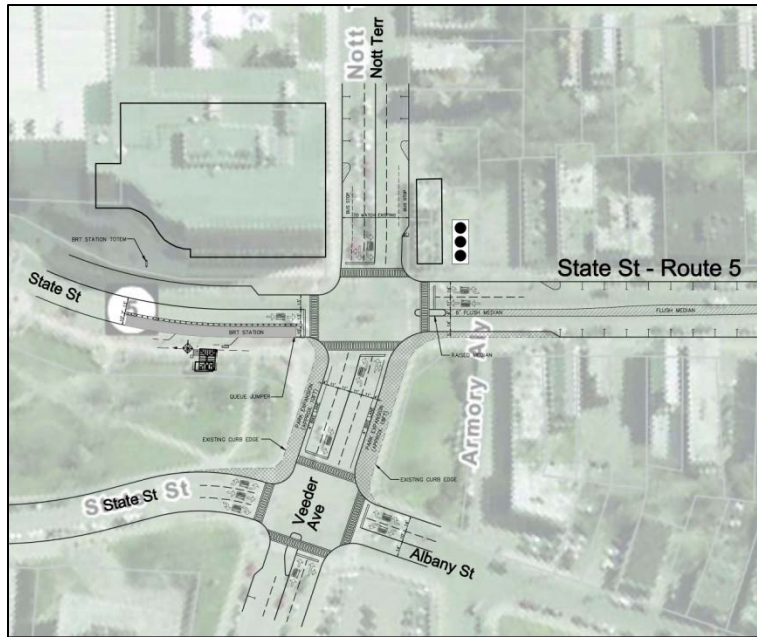


# SCHENECTADY STATE STREET TRANSIT ORIENTED DEVELOPMENT STUDY



Transportation Concepts at Nott Terrace/Veeder Avenue and State Street in the City of Schenectady, New York.

**Total Study Cost:** \$92,000 consultant effort

**Description:** The purpose of this study was to create a concept plan for transit-oriented development in the Hamilton Hill and Vale neighborhoods in the City of Schenectady that supports the BusPlus line on State Street (Route 5) through the year 2020. Proposed BRT stations on State Street at Nott Terrace and Steuben Street (a \$600,000 investment) will help jump start the City's revitalization efforts in these neighborhoods, neighborhoods that face social and economic challenges. Key aspects of this effort included analysis of economic development opportunities focused around transit-oriented development, the location of the proposed BRT stations at Nott Terrace and Steuben Street where they intersect State Street, and the pedestrian environment in the neighborhoods. Planning steps included formation of an Advisory Committee, three community workshops, a statement of vision and principles, review of existing studies, and the development of a community profile, action plan and implementation strategy.

This study was completed in May 2008.

To view the final report, visit <http://www.cdtcmpo.org/linkage/schtod/report.pdf>.

**Sponsors:** CDTC, CDTA and the City of Schenectady

**Consultant:** River Street Planning & Development, LLC with Nelson\Nygaard Consulting Associates and The Chazen Companies