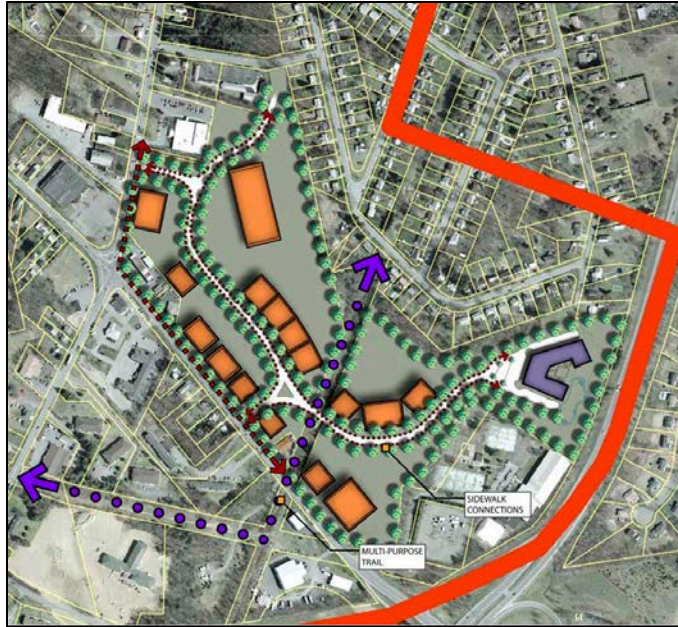


ROTTERDAM NY 7 & NY 146 LAND USE AND TRANSPORTATION STUDY



Concept for a planned unit development on Curry Road in the Town of Rotterdam, New York.

Total Study Cost: \$35,000 consultant effort

Description: The NY 7 & NY 146 Land Use and Transportation Linkage Study focuses on an area which includes approximately 768 acres along Hamburg Street, Carman Road, and Curry Road. The study area currently contains a mix of commercial, residential and civic uses along the primary arteries with large residential neighborhoods located behind the state road network. Due to the study area's direct connection to I-890 and I-87, its link to Schenectady, and the vast neighborhood populations within the study area, there are excellent opportunities for development and redevelopment that can give this area of Rotterdam a new identity and opportunities for economic development.

The project team conducted a public "Visioning Workshop" to elicit community input on major issues, concerns, and potential alternatives/opportunities for land use and transportation improvements within the study area. Future land use options were studied for the area and implications and opportunities for the local transportation system and surrounding land uses were examined. The final report contains revised land-use mapping based on land use recommendations, prototypical development diagrams for several of the proposed zoning districts, and revised draft zoning language and performance standards.

This study was completed in the Spring of 2008.

To view the final report, visit <http://www.cdtcmpo.org/linkage/materials/ny146rot.pdf>

Sponsors: CDTC and Town of Rotterdam

Consultant Team: Synthesis LLP and Creighton Manning Engineering