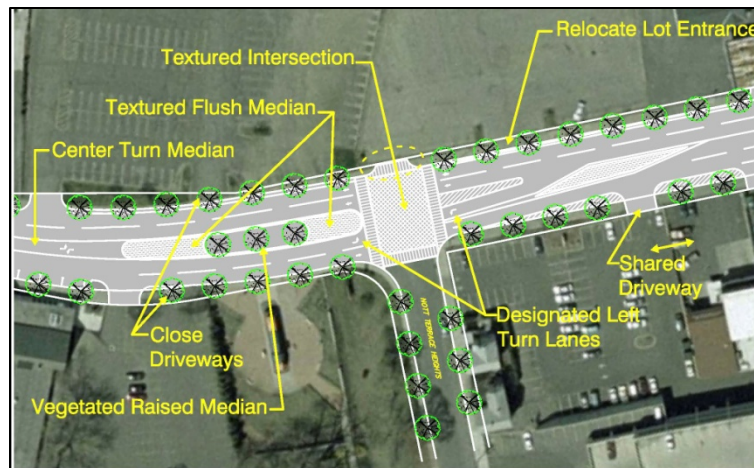


# NOTT TERRACE CONCEPTUAL PLAN



Nott Terrace design concept in the City of Schenectady, New York.

**Total Study Cost:** \$50,000 consultant effort

**Description:** Nott Terrace is a street running from downtown Schenectady, past Vale Park to Union Street. The corridor is recognized as a major vehicle route and the street is currently dominated by excessive pavement widths, narrow sidewalks, marginal street lighting, parking lots, and strip development. The purpose of this study is to develop conceptual streetscape improvements that emphasize the role the corridor plays as an edge to the downtown, and to create a more attractive environment and sense of place for pedestrians. Neighborhood residents were given a number of opportunities to provide input through public workshops and through the creation of a Design Advisory Committee consisting of local officials, business owners, and residents.

The study states that the vision, goals, and objectives for Nott Terrace will be achieved by altering the “suburban” character of the roadway. This can be accomplished with the application of four design principles that are specific to the Nott Terrace Corridor:

- Reduce the large scale of the roadway by reducing the number of travel lanes.
- Define Nott Terrace as a place by creating a sense of entry at the north and south ends of the project area.
- Complement and enhance the existing public space.
- Improve existing and future pedestrian linkages with surrounding neighborhoods and downtown by improving key intersections.

This study was completed in March 2004.

To view the final report, visit <http://www.cdtcmpo.org/linkage/nottterrace.pdf>.

**Sponsors:** CDTC and City of Schenectady

**Consultant:** Clough, Harbour & Associates LLP