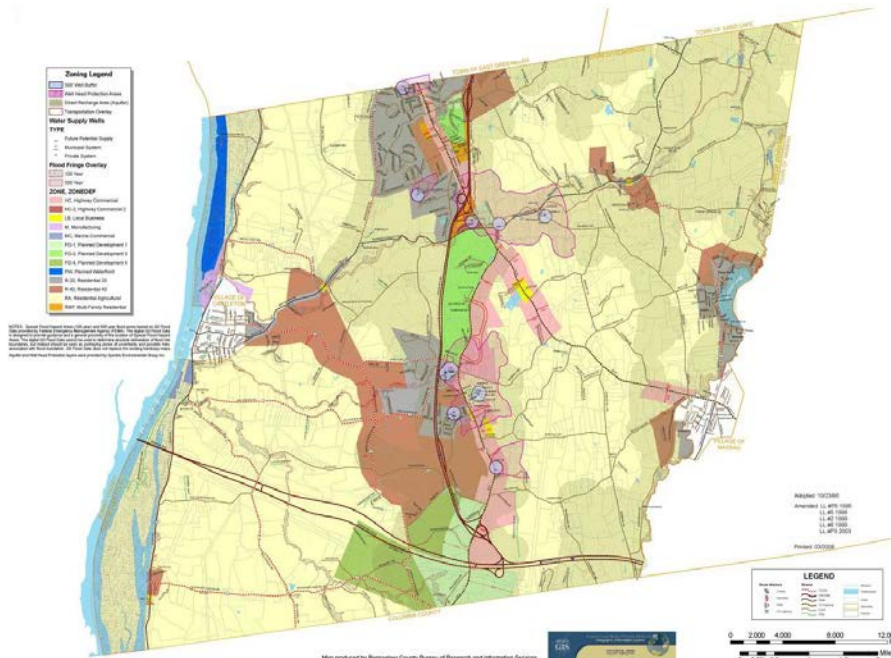


SCHODACK TOWN CENTER PLAN



Existing Zoning Districts, Town of Schodack

Total Study Cost: \$50,000 consultant effort

Description: The town of Schodack is served by three interstate interchanges, and is generally identified by the land use surrounding each interchange rather than by an overall vision. The Schodack Town Center Plan will build upon the Towns' *Comprehensive Plan* and *Route 9 Corridor Development Plan*, both of which called for creating a publicly supported town center plan. The Plan is envisioned to include a balance of commercial, residential, civic, cultural, and recreational uses with a well-designed transportation system that is safe and walkable. The Town Center study area is located along US 9 & 20 from the East Greenbush Town Line to just west of I-90. This initiative will support the town's efforts to create a clear, consensus based plan to create a town center that is rooted in public involvement and supported by proper analysis.

This study was initiated in September 2012.

Sponsors: CDTC and the Town of Schodack

Consultant: The Laberge Group, LLC