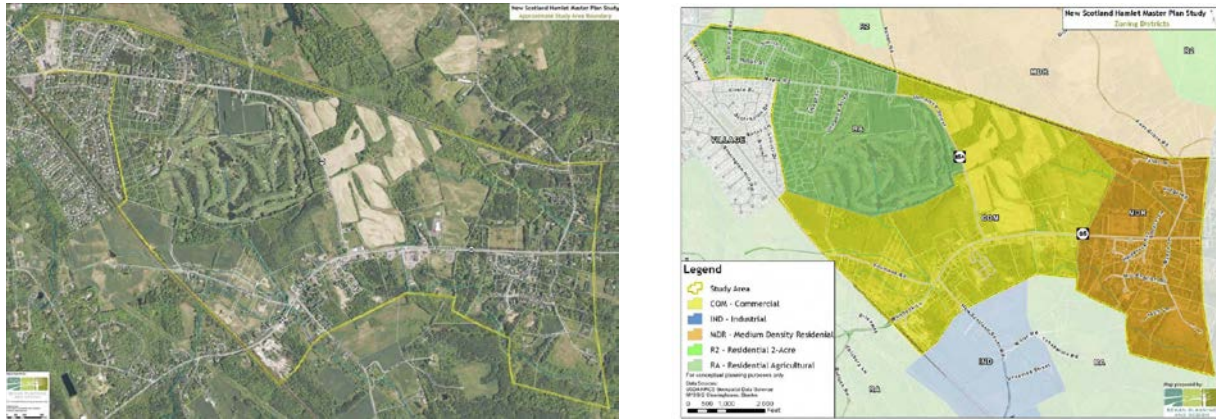


# NEW SCOTLAND HAMLET ZONING REFINEMENTS AND SITE DESIGN GUIDELINES



Proposed study area for the New Scotland Hamlet

**Total Study Cost:** \$75,000 (\$70,000 consultant effort plus \$5,000 in CDTC staff technical assistance)

**Description:** CDTC is assisting the Town of New Scotland with a consultant effort to develop zoning refinements and site design guidelines for the Hamlet of New Scotland. This project will implement recommendations in the Master Plan for the Hamlet of New Scotland, a Linkage study completed in 2012. The zoning refinements will strike a balance between the study area's significance as the town's largest commercial zone, the importance of commercial development as a central component of a sustainable tax base, and the community's clear wishes for development in size and character that is in keeping with community character and the highly scenic nature of this area of town. Illustrated design guidelines will accompany the zoning changes to help regulate site design and protect the character of the community.

This project has not yet been initiated.

**Sponsors:** CDTC and the Town of New Scotland

**Consultant:** To be Selected