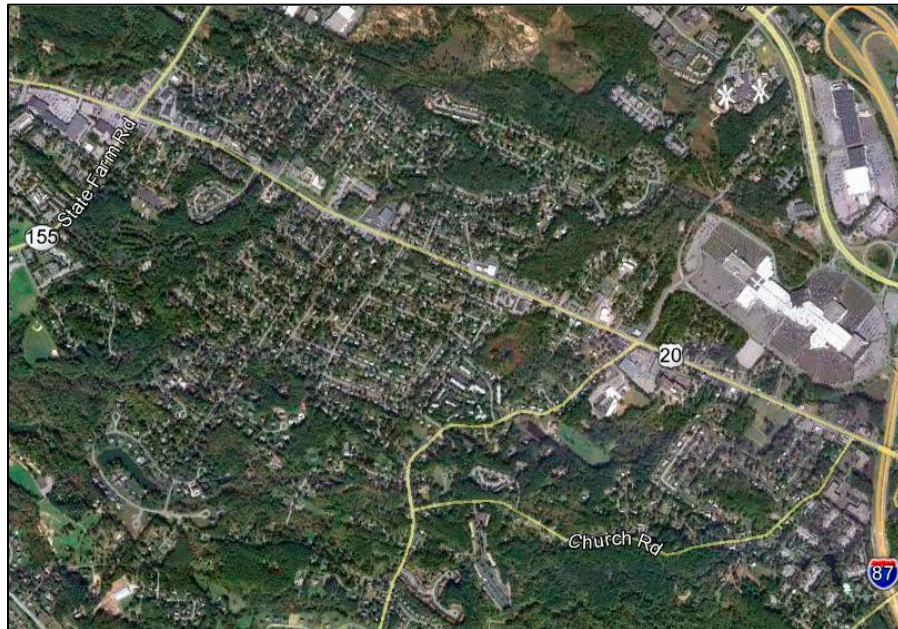


# GUILDERLAND WESTMERE CORRIDOR STUDY



Proposed study area for the Westmere Corridor Study, Guiderland, New York.

**Total Study Cost:** \$74,000 (\$68,000 consultant effort plus \$6,000 in CDTC staff technical assistance)

**Description:** CDTC is assisting the Town of Guiderland with a consultant effort for the creation of a land use and transportation plan for Guiderland's Westmere Corridor (the stretch of Western Avenue between Church Road and New Karner Road). The study was identified as a follow-up effort to the Town of Guiderland's Comprehensive Plan which was adopted in 2001. The study will primarily focus on long term redevelopment opportunities, options for utilizing small and narrow lots, buffer options between residential and commercial property, arterial management guidelines, bicycle and pedestrian improvements and transit amenity improvements along Western Avenue.

This project has not yet been initiated.

**Sponsors:** CDTC and the Town of Guiderland

**Consultant:** To be Selected