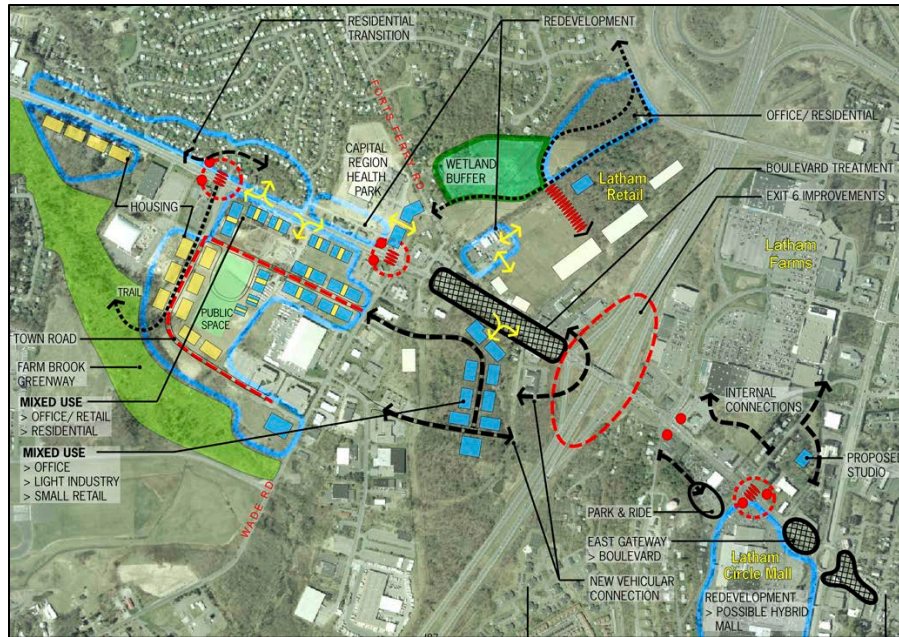


COLONIE ROUTE 7/ROUTE 2 CORRIDOR TRANSPORTATION AND LAND USE STUDY



Wade Road/Exit 6 land use and transportation concepts in the Town of Colonie, New York.

Total Study Cost: \$90,000 (\$80,000 consultant effort plus \$10,000 in CDTC staff technical assistance)

Description: Land use decisions have a direct impact on the operation and integrity of roadways. For the Town of Colonie, land use changes and resulting increases in traffic volumes, have raised issues of traffic operations and safety along the NY 7 / NY 2 corridor. This study provides the framework for future land use, transportation and conservation decisions, where well managed economic growth is balanced with the Town's desire to maintain community character, protect natural resources and provide a sufficient network of multi-modal transportation choices. The goals and objectives of the study are to: 1) Preserve and Manage the Transportation System; 2) Maintain and Improve the Quality of the Natural, Built, and Human Environments (i.e. Quality of Life and Community Character); 3) Recognize the Economic Development Potential and Fiscal Value of this Corridor to the Town; and 4) Plan for All Travel Modes. Two land use scenarios were explored for the corridor and a recommended action plan was developed focusing on four topic areas: 1) Proposed Zoning Amendments; 2) Aesthetic Improvements and Illustrated Design Standards and Guidelines; 3) Proactive Approach to Critical Sites; and 4) Recommended Transportation Actions.

This study was completed in January 2006.

To view the final report, visit <http://www.cdtcmpo.org/linkage/ny7/ny7-2.pdf>.

Sponsors: CDTC and Town of Colonie

Consultant Team: Creighton Manning Engineering in association with the Saratoga Associates